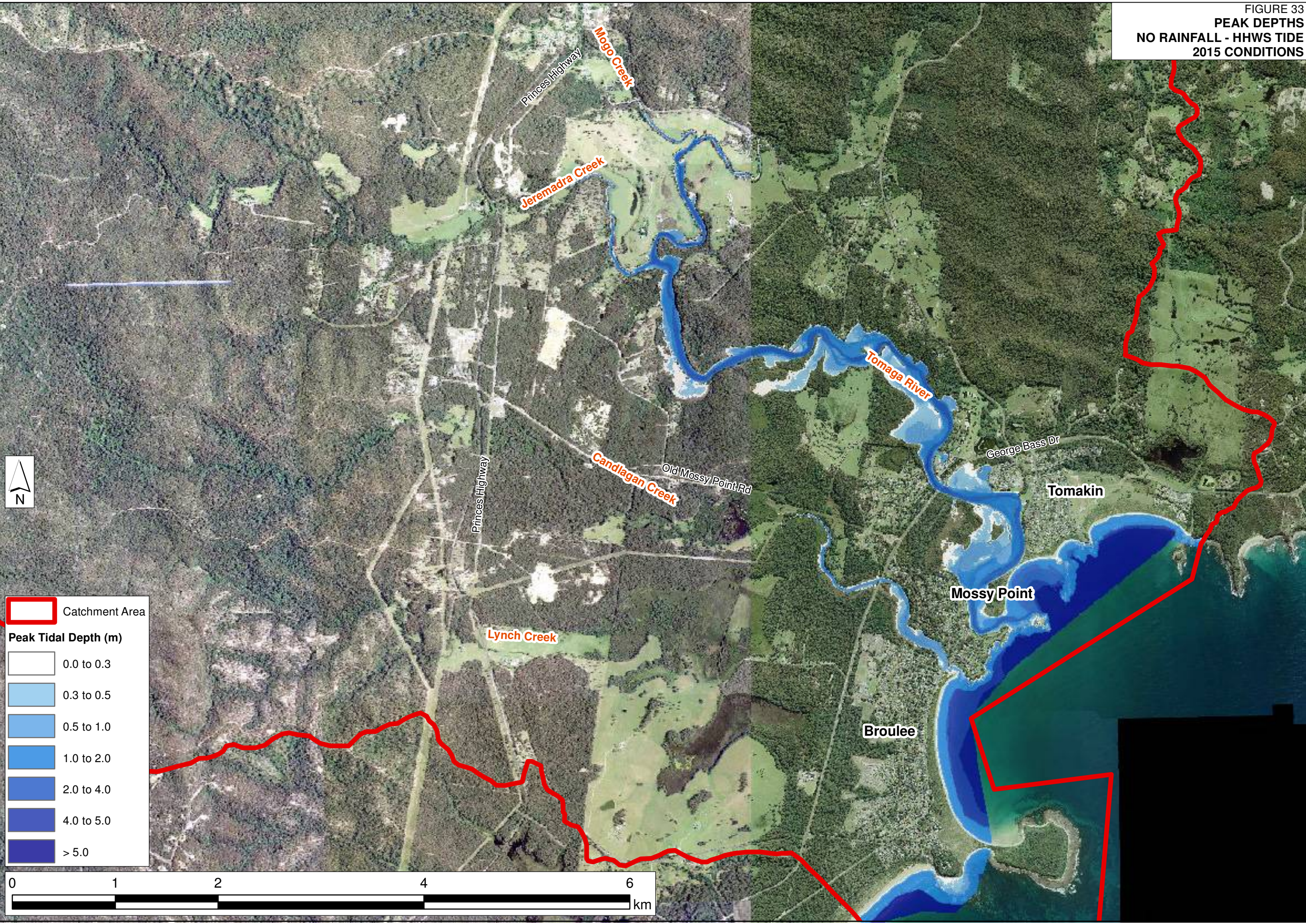










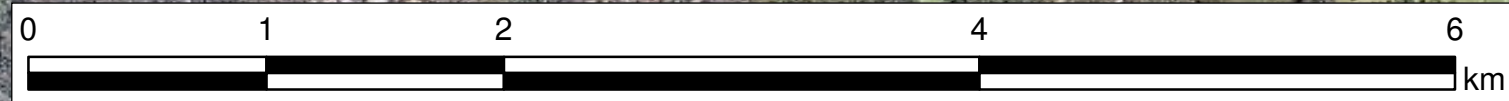
FIGURE 33
PEAK DEPTHS
NO RAINFALL - HHWS TIDE
2015 CONDITIONS



 Catchment Area

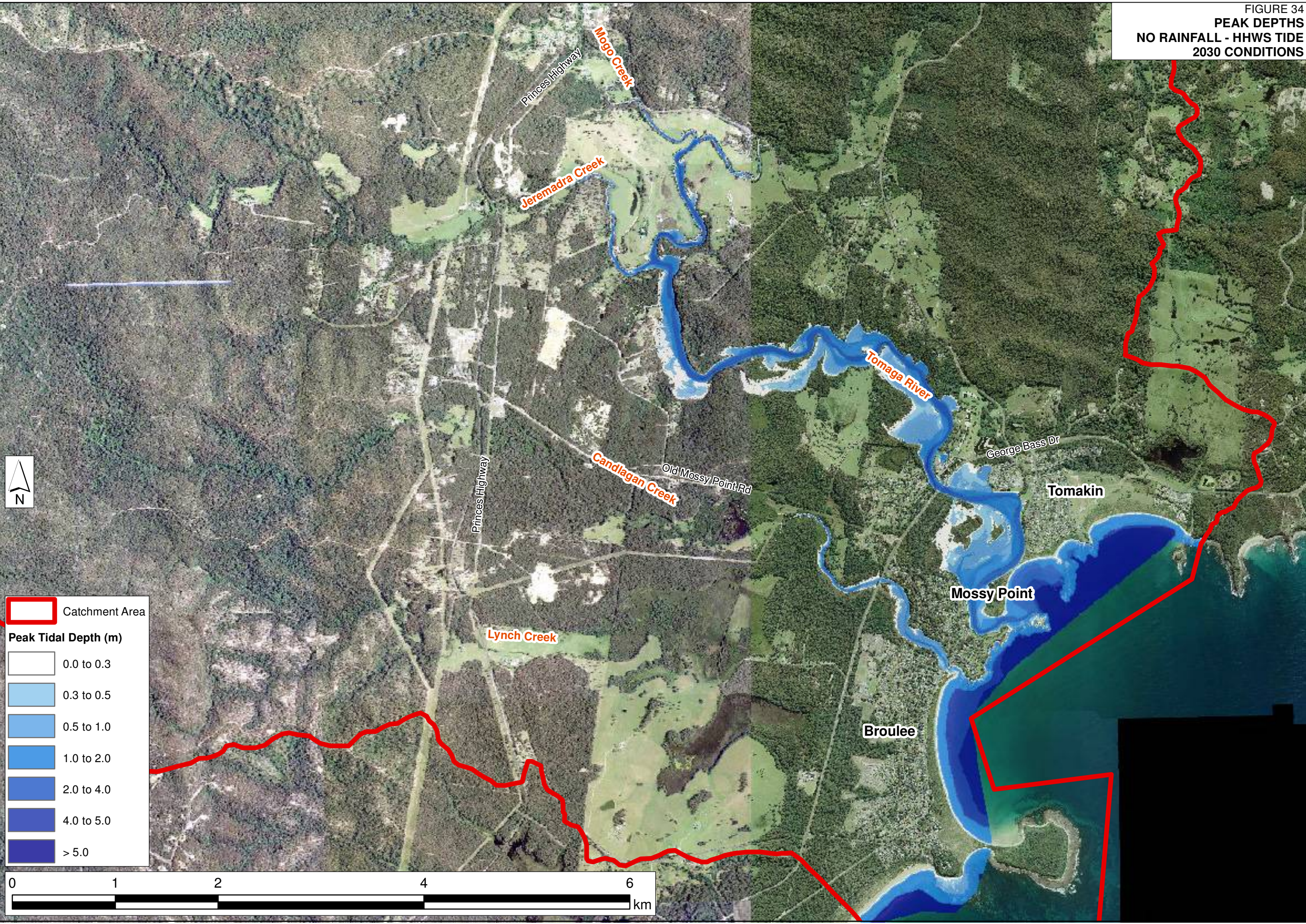
Peak Tidal Depth (m)

	0.0 to 0.3
	0.3 to 0.5
	0.5 to 1.0
	1.0 to 2.0
	2.0 to 4.0
	4.0 to 5.0
	> 5.0




J:\Jobs\114088\ArcView\ArcMaps\Figure33_Depth_SLR2015.mxd








FIGURE 34
PEAK DEPTHS
NO RAINFALL - HHWS TIDE
2030 CONDITIONS



J:\Jobs\114088\ArcView\ArcMaps\Figure34_Depth_SLR2030.mxd

 Catchment Area

Peak Tidal Depth (m)

	0.0 to 0.3
	0.3 to 0.5
	0.5 to 1.0
	1.0 to 2.0
	2.0 to 4.0
	4.0 to 5.0
	> 5.0

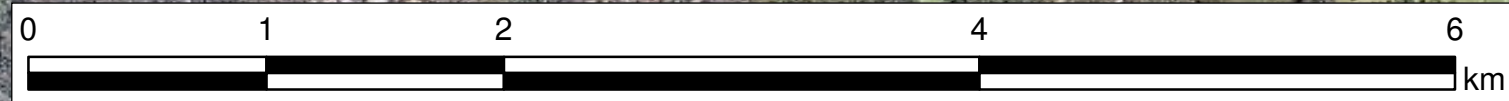
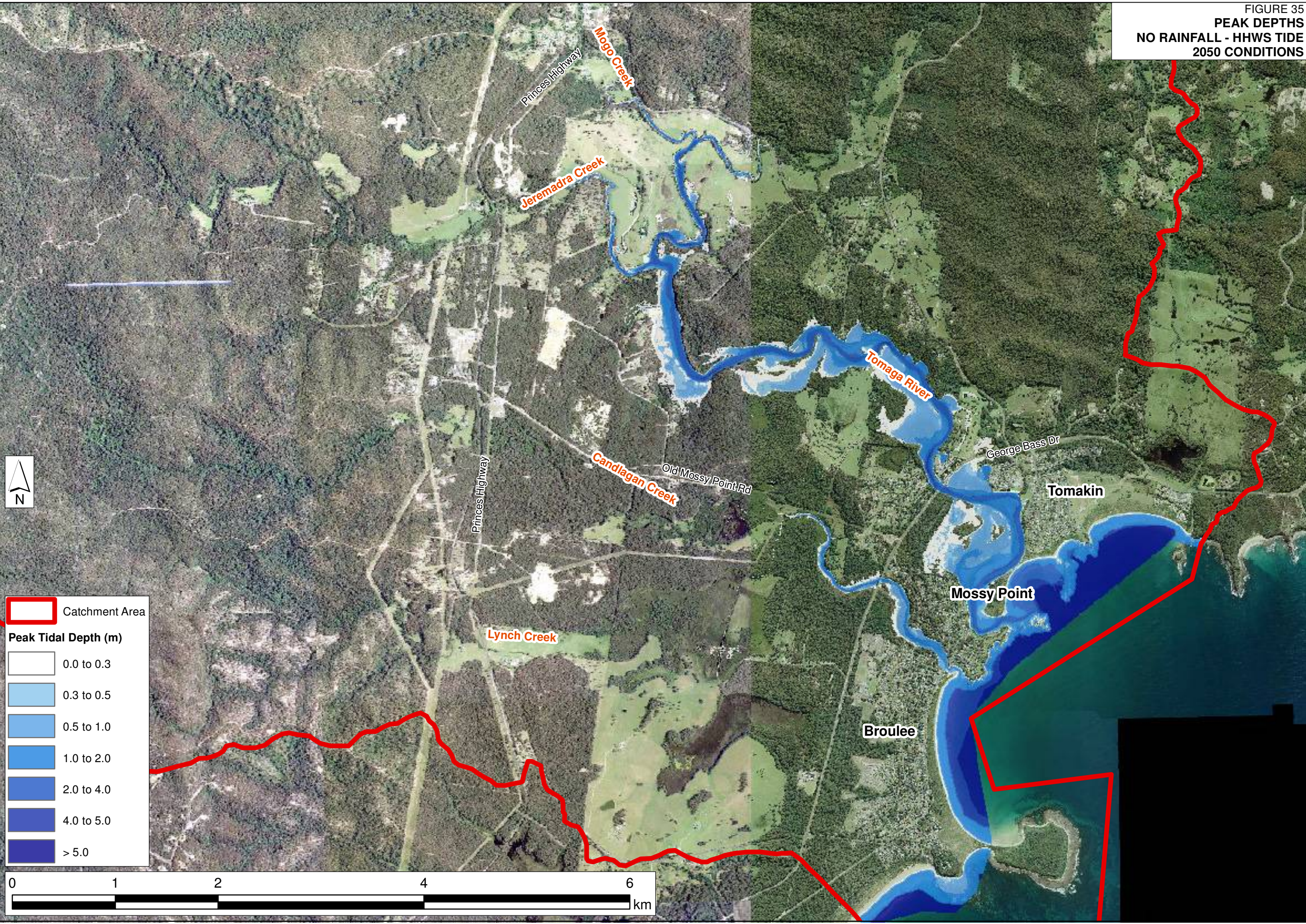










FIGURE 35
PEAK DEPTHS
NO RAINFALL - HHWS TIDE
2050 CONDITIONS



 Catchment Area

Peak Tidal Depth (m)

	0.0 to 0.3
	0.3 to 0.5
	0.5 to 1.0
	1.0 to 2.0
	2.0 to 4.0
	4.0 to 5.0
	> 5.0

J:\Jobs\114088\ArcView\ArcMaps\Figure35_Depth_SLR2050.mxd

FIGURE 36
PEAK DEPTHS
NO RAINFALL - HHWS TIDE
2070 CONDITIONS

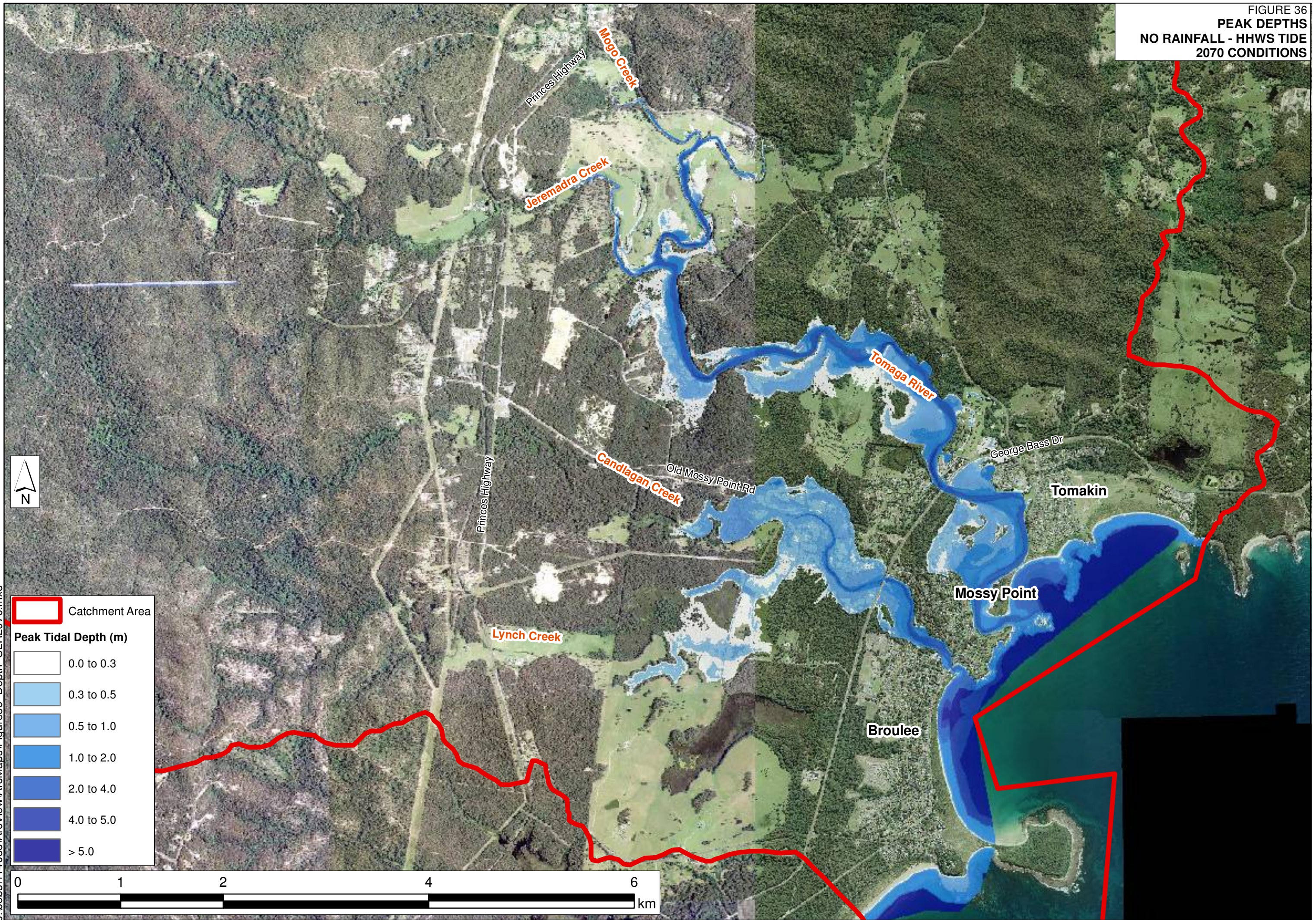
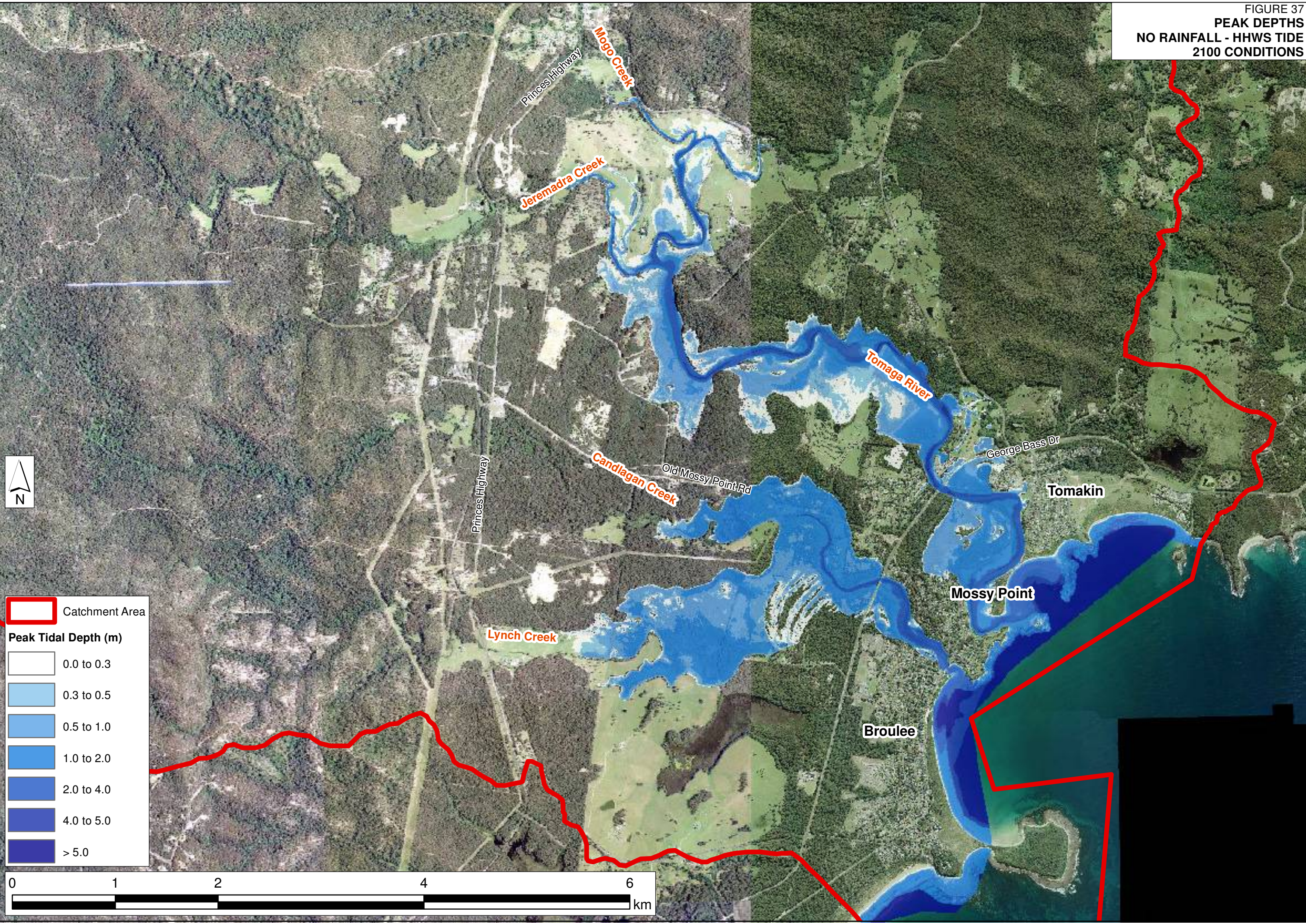










FIGURE 37
PEAK DEPTHS
NO RAINFALL - HHWS TIDE
2100 CONDITIONS



 Catchment Area

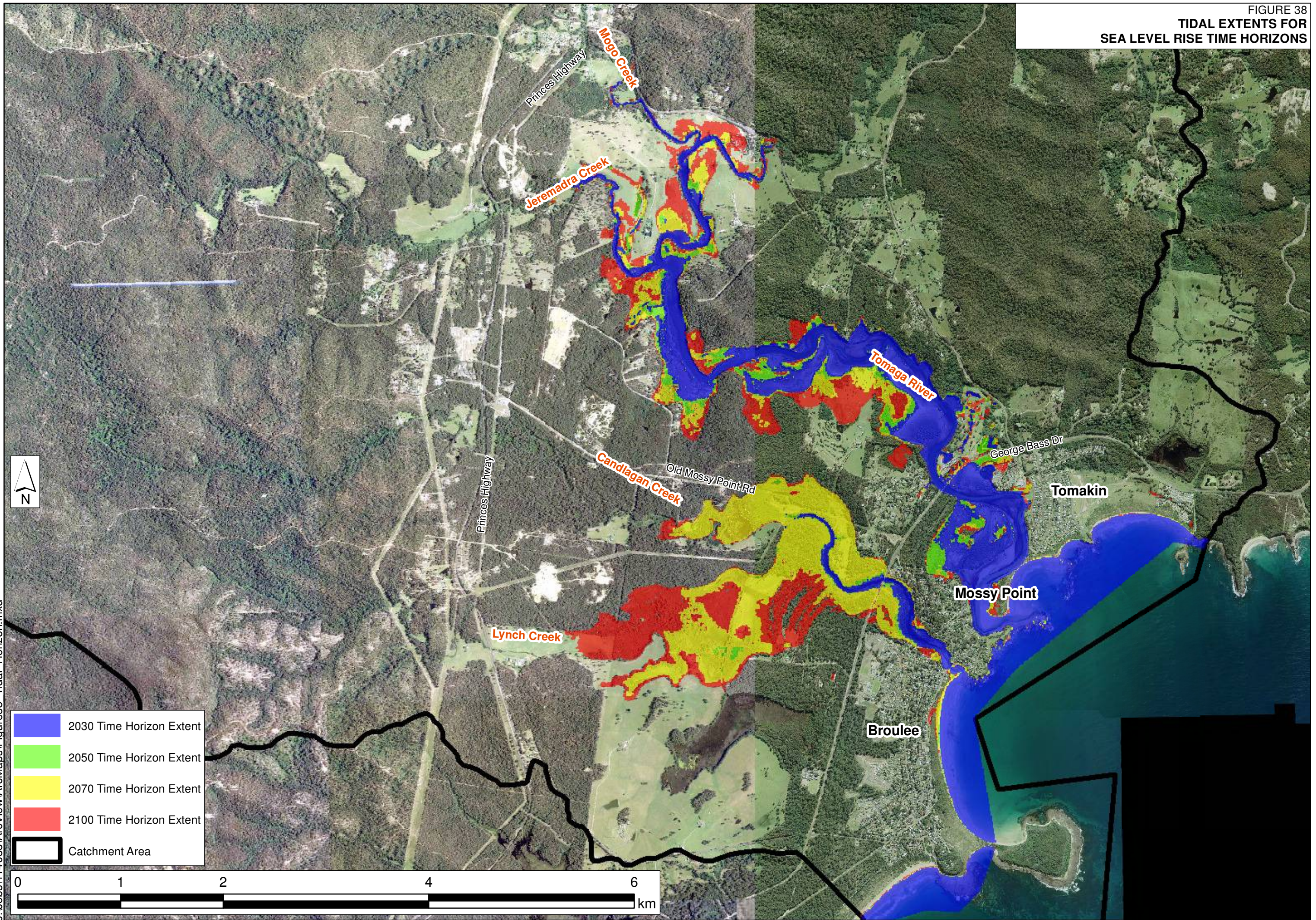
Peak Tidal Depth (m)

	0.0 to 0.3
	0.3 to 0.5
	0.5 to 1.0
	1.0 to 2.0
	2.0 to 4.0
	4.0 to 5.0
	> 5.0



J:\Jobs\114088\ArcView\ArcMaps\Figure37_Depth_SLR2100.mxd

FIGURE 38
TIDAL EXTENTS FOR
SEA LEVEL RISE TIME HORIZONS



J:\Jobs\114088\ArcView\ArcMaps\Figure38_Tidal_Horizon.mxd