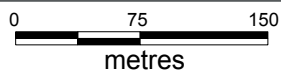




LEGEND

- Maximum Wave Runup Level
- ▨▨▨▨ Areas Overtopped by Wave Runup
- Cadastre
- Water Pipes
- Sewer Pipes

DATE 22/06/2010



COORDINATE SYSTEM
MGA 94 Zone 56

PROJECT NO. 3001805

PROJECT TITLE Eurobodalla Shire Coastal Hazards Scoping Study

FIG NO. 5.28

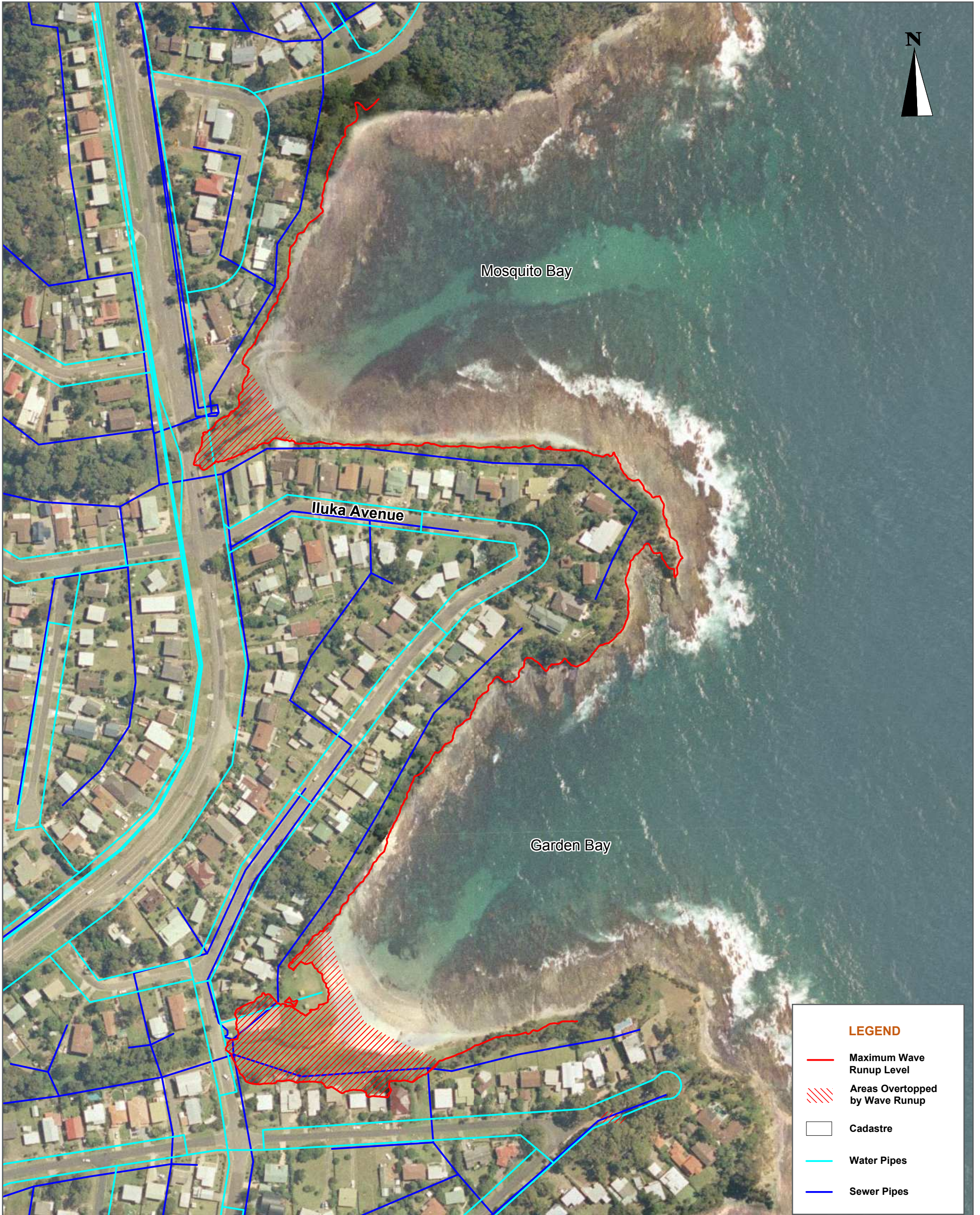
FIGURE TITLE Maximum Wave Runup Level at Denhams and Surf Beach

CREATED BY M. Glatz

LOCATION I:\projects\3001805 - Eurobodalla Coastal Scoping Study\009DATA\GIS\Workspace



© SMEC Australia Pty Ltd 2010.
All Rights Reserved



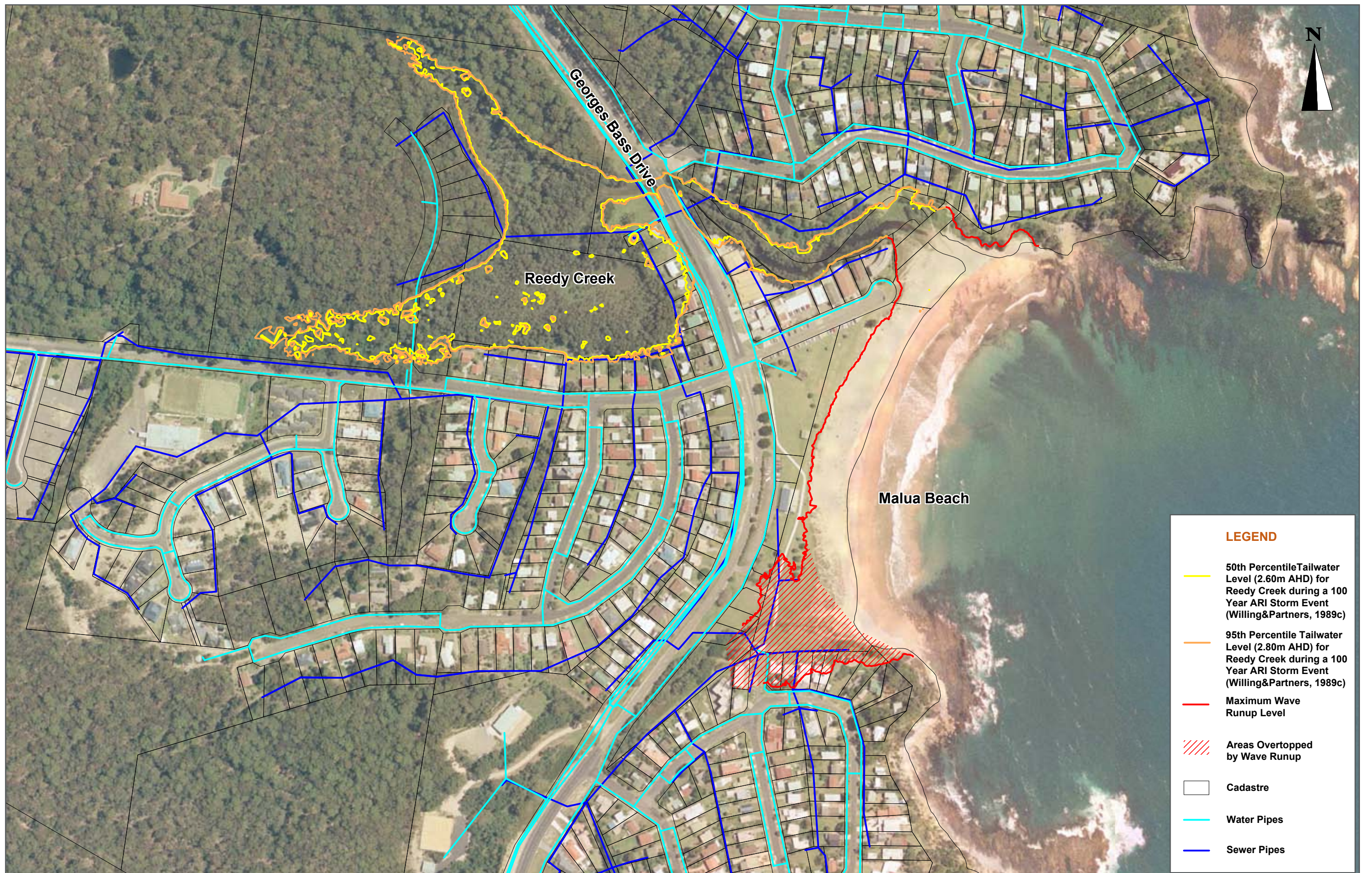
LEGEND

- Maximum Wave Runup Level
- ▨ Areas Overtopped by Wave Runup
- Cadastre
- Water Pipes
- Sewer Pipes

DATE 22/06/2010	0 40 80 metres	COORDINATE SYSTEM MGA 94 Zone 56
PROJECT NO. 3001805	PROJECT TITLE Eurobodalla Shire Coastal Hazards Scoping Study	
FIG NO. 5.29	FIGURE TITLE Maximum Wave Runup Level at Mosquito and Garden Bays	
CREATED BY M. Glatz	LOCATION I:\projects\3001805 - Eurobodalla Coastal Scoping Study\009DATA\GIS\Workspace	



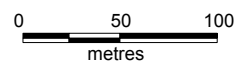
© SMEC Australia Pty Ltd 2010.
All Rights Reserved



LEGEND

- 50th Percentile Tailwater Level (2.60m AHD) for Reedy Creek during a 100 Year ARI Storm Event (Willing&Partners, 1989c)
- 95th Percentile Tailwater Level (2.80m AHD) for Reedy Creek during a 100 Year ARI Storm Event (Willing&Partners, 1989c)
- Maximum Wave Runup Level
- ▨ Areas Overtopped by Wave Runup
- Cadastre
- Water Pipes
- Sewer Pipes

DATE 18/06/2010



COORDINATE SYSTEM
MGA 94 Zone 56

FIG NO. 5.30

FIGURE TITLE Maximum Wave Runup Level at Malua Beach and 100 Year ARI Tailwater Levels at Reedy Creek (Levels from Willing & Partners, 1989c)

PROJECT NO. 3001805

PROJECT TITLE Eurobodalla Shire Coastal Hazards Scoping Study

CREATED BY M. Glatz

LOCATION I:\projects\3001805 - Eurobodalla Coastal Scoping Study\009DATA\GIS\Workspace



© SMEC Australia Pty Ltd 2010. All Rights Reserved

EUROBODALLA SHIRE COUNCIL
Good Government, better living

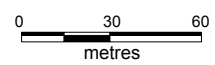


Rosedale Beach

LEGEND

- Maximum Wave Runup Level**
- Areas Overtopped by Wave Runup**
- Cadastre**
- Water Pipes**
- Sewer Pipes**

DATE 22/06/2010



COORDINATE SYSTEM
MGA 94 Zone 56

PROJECT NO. 3001805

PROJECT TITLE Eurobodalla Shire Coastal Hazards Scoping Study

FIG NO. 5.31

FIGURE TITLE Maximum Wave Runup Level at Rosedale Beach

CREATED BY M. Glatz

LOCATION I:\projects\3001805 - Eurobodalla Coastal Scoping Study\009DATA\GIS\Workspace



© SMEC Australia Pty Ltd 2010.
All Rights Reserved







LEGEND

- Maximum Wave Runup Level
- Areas Overtopped by Wave Runup
- Cadastre
- Water Pipes
- Sewer Pipes

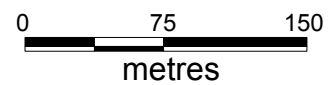
<p>DATE 22/06/2010</p> <p>0 0 25 50 metres</p> <p>COORDINATE SYSTEM MGA 94 Zone 56</p>	<p>FIG NO. 5.32</p> <p>FIGURE TITLE Maximum Wave Runup Level at Guerilla Bay</p>	<div style="display: flex; justify-content: space-between;"> <div style="width: 45%;"> <p>PROJECT NO. 3001805</p> <p>PROJECT TITLE Eurobodalla Shire Coastal Hazards Scoping Study</p> </div> <div style="width: 45%;"> <p>CREATED BY M. Glatz</p> <p>LOCATION I:\projects\3001805 - Eurobodalla Coastal Scoping Study\009DATA\GIS\Workspace</p> </div> </div>
<p>© SMEC Australia Pty Ltd 2010. All Rights Reserved</p>		<div style="display: flex; justify-content: space-between; align-items: center;"> <div style="text-align: center;"> <p>SMEC</p> </div> <div style="text-align: center;"> <p>EUROBODALLA SHIRE COUNCIL <i>Good Government, better living</i></p> </div> </div>



LEGEND

-  **Maximum Wave Runup Level**
-  **Areas Overtopped by Wave Runup**
-  **Cadastre**
-  **Water Pipes**
-  **Sewer Pipes**

DATE 22/06/2010



COORDINATE SYSTEM
MGA 94 Zone 56

FIG NO. 5.33

FIGURE TITLE Maximum Wave Runup Level at Tomakin and Barlings Beach

PROJECT NO. 3001805

PROJECT TITLE Eurobodalla Shire Coastal Hazards Scoping Study

CREATED BY M. Glatz

LOCATION I:\projects\3001805 - Eurobodalla Coastal Scoping Study\009DATA\GIS\Workspace

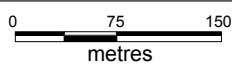


© SMEC Australia Pty Ltd 2010.
All Rights Reserved

EUROBODALLA SHIRE COUNCIL
Good Government, better living



DATE 22/06/2010



COORDINATE SYSTEM
MGA 94 Zone 56

PROJECT NO. 3001805

PROJECT TITLE Eurobodalla Shire Coastal Hazards Scoping Study

FIG NO. 5.34

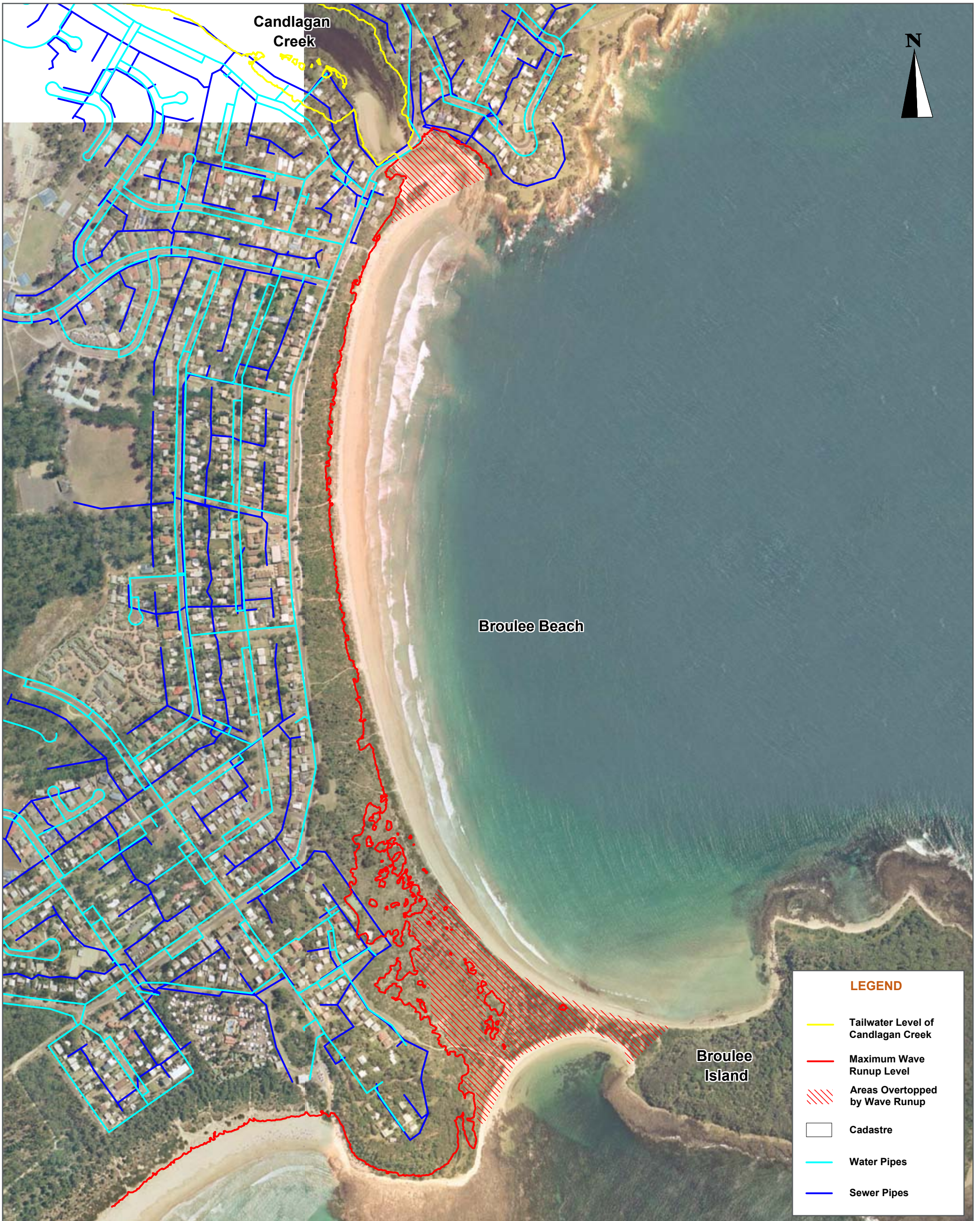
FIGURE TITLE Tailwater and Maximum Wave Runup Level at Tomaga River Entrance

CREATED BY M. Glatz

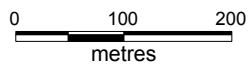
LOCATION I:\projects\3001805 - Eurobodalla Coastal Scoping Study\009DATA\GIS\Workspace



© SMEC Australia Pty Ltd 2010.
All Rights Reserved



DATE 22/06/2010



COORDINATE SYSTEM
MGA 94 Zone 56

PROJECT NO. 3001805

PROJECT TITLE Eurobodalla Shire Coastal Hazards Scoping Study

FIG NO. 5.35

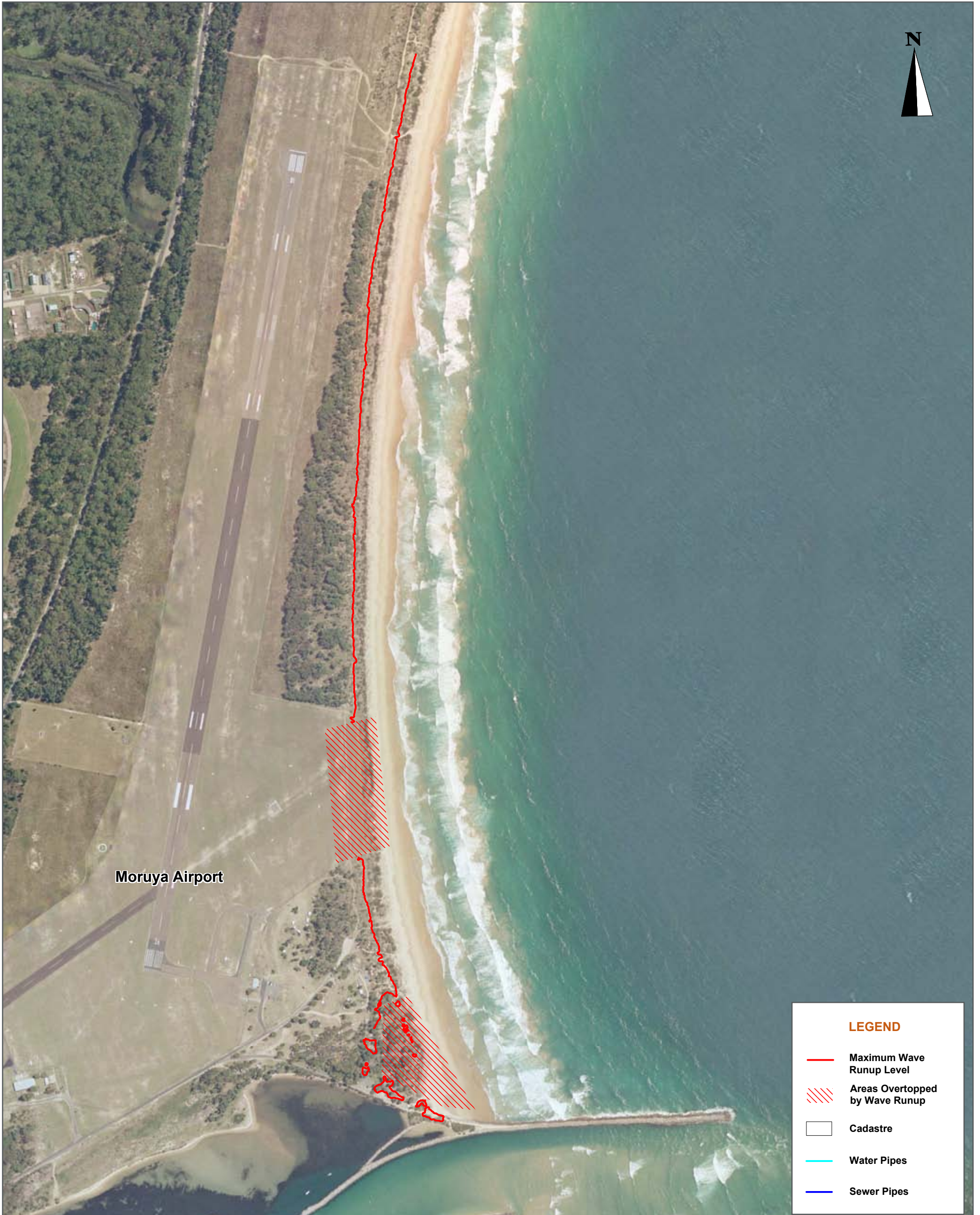
FIGURE TITLE Tailwater and Maximum Wave Runup Level at Broulee

CREATED BY M. Glatz

LOCATION I:\projects\3001805 - Eurobodalla Coastal Scoping Study\009DATA\GIS\Workspace



© SMEC Australia Pty Ltd 2010.
All Rights Reserved



Moruya Airport



LEGEND

- Maximum Wave Runup Level
- ▨ Areas Overtopped by Wave Runup
- Cadastre
- Water Pipes
- Sewer Pipes

DATE 22/06/2010 0 100 200 metres COORDINATE SYSTEM MGA 94 Zone 56

PROJECT NO. 3001805 PROJECT TITLE Eurobodalla Shire Coastal Hazards Scoping Study

FIG NO. 5.36 FIGURE TITLE Maximum Wave Runup Level at Moruya Airport

CREATED BY M. Glatz LOCATION I:\projects\3001805 - Eurobodalla Coastal Scoping Study\009DATA\GIS\Workspace








© SMEC Australia Pty Ltd 2010. All Rights Reserved



Moruya Beach

LEGEND

-  Maximum Wave Runup Level
-  Areas Overtopped by Wave Runup
-  Cadastre
-  Water Pipes
-  Sewer Pipes

DATE 22/06/2010



COORDINATE SYSTEM
MGA 94 Zone 56

PROJECT NO. 3001805 PROJECT TITLE Eurobodalla Shire Coastal Hazards Scoping Study

FIG NO. 5.37 FIGURE TITLE Maximum Wave Runup Level at Moruya Beach

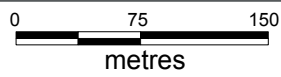
CREATED BY M. Glatz LOCATION I:\projects\3001805 - Eurobodalla Coastal Scoping Study\009DATA\GIS\Workspace



© SMEC Australia Pty Ltd 2010.
All Rights Reserved



DATE 22/06/2010



COORDINATE SYSTEM
MGA 94 Zone 56

PROJECT NO. 3001805

PROJECT TITLE Eurobodalla Shire Coastal Hazards Scoping Study

FIG NO. 5.38

FIGURE TITLE Tailwater and Maximum Wave Runup Levels at Congo

CREATED BY M. Glatz

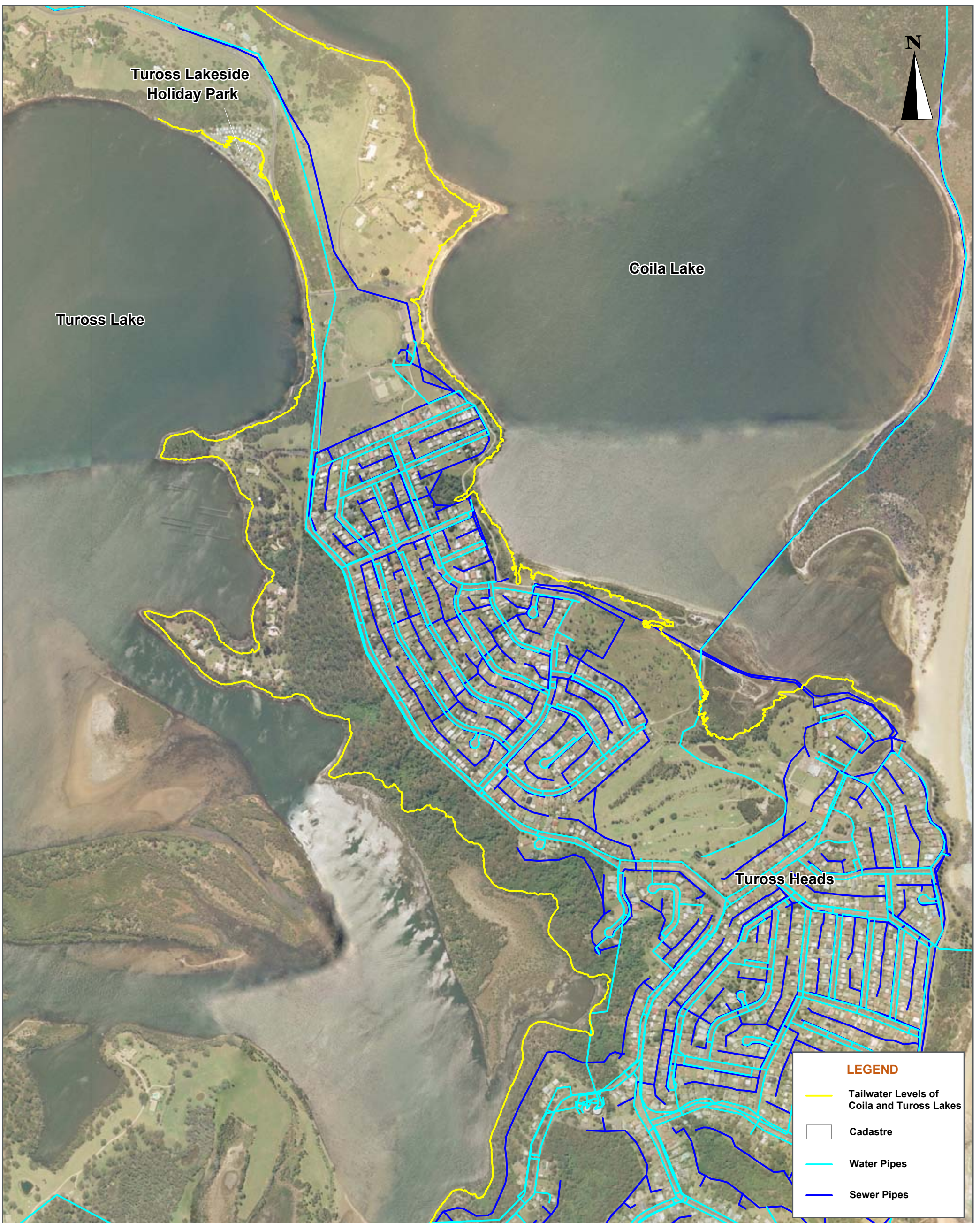
LOCATION I:\projects\3001805 - Eurobodalla Coastal Scoping Study\009DATA\GIS\Workspace

LEGEND

- Tailwater Level of Congo Creek
- Maximum Wave Runup Level
- Areas Overtopped by Wave Runup
- Cadastre
- Water Pipes
- Sewer Pipes



© SMEC Australia Pty Ltd 2010.
All Rights Reserved



LEGEND

- Tailwater Levels of Coila and Tuross Lakes
- Cadastre
- Water Pipes
- Sewer Pipes

DATE 22/06/2010		COORDINATE SYSTEM MGA 94 Zone 56
PROJECT NO. 3001805	PROJECT TITLE Eurobodalla Shire Coastal Hazards Scoping Study	
FIG NO. 5.39	FIGURE TITLE Tailwater Level at Coila and Tuross Lakes	
CREATED BY M. Glatz	LOCATION I:\projects\3001805 - Eurobodalla Coastal Scoping Study\009DATA\GIS\Workspace	



EUROBODALLA SHIRE COUNCIL
Good Government, better living



© SMEC Australia Pty Ltd 2010.
All Rights Reserved