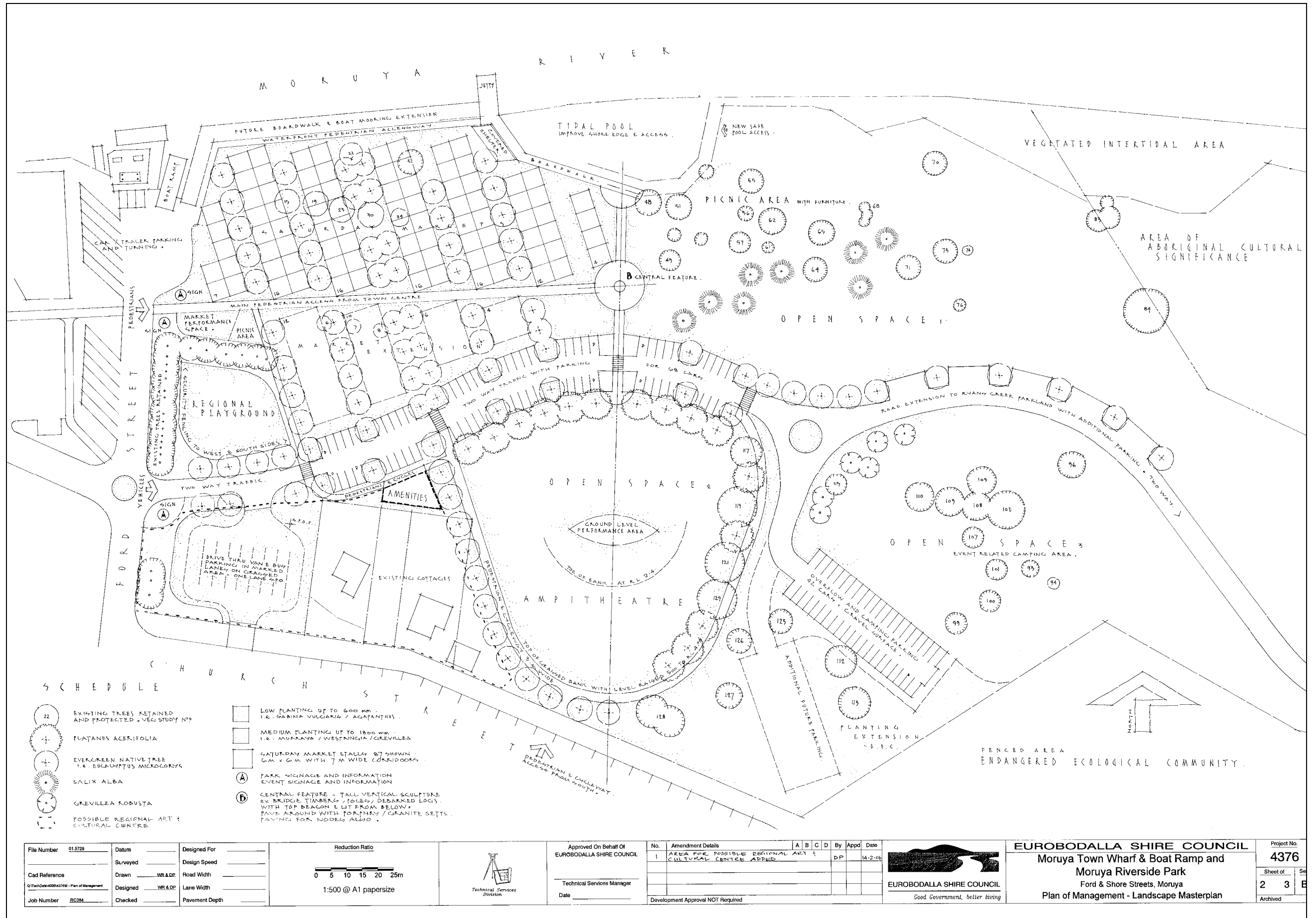


Plan 4: Landscape Masterplan – Moruya Riverside Park

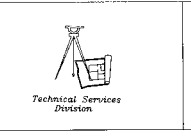


SCHEDULE

- 22 EXISTING TREES RETAINED AND PROTECTED - VEG STUDY N°
- PLATANUS ACERIFOLIA
- EVERGREEN NATIVE TREE I.E. EUCALYPTUS MICROCORYS
- SALIX ALBA
- GREVILLEA ROBUSTA
- POSSIBLE REGIONAL ART / CULTURAL CENTRE
- LOW PLANTING UP TO 600 MM I.E. GABINA VULGARIS / AGAPANTHUS
- MEDIUM PLANTING UP TO 1800 MM I.E. MUMBAJA / WESTINGHIA / GIREVILLA
- SATURDAY MARKET STALLS 87 SHOWN 6M X 6M WITH 7M WIDE CORRIDORS
- PARK SIGNAGE AND INFORMATION EVENT SIGNAGE AND INFORMATION
- CENTRAL FEATURE - TALL VERTICAL SCULPTURE EX BRIDGE TIMBERS / TOLERS / DEBARRED LOGS WITH TOP BEACON & LIT FROM BELOW PAVE AROUND WITH PORPHYRY / GRANITE SETTS PAVING FOR NODES ALSO

File Number	015728	Datum		Designed For	
Cad Reference		Surveyed		Design Speed	
Job Number	BC294	Drawn	WR & DP	Road Width	
		Designed	WR & DP	Lane Width	
		Checked		Pavement Depth	

Reduction Ratio	1:500 @ A1 papersize
Scale	0 5 10 15 20 25m

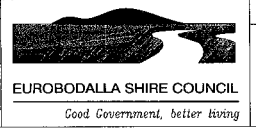


Approved On Behalf Of  
EUROBODALLA SHIRE COUNCIL

Technical Services Manager  
Date

No.	Amendment Details	A	B	C	D	By	Appd	Date
1	AREA FOR POSSIBLE REGIONAL ART / CULTURAL CENTRE ADDED						DP	14-2-06

Development Approval NOT Required



**EUROBODALLA SHIRE COUNCIL**

Moruya Town Wharf & Boat Ramp and Moruya Riverside Park  
Ford & Shore Streets, Moruya  
Plan of Management - Landscape Masterplan

Project No.	4376
Sheet of	2 3 E
Archived	