

Appendix D

Model Output For Current Velocities

AC.2002.j021.R01

Revision 0

20 November 2003

AMOG Consulting
Sea Technology House
Monash Business Park
19 Business Park Drive
Notting Hill Victoria 3168
Australia

ACN *065 475 818*
Telephone: +61 3 9558 9077
Facsimile: +61 3 9558 9880
Email: amogmel@amog.com.au
Internet: www.amog.com.au
AC/028/05

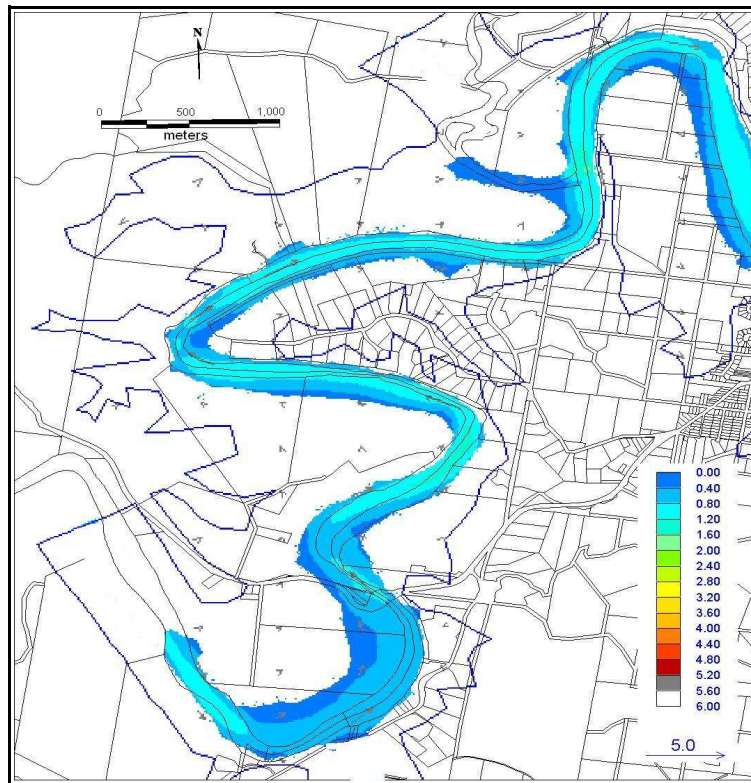


Figure D.1: Upper estuary 1 Year flood velocities (m/S).

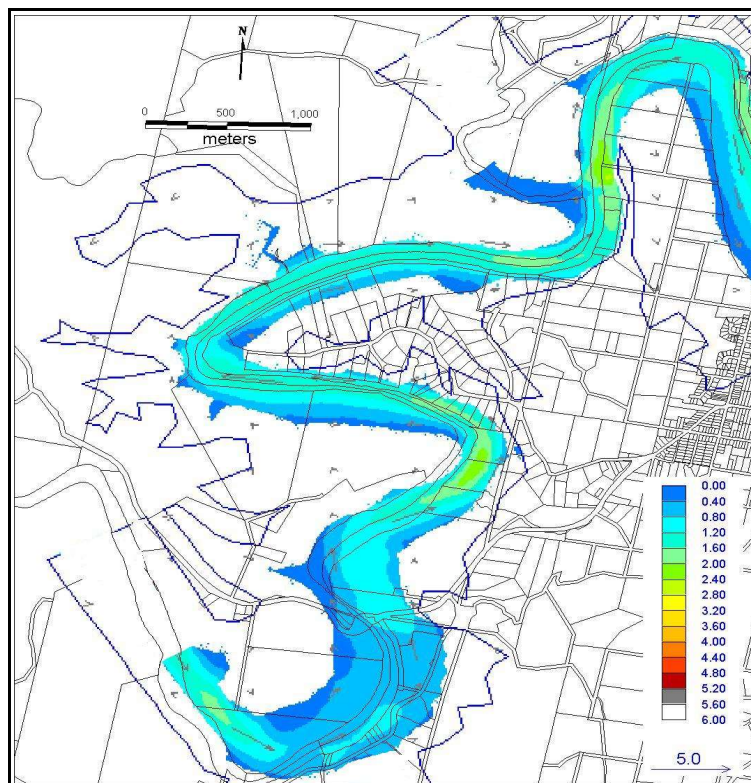


Figure D.2: Upper estuary 5 Year flood velocities (m/S).

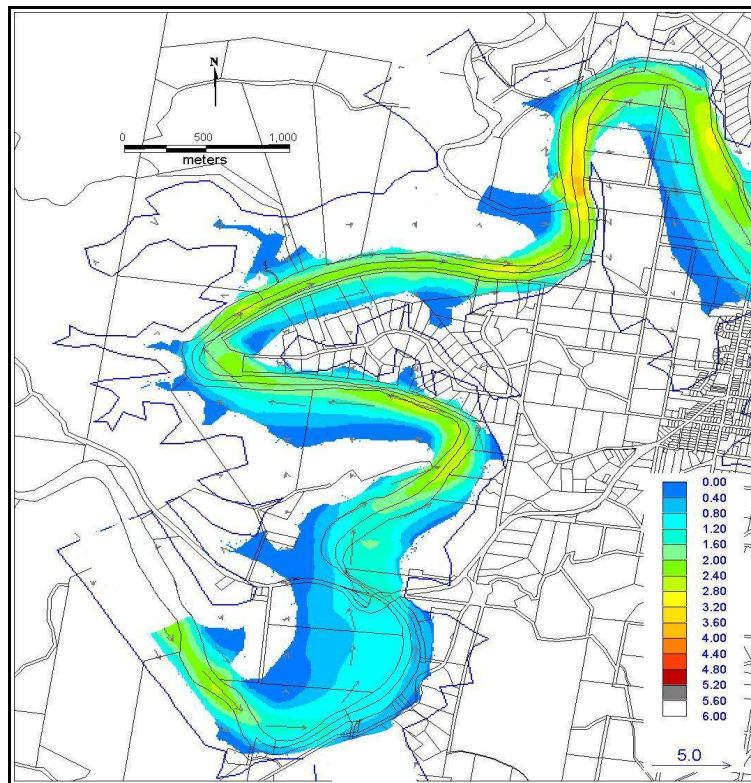


Figure D.3: Upper estuary 20 Year flood velocities (m/S).

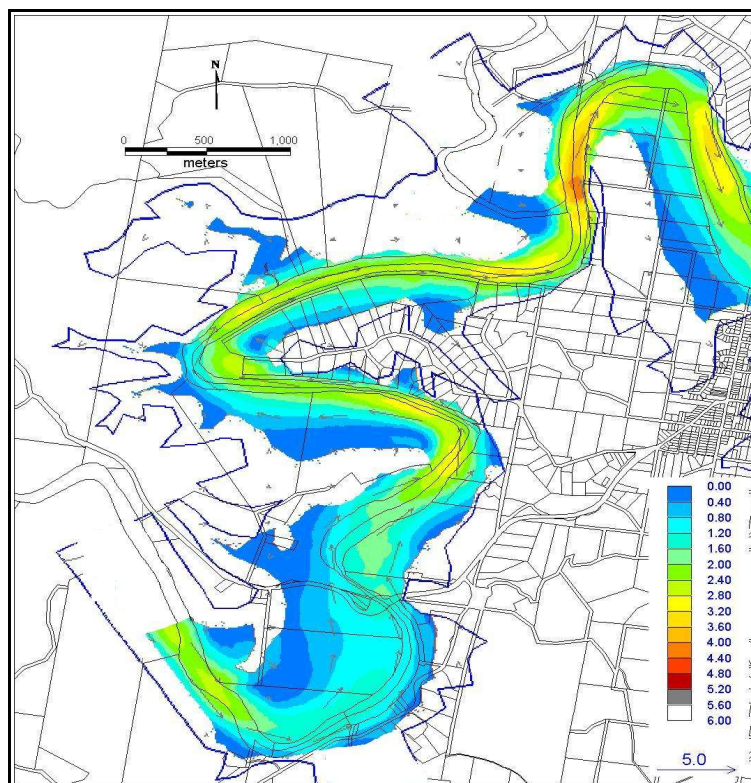


Figure D.4: Upper estuary 50 Year flood velocities (m/S).

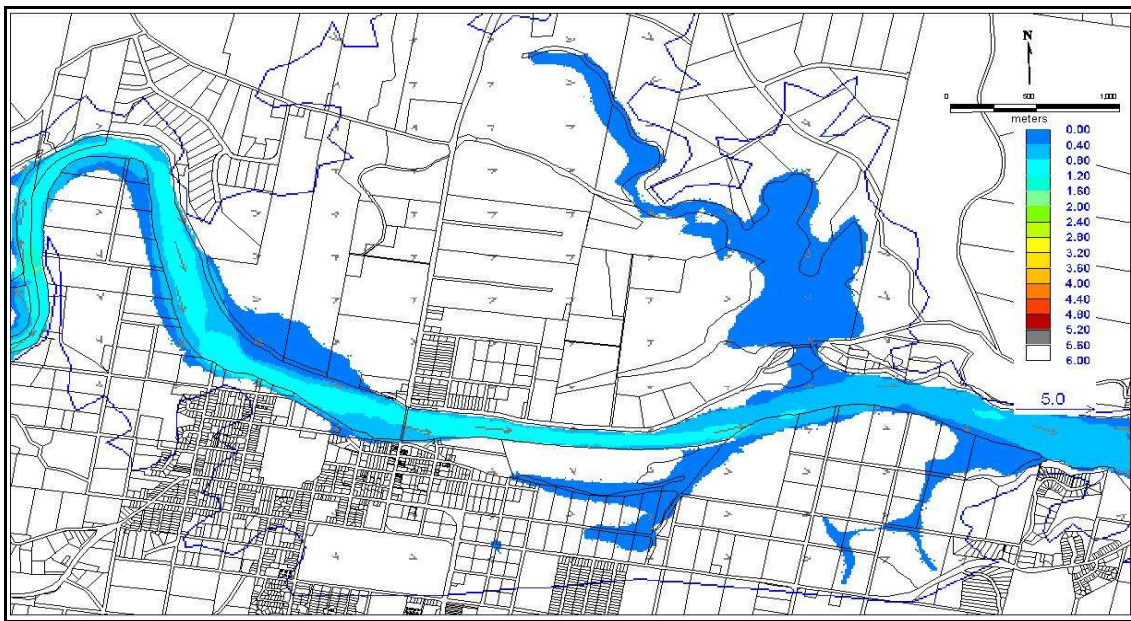


Figure D.5: Mid estuary 1 Year flood velocities (m/S).

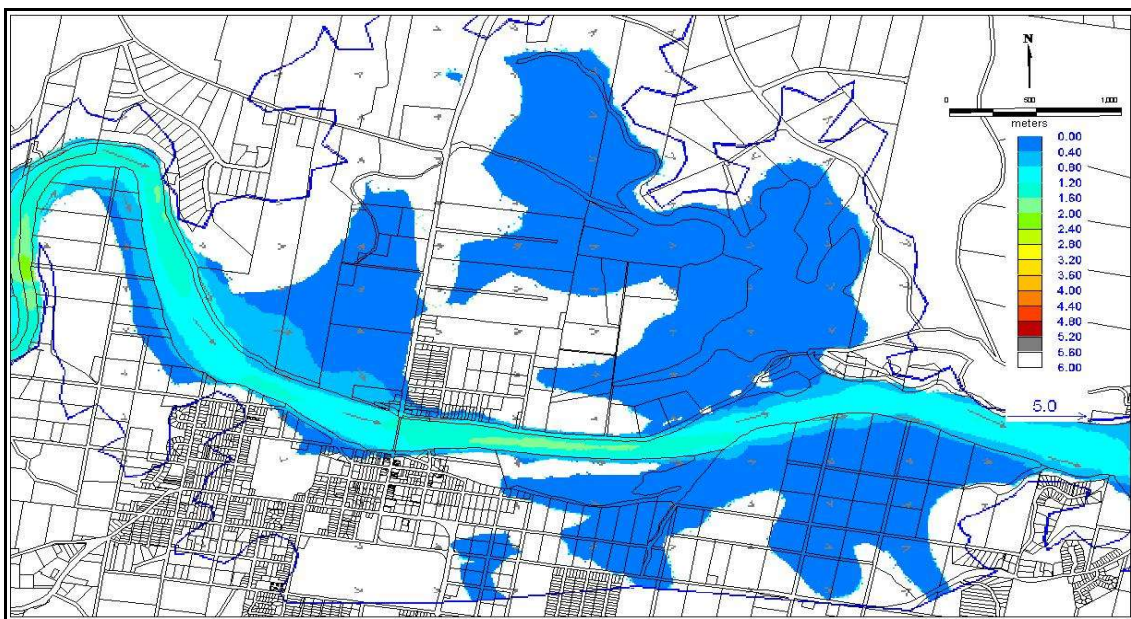


Figure D.6: Mid estuary 5 Year flood velocities (m/S).

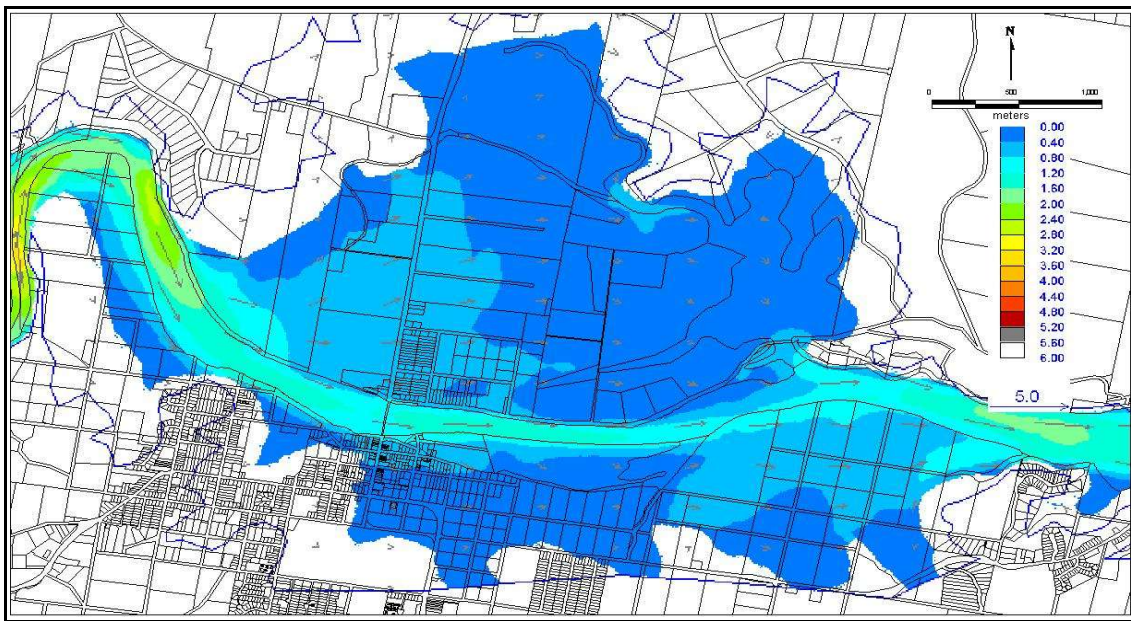


Figure D.7: Mid estuary 20 Year flood velocities (m/S).

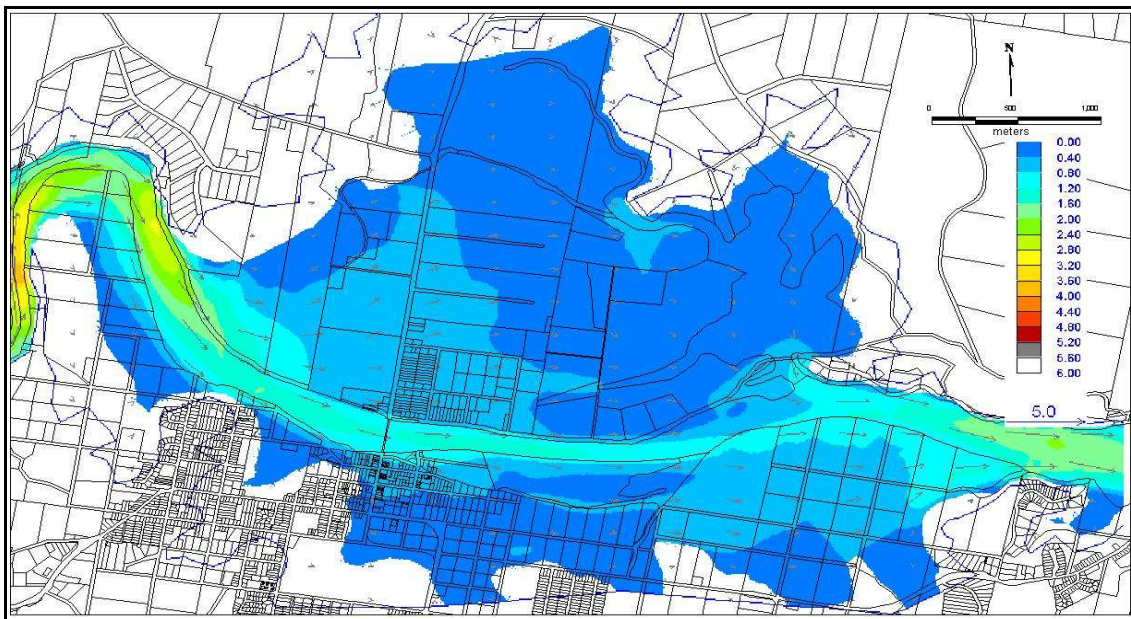


Figure D.8: Mid estuary 50 Year flood velocities (m/S).