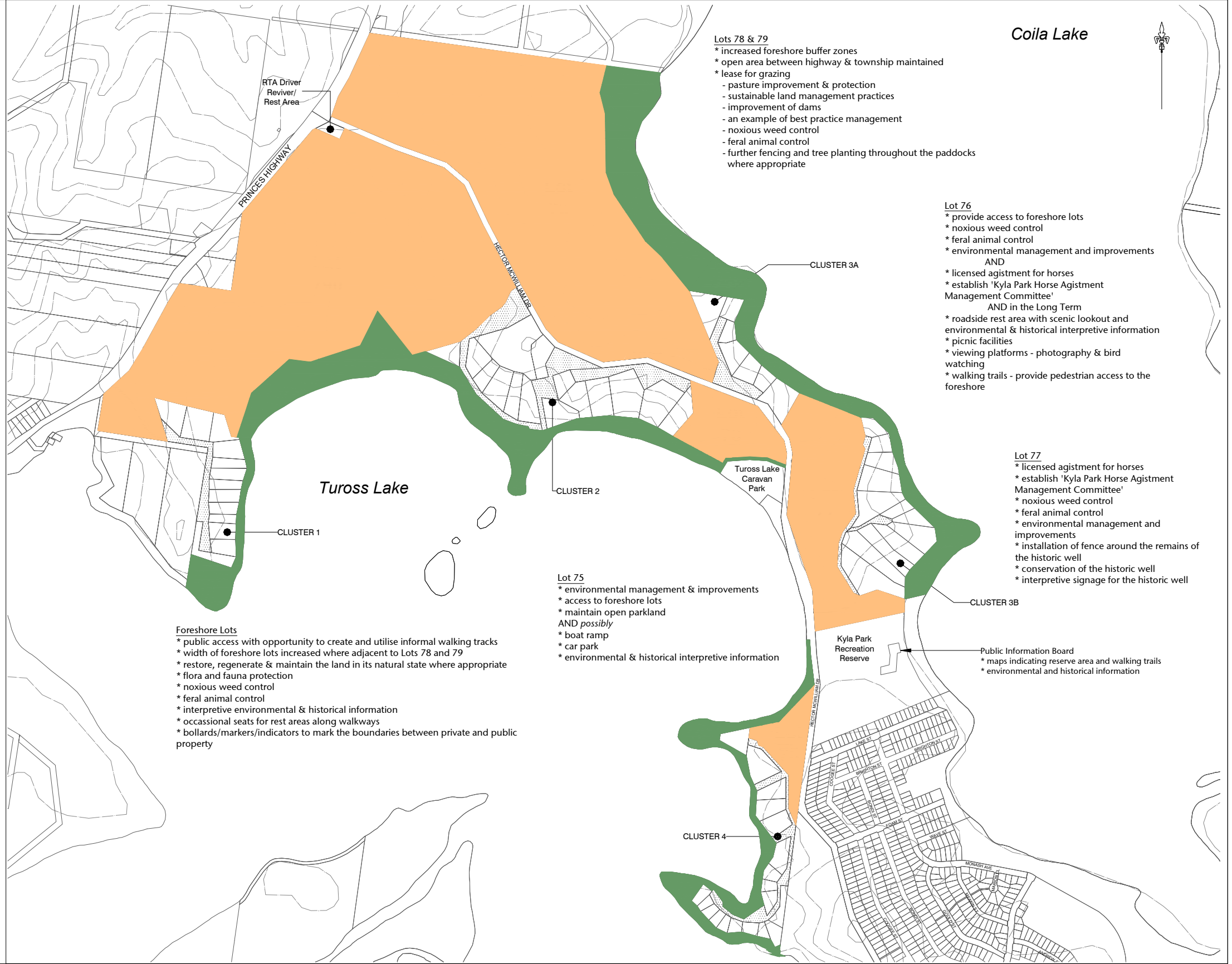


**LEGEND**

- Kyla Park Study Area - Main Lots
- Kyla Park Study Area - Foreshore Lots
- Private Roads
- Easements for vehicular access to Clusters over Community Land (approximate location only)
- 10m contours
- Natural drainage



**Lots 78 & 79**  
 \* increased foreshore buffer zones  
 \* open area between highway & township maintained  
 \* lease for grazing  
 - pasture improvement & protection  
 - sustainable land management practices  
 - improvement of dams  
 - an example of best practice management  
 - noxious weed control  
 - feral animal control  
 - further fencing and tree planting throughout the paddocks where appropriate

**Lot 76**  
 \* provide access to foreshore lots  
 \* noxious weed control  
 \* feral animal control  
 \* environmental management and improvements  
 AND  
 \* licensed agistment for horses  
 \* establish 'Kyla Park Horse Agistment Management Committee'  
 AND in the Long Term  
 \* roadside rest area with scenic lookout and environmental & historical interpretive information  
 \* picnic facilities  
 \* viewing platforms - photography & bird watching  
 \* walking trails - provide pedestrian access to the foreshore

**Lot 77**  
 \* licensed agistment for horses  
 \* establish 'Kyla Park Horse Agistment Management Committee'  
 \* noxious weed control  
 \* feral animal control  
 \* environmental management and improvements  
 \* installation of fence around the remains of the historic well  
 \* conservation of the historic well  
 \* interpretive signage for the historic well



**Lot 75**  
 \* environmental management & improvements  
 \* access to foreshore lots  
 \* maintain open parkland  
 AND possibly  
 \* boat ramp  
 \* car park  
 \* environmental & historical interpretive information

**Foreshore Lots**  
 \* public access with opportunity to create and utilise informal walking tracks  
 \* width of foreshore lots increased where adjacent to Lots 78 and 79  
 \* restore, regenerate & maintain the land in its natural state where appropriate  
 \* flora and fauna protection  
 \* noxious weed control  
 \* feral animal control  
 \* interpretive environmental & historical information  
 \* occasional seats for rest areas along walkways  
 \* bollards/markers/indicators to mark the boundaries between private and public property

**Public Information Board**  
 \* maps indicating reserve area and walking trails  
 \* environmental and historical information

**NOTES**

Cobowra Local Aboriginal Land Council recommend that prior to works requiring ground disturbance, Cobowra Local Aboriginal Land Council be notified of any such works. The Local Aboriginal Land Council may then seek to be further involved in the assessment of the proposed activity by conducting a site assessment on the impact of the activity on any Aboriginal site.

File Number 02.8415 (Plan of Management), 02.6266 (Steering Committee), 02.5887 (Agistment)	Datum Surveyed	Designed For Design Speed	Reduction Ratio 0 100 200 300 400 500m	 Technical Services Division	Approved On Behalf Of EUROBODALLA SHIRE COUNCIL Andrew Parkinson Technical Services Manager Date 9 December 2003	No. Amendment Details A B C D By Appd Date	 EUROBODALLA SHIRE COUNCIL Good Government, better living	EUROBODALLA SHIRE COUNCIL Kyla Park Community Land Hector McWilliam Drive, Tuross Head Landscape Concept Plan November 2003	Project No. 4428 Sheet of 3 Set 3 A Archived
--	-------------------	------------------------------	---	--	--	---	--	---	---

Map 3: Kyla Park Landscape Concept Plan