





engineering | environmental | economics | engagement


Scale : 1:0@A3
Date : 1 December 2022
Revision : C
Created by : LRE
Coordinate System : MGA 94

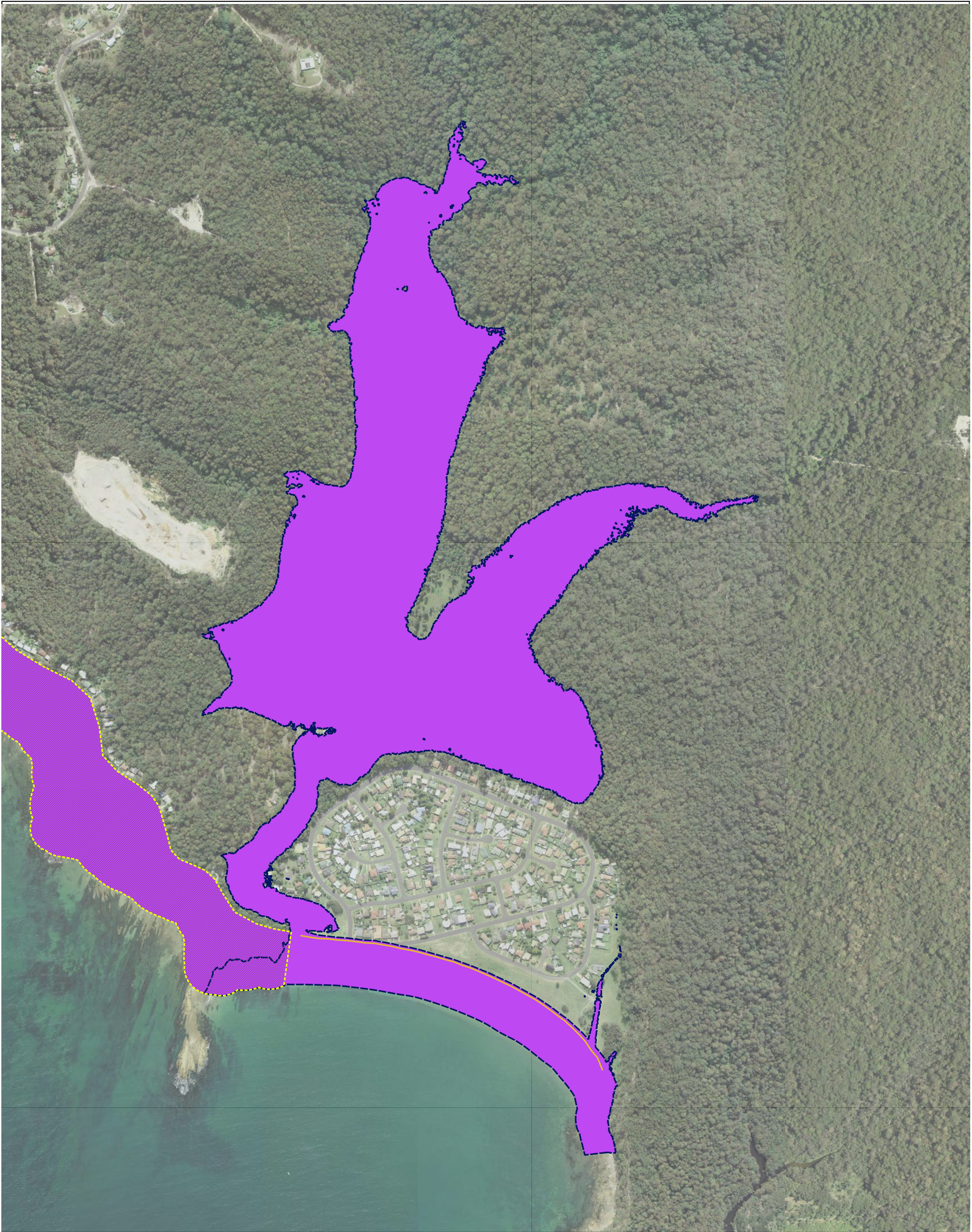
Legend

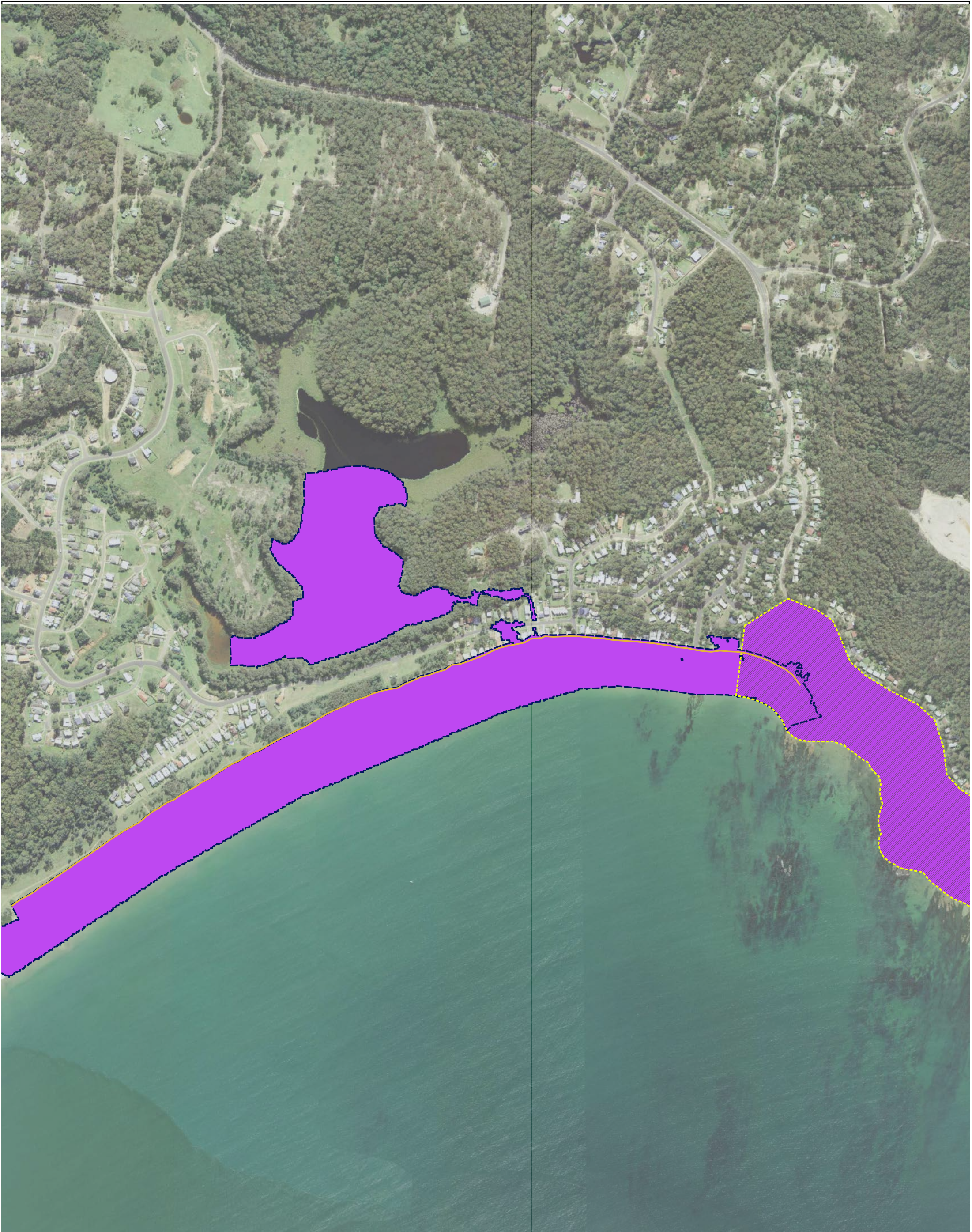
-  Coastal Vulnerability Area
-  2100 Coastal Erosion Risk
-  2100 Coastal Inundation Risk
-  Coastal cliff or slope instability

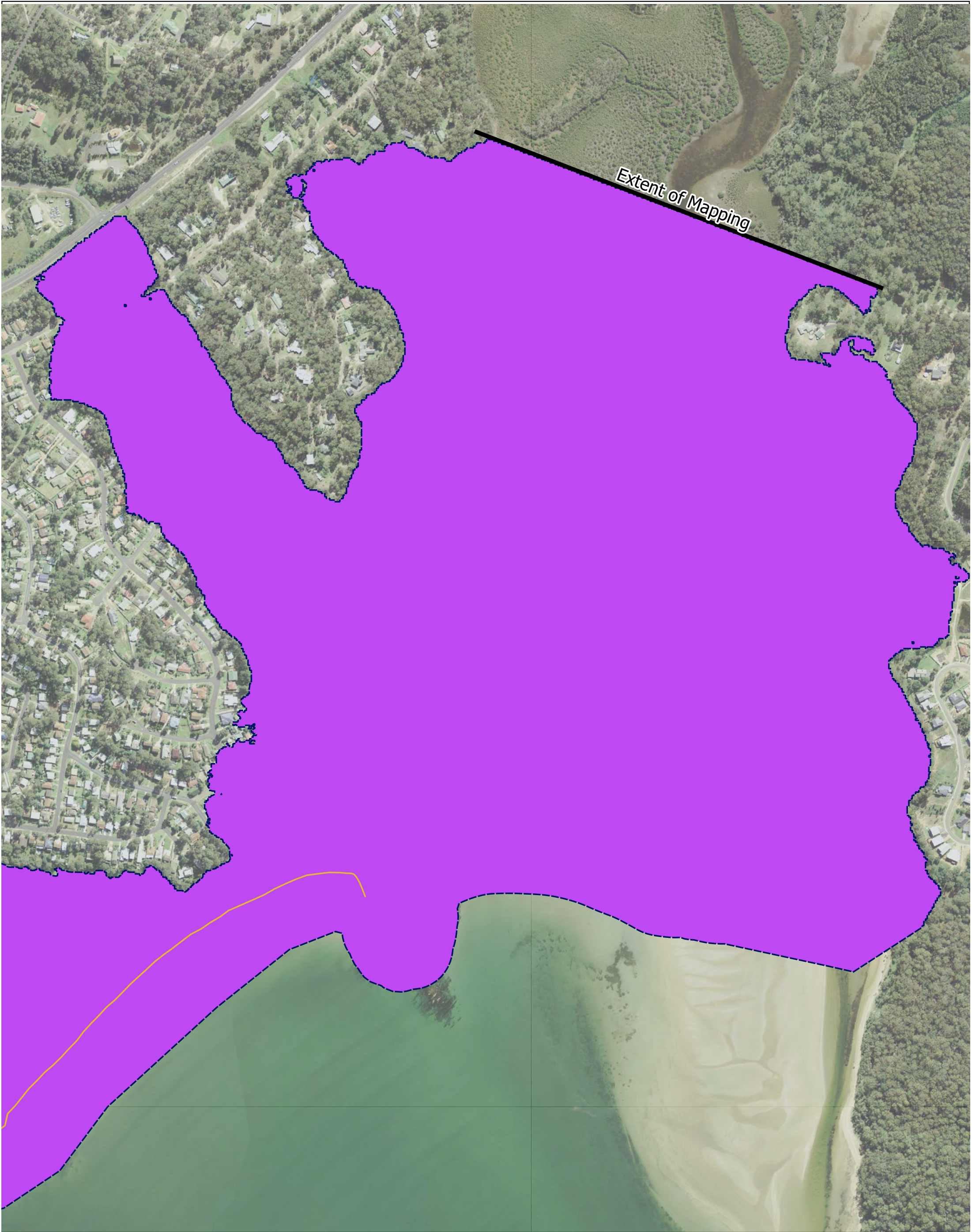
RG-07-01
Coastal Vulnerability Area
South Durras

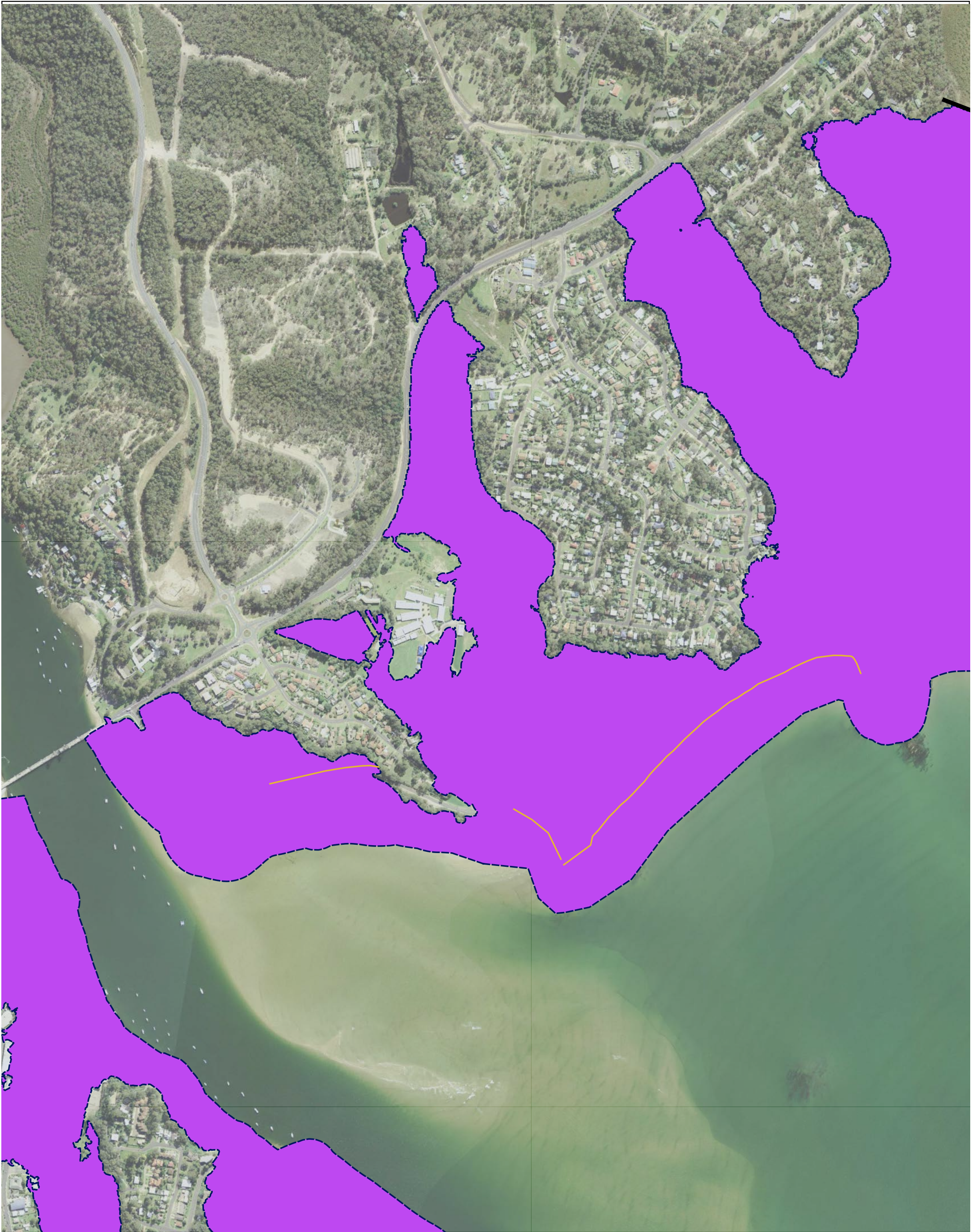
600 0 600 1,200 1,800 m

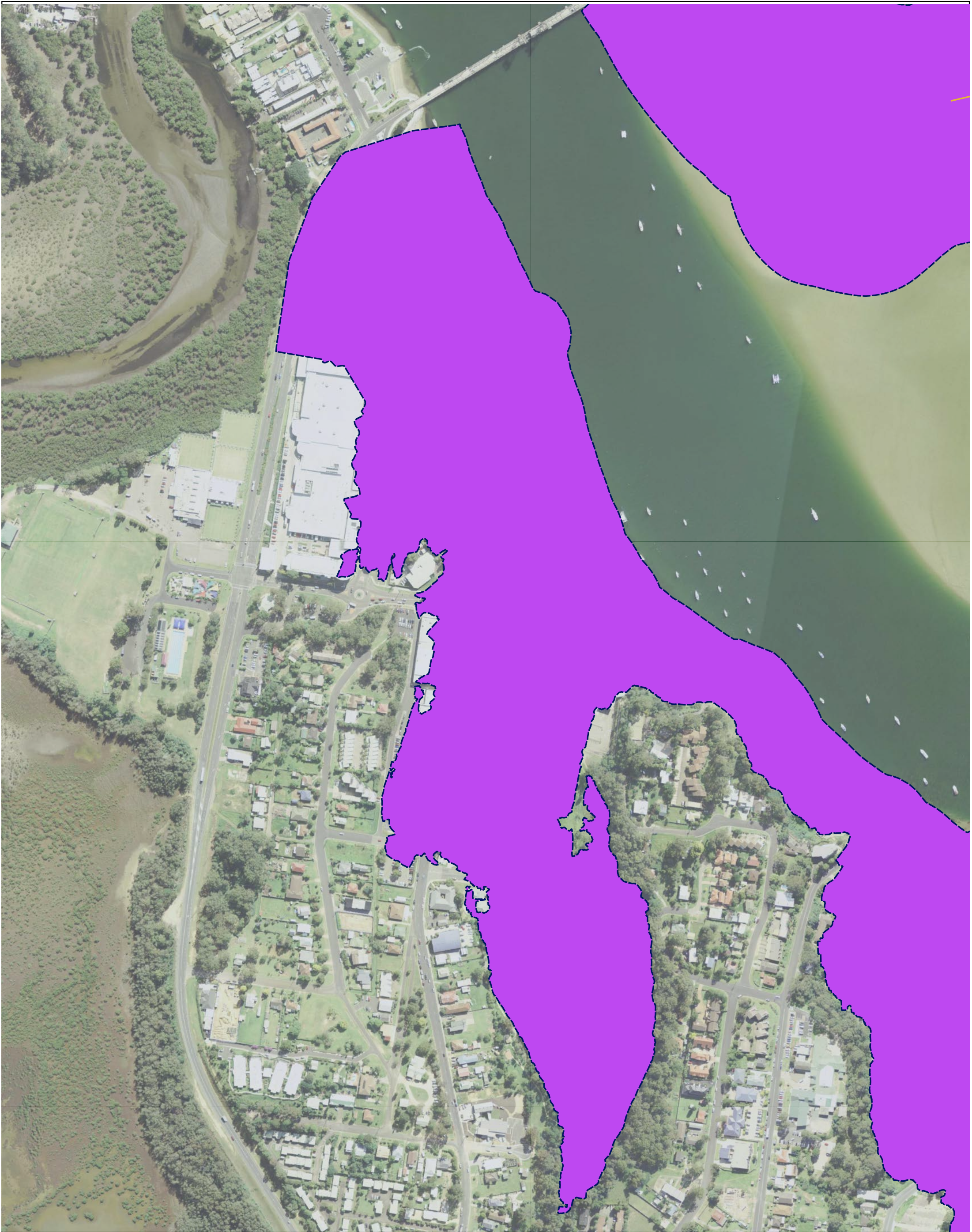


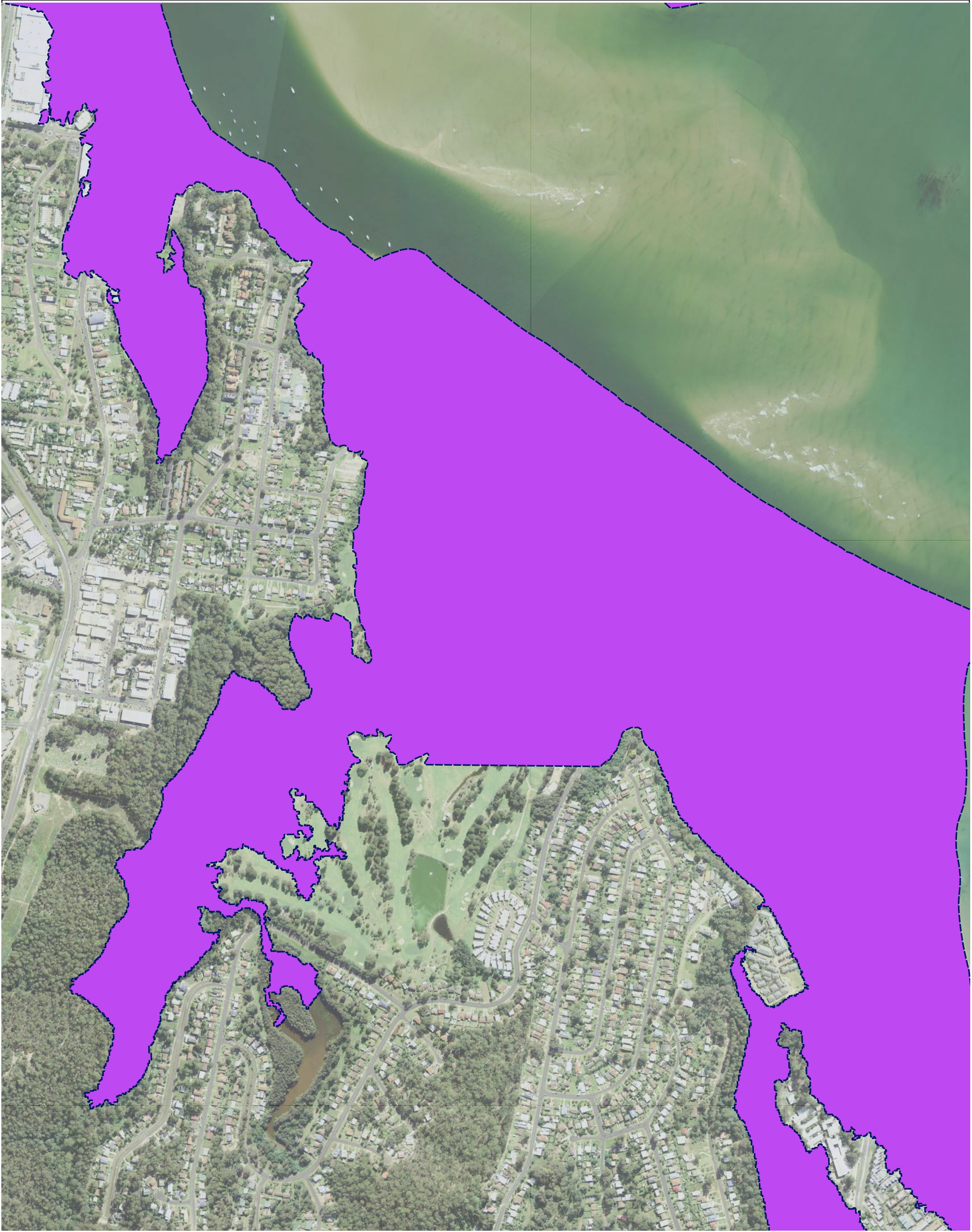


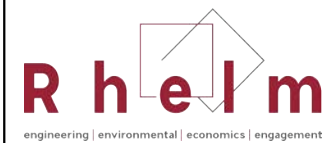

















Scale : 1:7500@A3
Date : 1 December 2022
Revision : C
Created by : LRE
Coordinate System : MGA 94

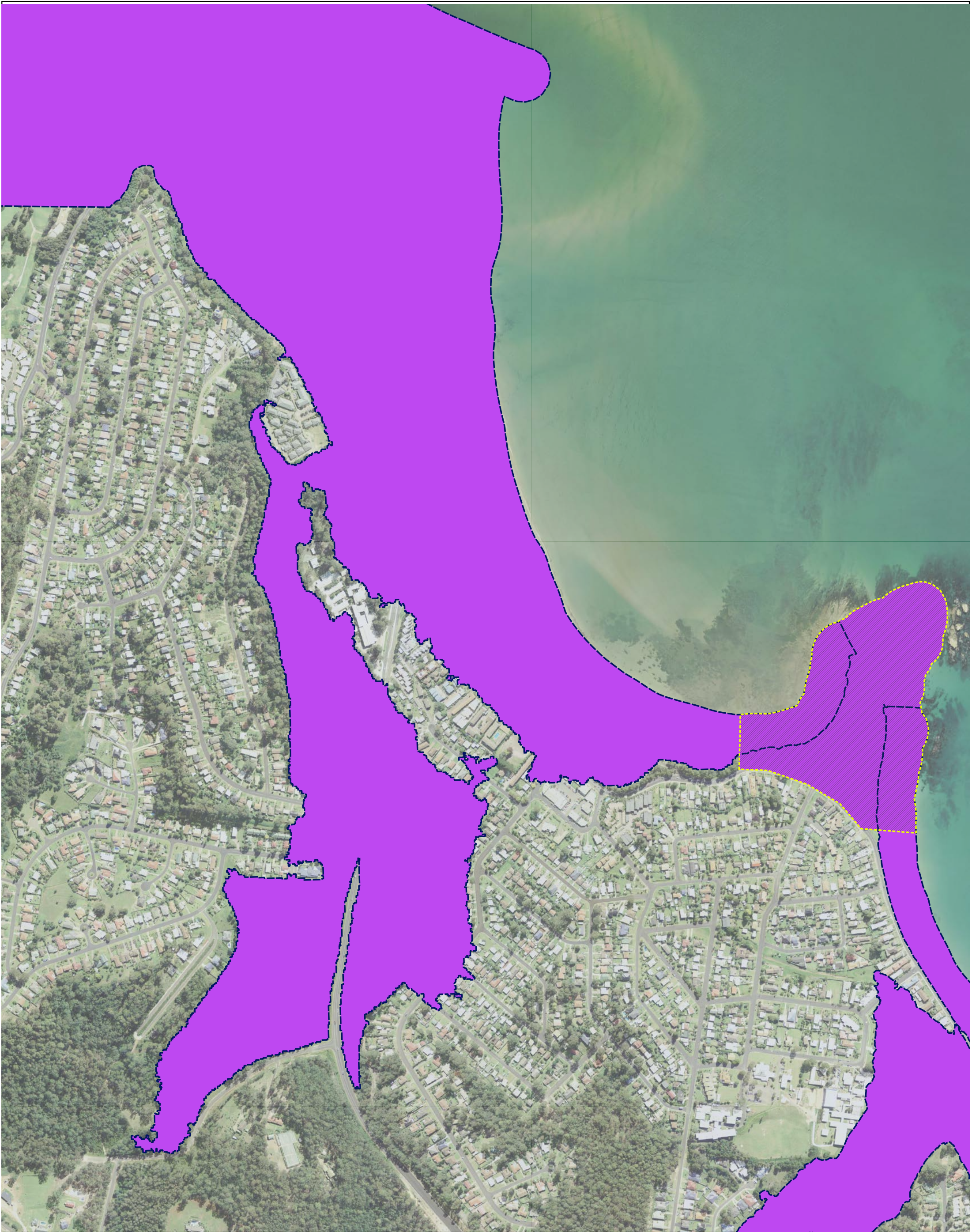
100 0 100 200 300 m

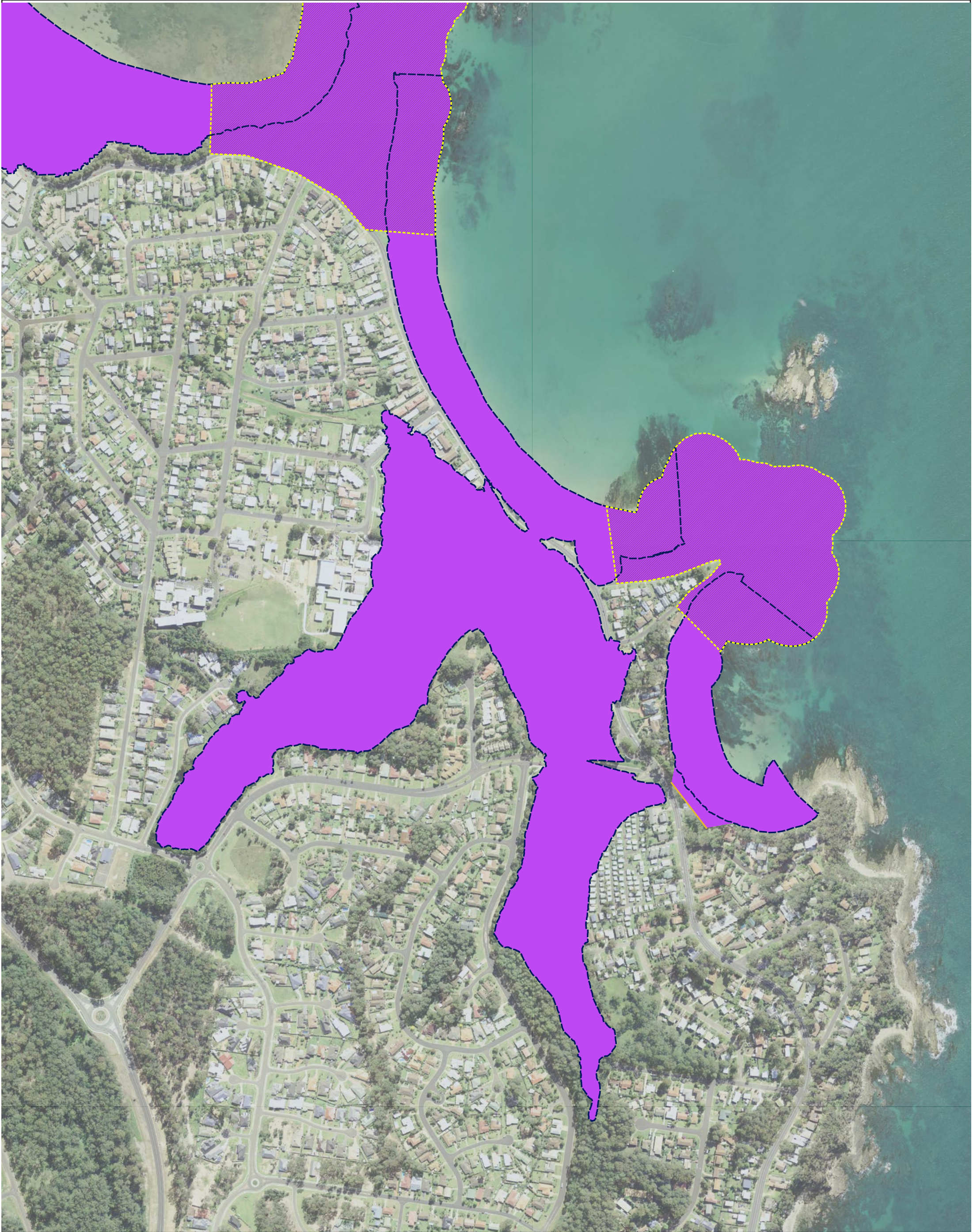


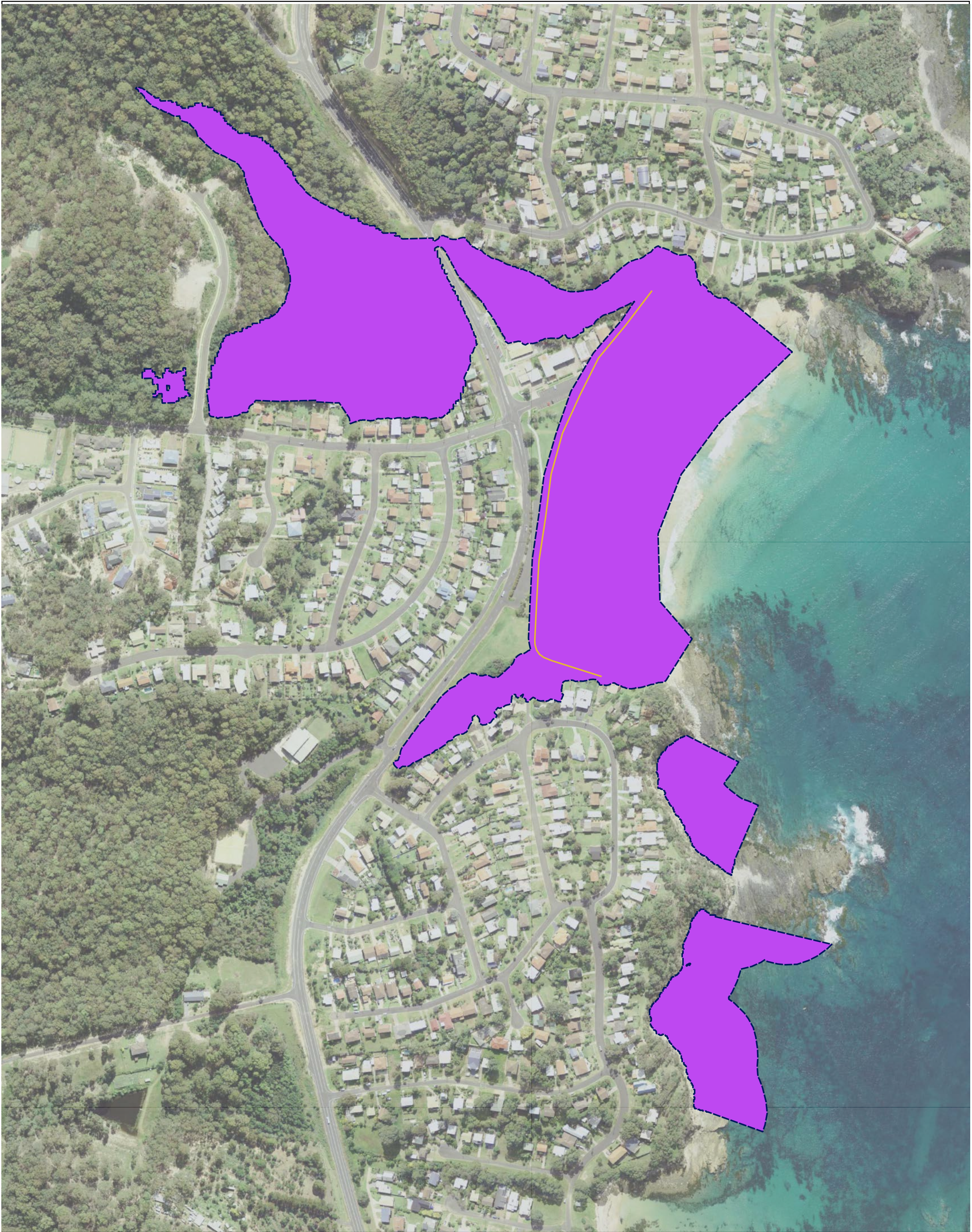
Legend

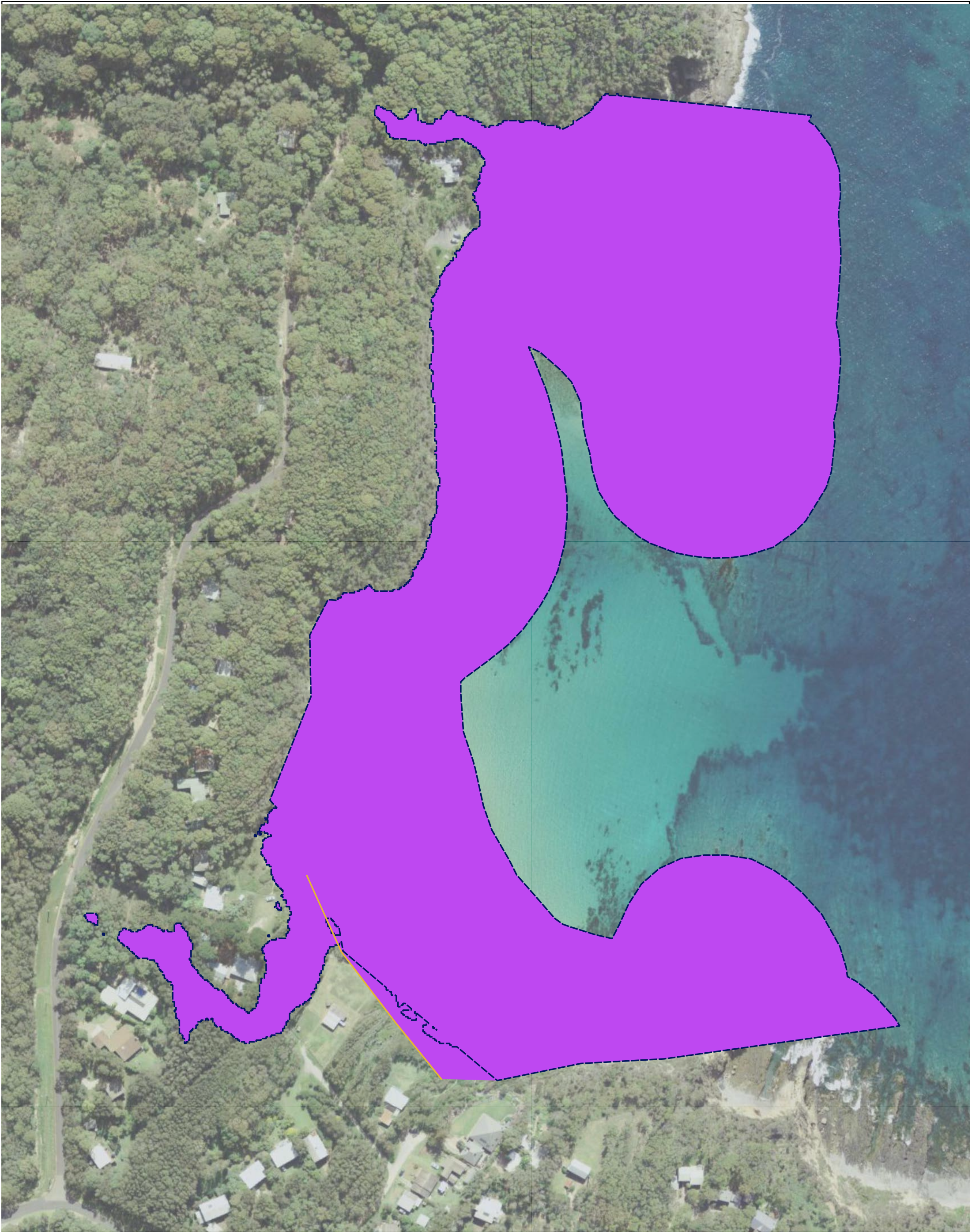
-  Coastal Vulnerability Area
-  2100 Coastal Erosion Risk
-  2100 Coastal Inundation Risk
-  Coastal cliff or slope instability

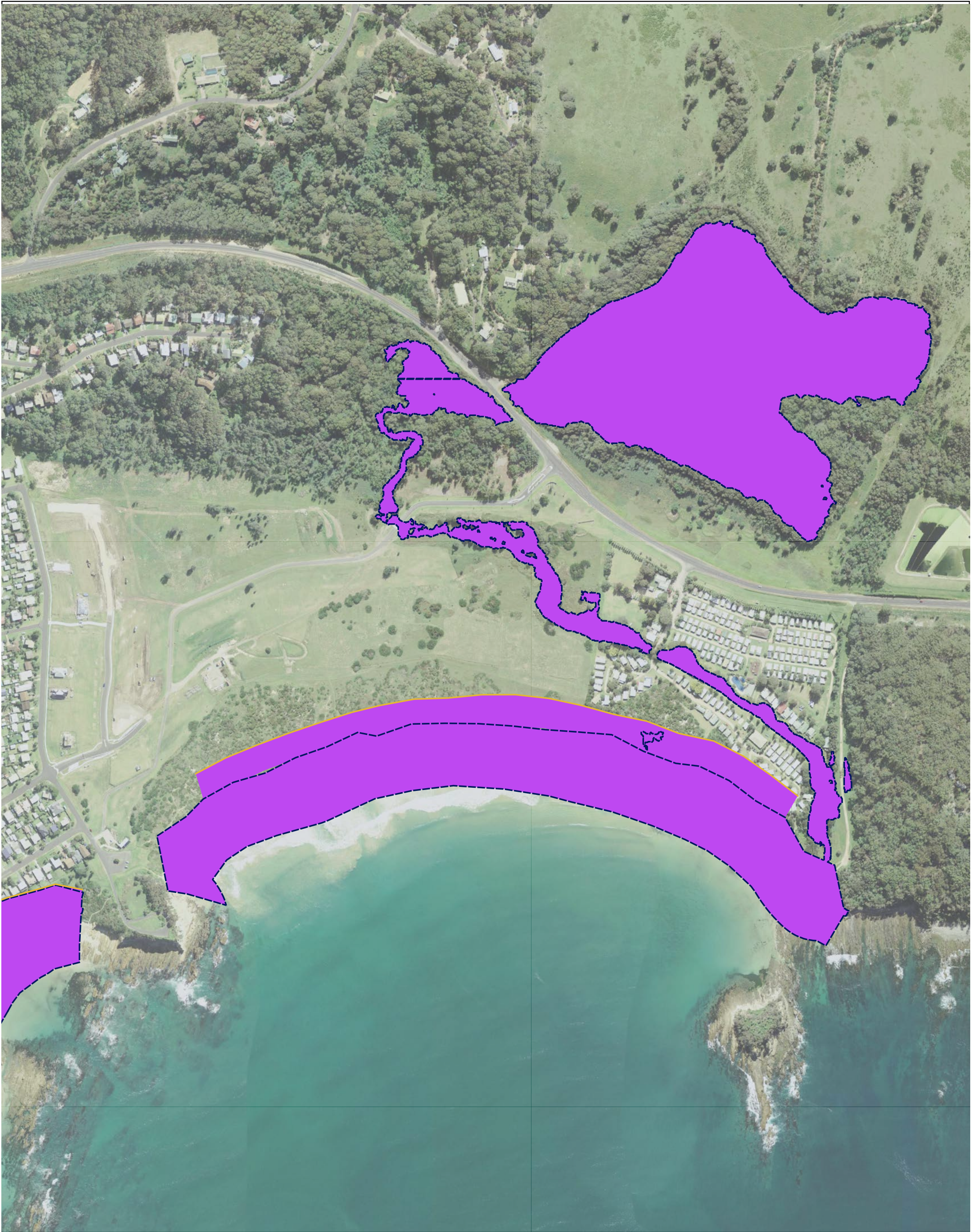
RG-07-01
Coastal Vulnerability Area
Boat Harbour



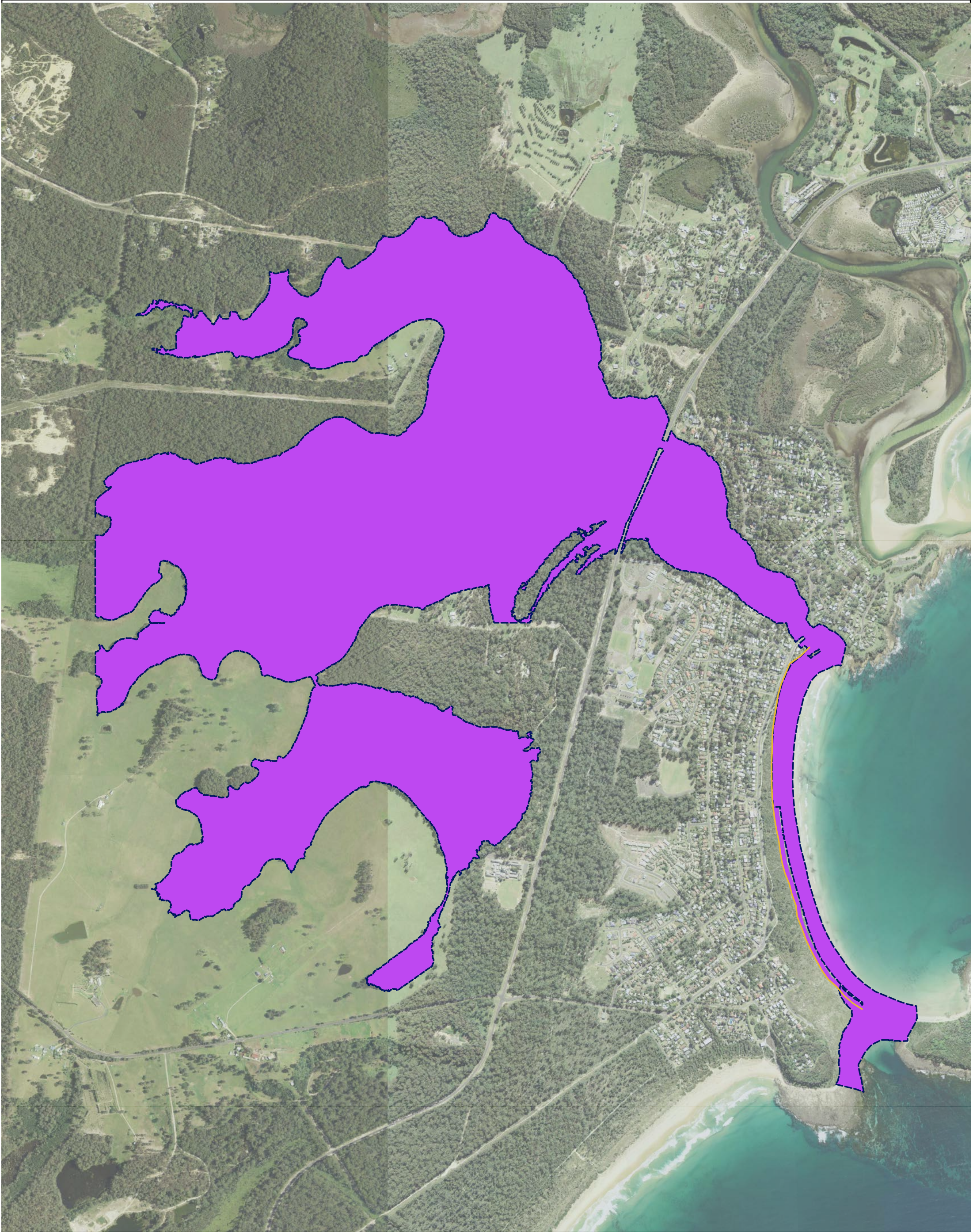




















engineering | environmental | economics | engagement

Scale : 1:15000@A3
Date : 1 December 2022
Revision : C
Created by : LRE
Coordinate System : MGA 94

Legend

-  Coastal Vulnerability Area
-  2100 Coastal Erosion Risk
-  2100 Coastal Inundation Risk
-  Coastal cliff or slope instability

300 0 300 600 900 m



RG-07-01
Coastal Vulnerability Area
Broulee