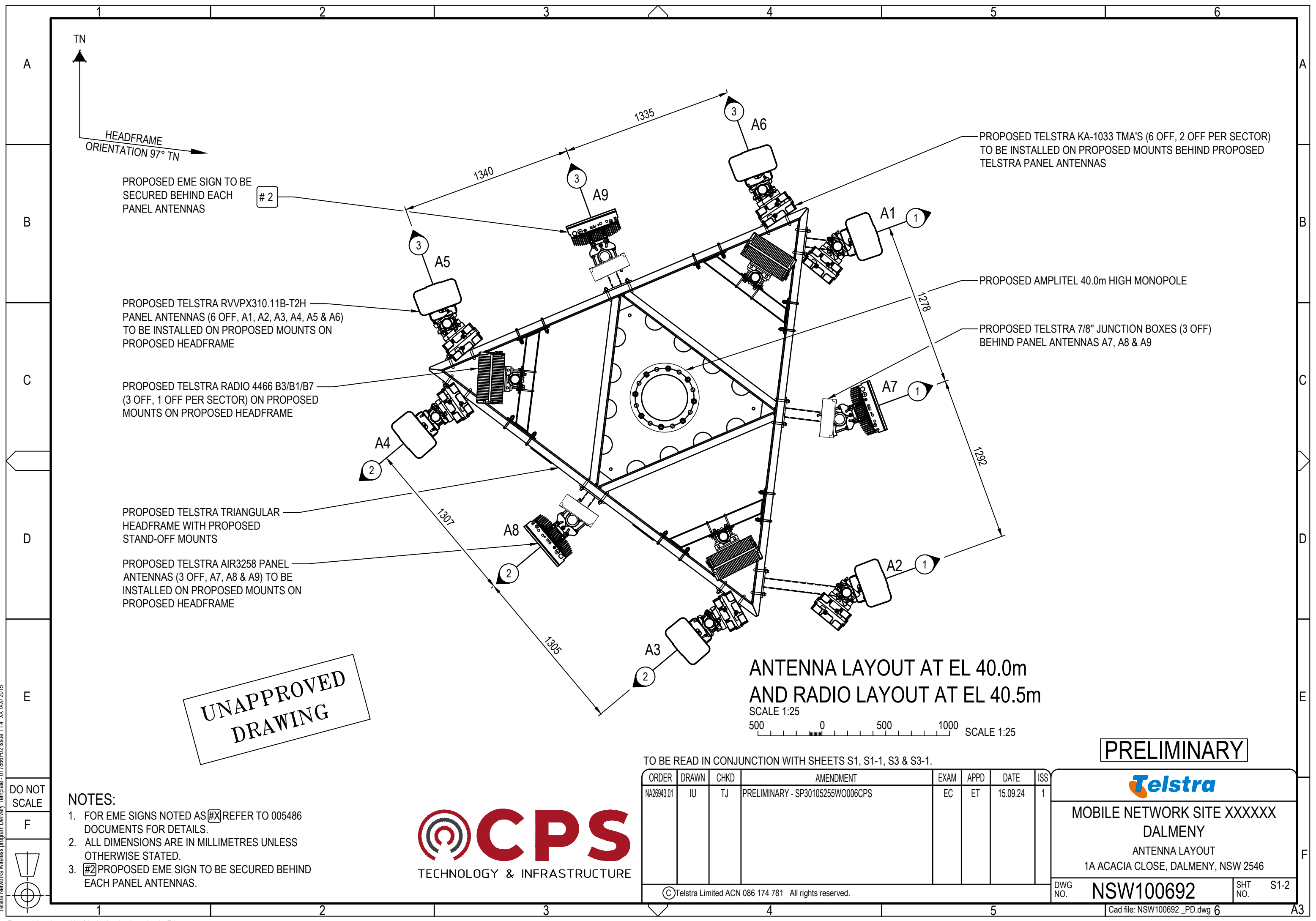






Telstra Networks Wireless program Delivery Template - 017866P02 issue 11.4 XX/XX/2015



UNAPPROVED  
DRAWING

ANTENNA LAYOUT AT EL 40.0m  
AND RADIO LAYOUT AT EL 40.5m  
SCALE 1:25

DO NOT  
SCALE

F

- NOTES:
- FOR EME SIGNS NOTED AS #X REFER TO 005486 DOCUMENTS FOR DETAILS.
  - ALL DIMENSIONS ARE IN MILLIMETRES UNLESS OTHERWISE STATED.
  - #2 PROPOSED EME SIGN TO BE SECURED BEHIND EACH PANEL ANTENNAS.



TO BE READ IN CONJUNCTION WITH SHEETS S1, S1-1, S3 & S3-1.

ORDER	DRAWN	CHKD	AMENDMENT	EXAM	APPD	DATE	ISS
NA26943.01	IU	TJ	PRELIMINARY - SP30105255WO006CPS	EC	ET	15.09.24	1

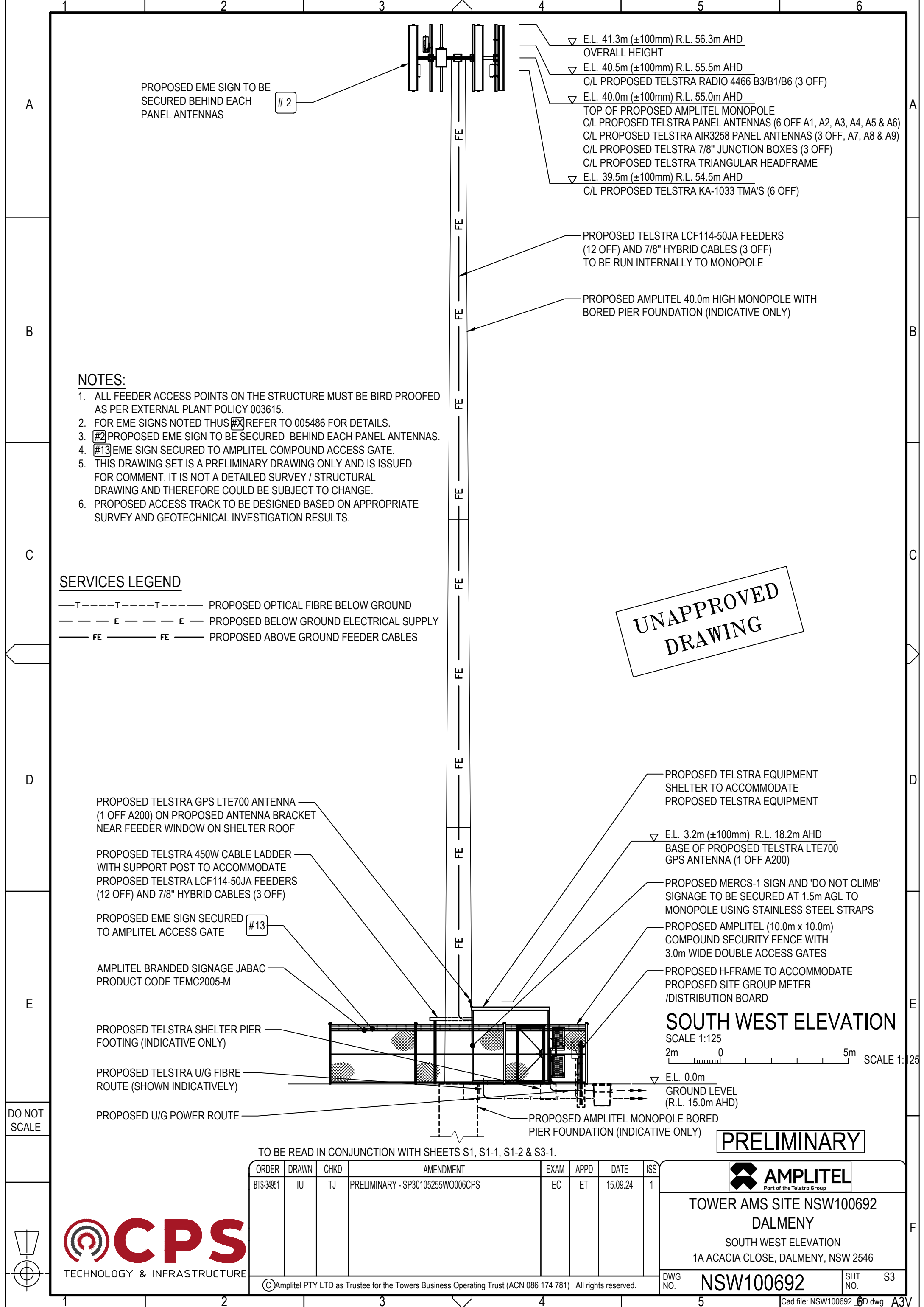
© Telstra Limited ACN 086 174 781 All rights reserved.

PRELIMINARY

MOBILE NETWORK SITE XXXXXX  
DALMENY  
ANTENNA LAYOUT  
1A ACACIA CLOSE, DALMENY, NSW 2546

DWG NO. NSW100692

SHT NO. S1-2



NOTES:

- 1. ALL FEEDER ACCESS POINTS ON THE STRUCTURE MUST BE BIRD PROOFED AS PER EXTERNAL PLANT POLICY 003615.
- 2. FOR EME SIGNS NOTED THUS #X REFER TO 005486 FOR DETAILS.
- 3. #2 PROPOSED EME SIGN TO BE SECURED BEHIND EACH PANEL ANTENNAS.
- 4. #13 EME SIGN SECURED TO AMPLITEL COMPOUND ACCESS GATE.
- 5. THIS DRAWING SET IS A PRELIMINARY DRAWING ONLY AND IS ISSUED FOR COMMENT. IT IS NOT A DETAILED SURVEY / STRUCTURAL DRAWING AND THEREFORE COULD BE SUBJECT TO CHANGE.
- 6. PROPOSED ACCESS TRACK TO BE DESIGNED BASED ON APPROPRIATE SURVEY AND GEOTECHNICAL INVESTIGATION RESULTS.

SERVICES LEGEND

- T—T—T— PROPOSED OPTICAL FIBRE BELOW GROUND
- E—E—E— PROPOSED BELOW GROUND ELECTRICAL SUPPLY
- FE—FE—FE— PROPOSED ABOVE GROUND FEEDER CABLES

UNAPPROVED  
DRAWING

SOUTH WEST ELEVATION

SCALE 1:125  
2m 0 5m SCALE 1:25

E.L. 0.0m  
GROUND LEVEL  
(R.L. 15.0m AHD)

PRELIMINARY

TO BE READ IN CONJUNCTION WITH SHEETS S1, S1-1, S1-2 & S3-1.

ORDER	DRAWN	CHKD	AMENDMENT	EXAM	APPD	DATE	ISS
BTS-34951	IU	TJ	PRELIMINARY - SP30105255W0006CPS	EC	ET	15.09.24	1



TOWER AMS SITE NSW100692  
DALMENY  
SOUTH WEST ELEVATION  
1A ACACIA CLOSE, DALMENY, NSW 2546

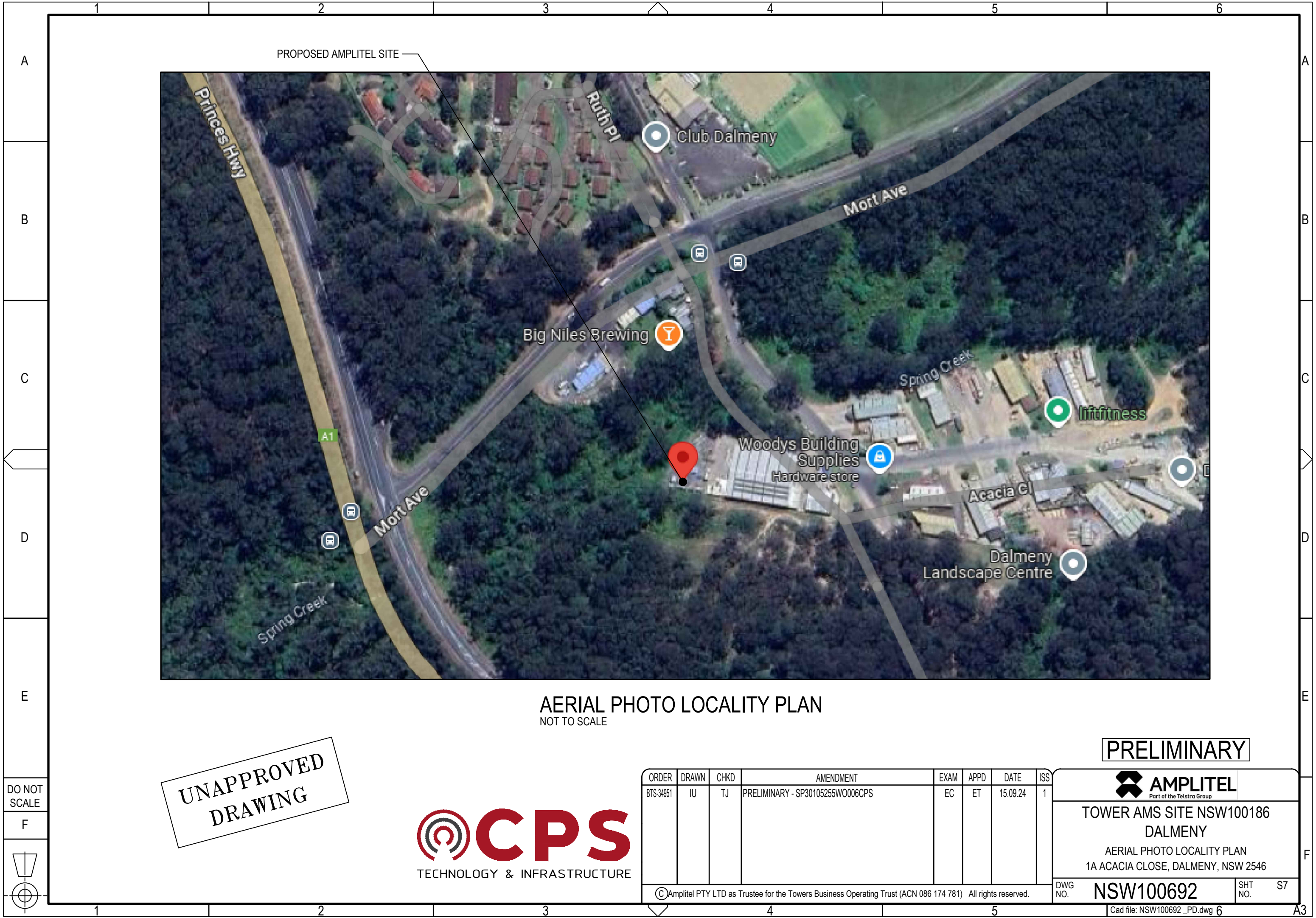
DWG NO. NSW100692 SHT NO. S3

©Amplitel PTY LTD as Trustee for the Towers Business Operating Trust (ACN 086 174 781) All rights reserved.

Cad file: NSW100692 6D.dwg A3V



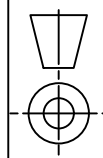




AERIAL PHOTO LOCALITY PLAN  
NOT TO SCALE

DO NOT  
SCALE

F



The copyright and ownership of this drawing is assigned to Amplitel and must not be copied or saved elsewhere without written permission from Amplitel.

UNAPPROVED  
DRAWING



ORDER	DRAWN	CHKD	AMENDMENT	EXAM	APPD	DATE	ISS
BTS-34951	IU	TJ	PRELIMINARY - SP30105255WO006CPS	EC	ET	15.09.24	1
© Amplitel PTY LTD as Trustee for the Towers Business Operating Trust (ACN 086 174 781) All rights reserved.							

PRELIMINARY



TOWER AMS SITE NSW100186  
DALMENY  
AERIAL PHOTO LOCALITY PLAN  
1A ACACIA CLOSE, DALMENY, NSW 2546

DWG NO.	NSW100692	SHT NO.	S7
---------	-----------	---------	----

Cad file: NSW100692\_PD.dwg 6

A3