

INCLUSIVE PLAY

IDEAS BOOKLET

CORRIGAN'S RESERVE
PLAYGROUND



Fiona Robbé
Landscape Architects



January 2016

Document Issue:

First Draft Issued 1 February 2016

Prepared by

Fiona Robbé Landscape Architects
108 Arcadia Road, Arcadia, NSW 2159
Ph: 02 96531045 Fax 02 96531229

© 29th January 2016. Fiona Robbé Landscape Architects. All rights reserved.

Fiona Robbé has prepared this document for the sole use of the Client and for a specific purpose, each as expressly stated in the document. No other party should rely on this document without the prior written consent of FRLA. FRLA undertakes no duty, nor accepts any responsibility, to any third party who may rely upon or use this document. This document has been prepared based on the Client's description of its requirements and FRLA's experience, having regard to assumptions that FRLA can reasonably be expected to make in accordance with sound professional principles. FRLA may also have relied upon information provided by the Client and other third parties to prepare this document, some of which may not have been verified. Subject to the above conditions, this document may be transmitted, reproduced or disseminated only in its entirety.

TABLE OF CONTENTS

TABLE OF CONTENTS	3
PHILOSOPHY OF PLAY	4
CONCEPT DESIGN	5

PLAYGROUND AREAS:

accessible paths	6
playground entrance	8
graduated balancing	10
spinning	12
rocking	14
flying fox	16
sand play	18
climbing	20
music play	22
decks and slides	24
swinging	26
accessible picnic areas	28
intergenerational sports	30
informal sports and games	33
existing exercise equipment	34
grassed areas	36
garden beds	38
bike track / paths	40

OTHER:

fencing	42
---------	----

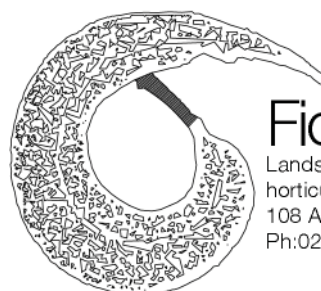
Philosophy of Play

Play is a means of learning to live, an interactive exploration of the possibilities of this world and our place in it. Instinctive, voluntary, spontaneous play is vital to develop the potential of all children.

We firmly commit to the notion that investment in quality play environments is one of the decisive social investments in a sustainable, peaceful, cross-cultural future. Australia is a signatory to the UN Convention on the Rights of the Child, and the work of our practice respects these principles.

The design of Corrigan's Reserve Playground celebrates the joy and spontaneity that children bring to our lives and communicates that they are valued, important people in our society. Children, families and carers will be welcomed to an environment where their needs, interests and abilities have been reflected in the landscape design.

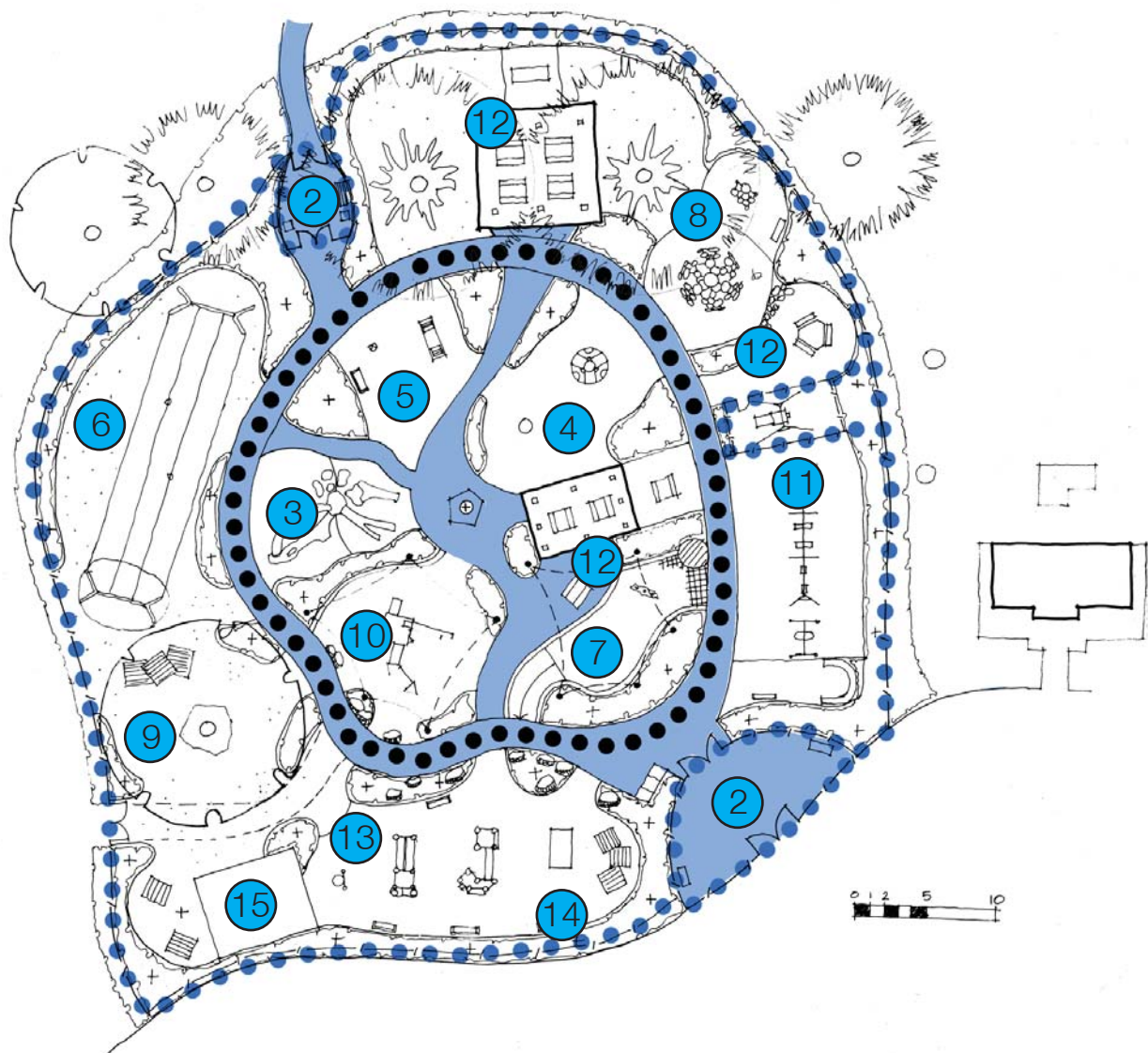
We strive to uphold the theory of Universal Design to it's highest ideological interpretation – for people of all ages, abilities and ethnic origins to feel included in the play environment, and to accomplish this at all levels: socially, emotionally and intellectually. Our playgrounds richly explore the unique ambience of their settings, while intensifying the focus on children's needs and experiences in an environment of exuberance, challenge and wonder.



Fiona Robbé

Landscape architecture,
horticulture and playspace design
108 Arcadia Road Arcadia NSW 2159
Ph:02 96531045 Fax: 02 96531229

Concept Design Plan



PLAYGROUND AREAS:

- | | |
|------------------------|---------------------------------|
| 1. ACCESSIBLE PATHS | 10. DECKS AND SLIDES |
| 2. PLAYGROUND ENTRANCE | 11. SWINGING |
| 3. GRADUATED BALANCING | 12. ACCESSIBLE PICNIC AREAS |
| 4. SPINNING | 13. INTERGENERATIONAL SPORTS |
| 5. ROCKING | 14. INFORMAL SPORTS & GAMES |
| 6. FLYING FOX | 15. EXISTING EXERCISE EQUIPMENT |
| 7. SAND PLAY | 16. GRASSED AREAS (NUMEROUS) |
| 8. CLIMBING | 17. GARDEN BEDS (NUMEROUS) |
| 9. MUSIC PLAY | 18. BIKE TRACK/PATH |

- OTHER:
19. FENCING



ACCESSIBLE PATHS





ACCESSIBLE PATHS

1:20 grade, wide, accessible concrete path.

Links carpark to playground.

Links amenities block to playground





PLAYGROUND ENTRANCE





PLAYGROUND ENTRANCE

Tall posts emphasise the entrance.

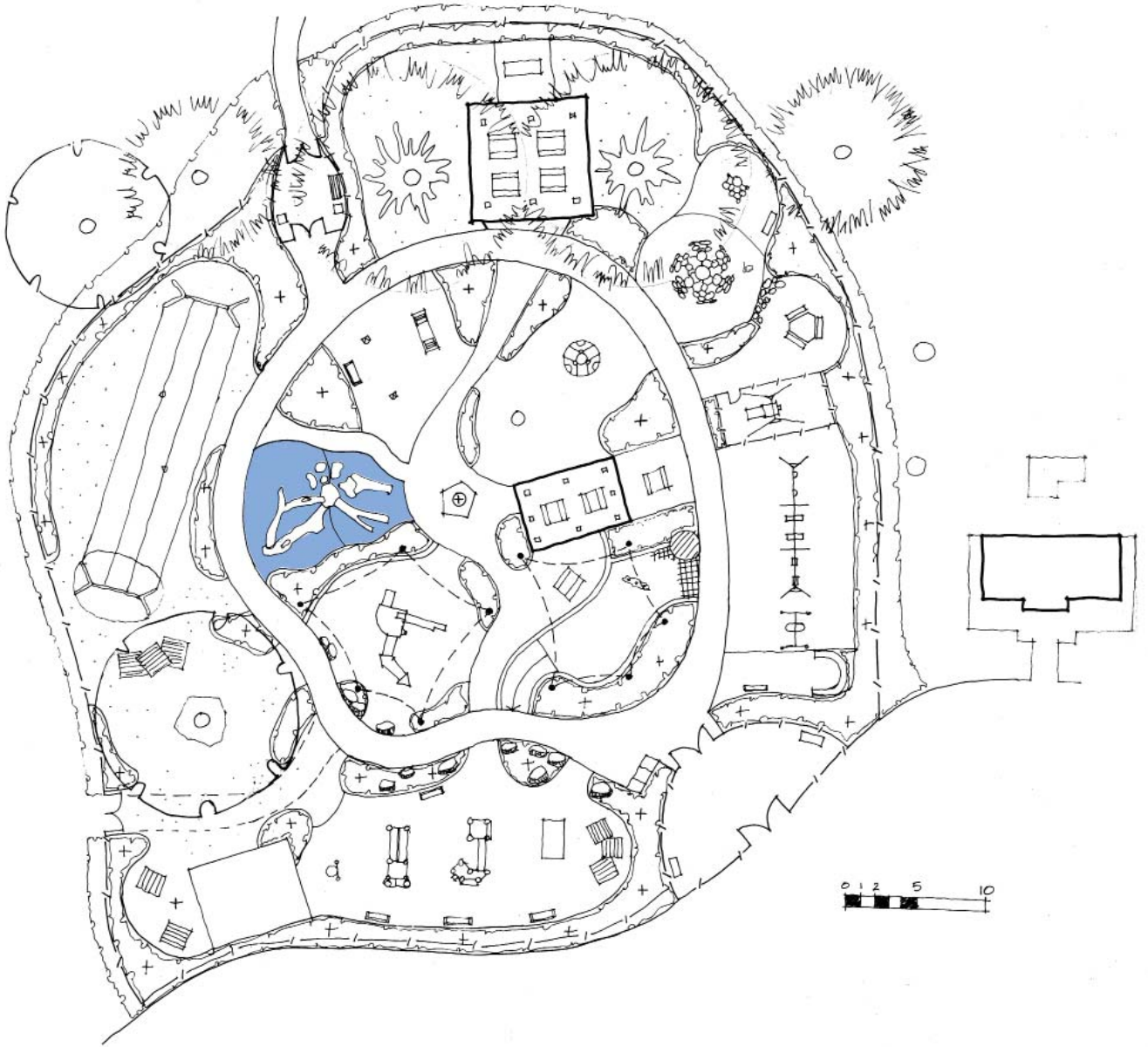
Colour contrast makes it visible from a distance.

Message of welcome should be felt.

Sense of delight and children's aesthetic should radiate from the entrance.

Seating provides a pause point.





GRADUATED BALANCING

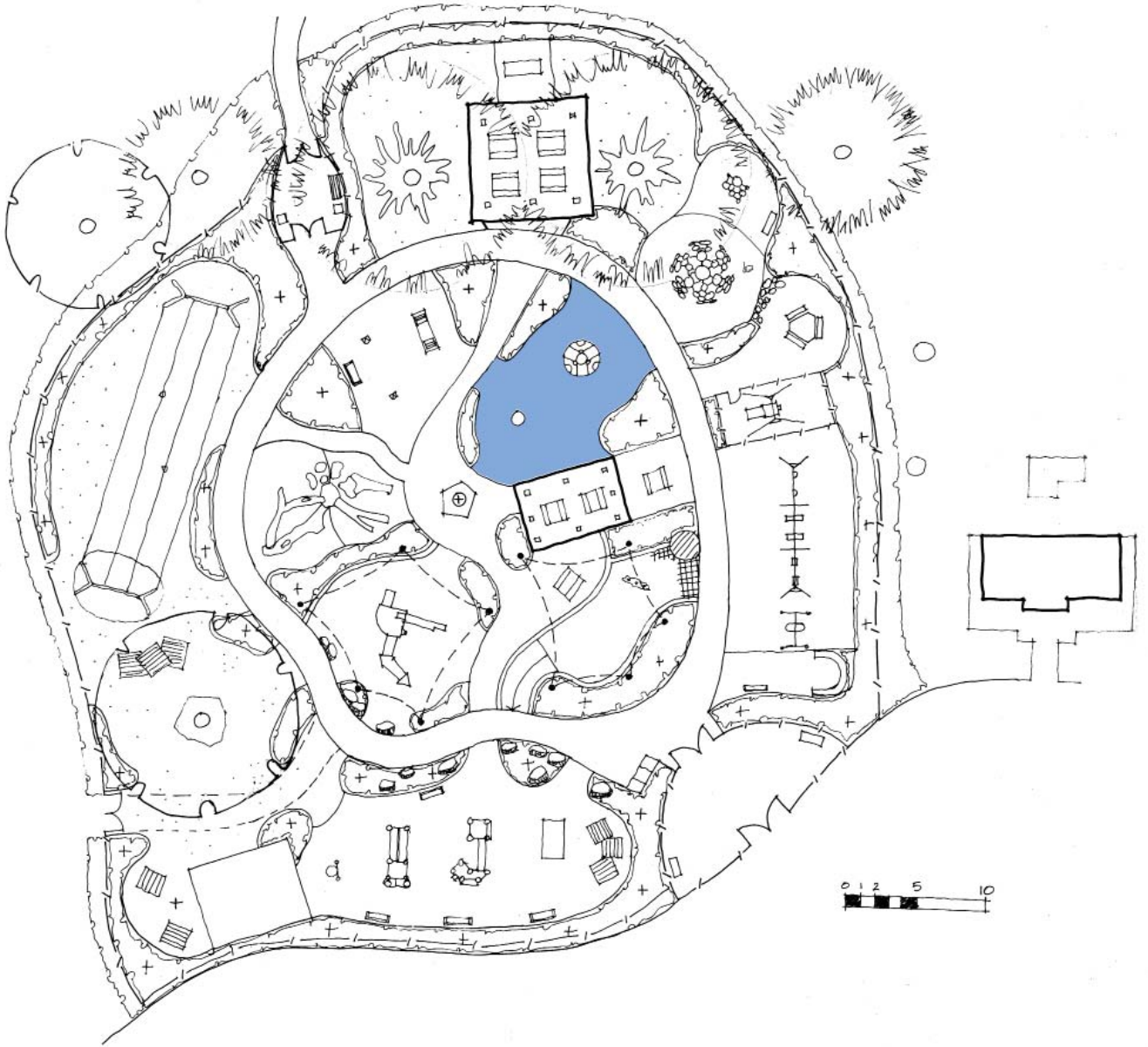




GRADUATED BALANCING

Graduated challenges ensure an activity is available at several skill levels. Balancing starts off level and incrementally becomes harder. Always offered in a looped layout to get back to the beginning easily.



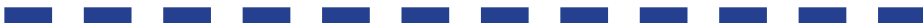


SPINNING



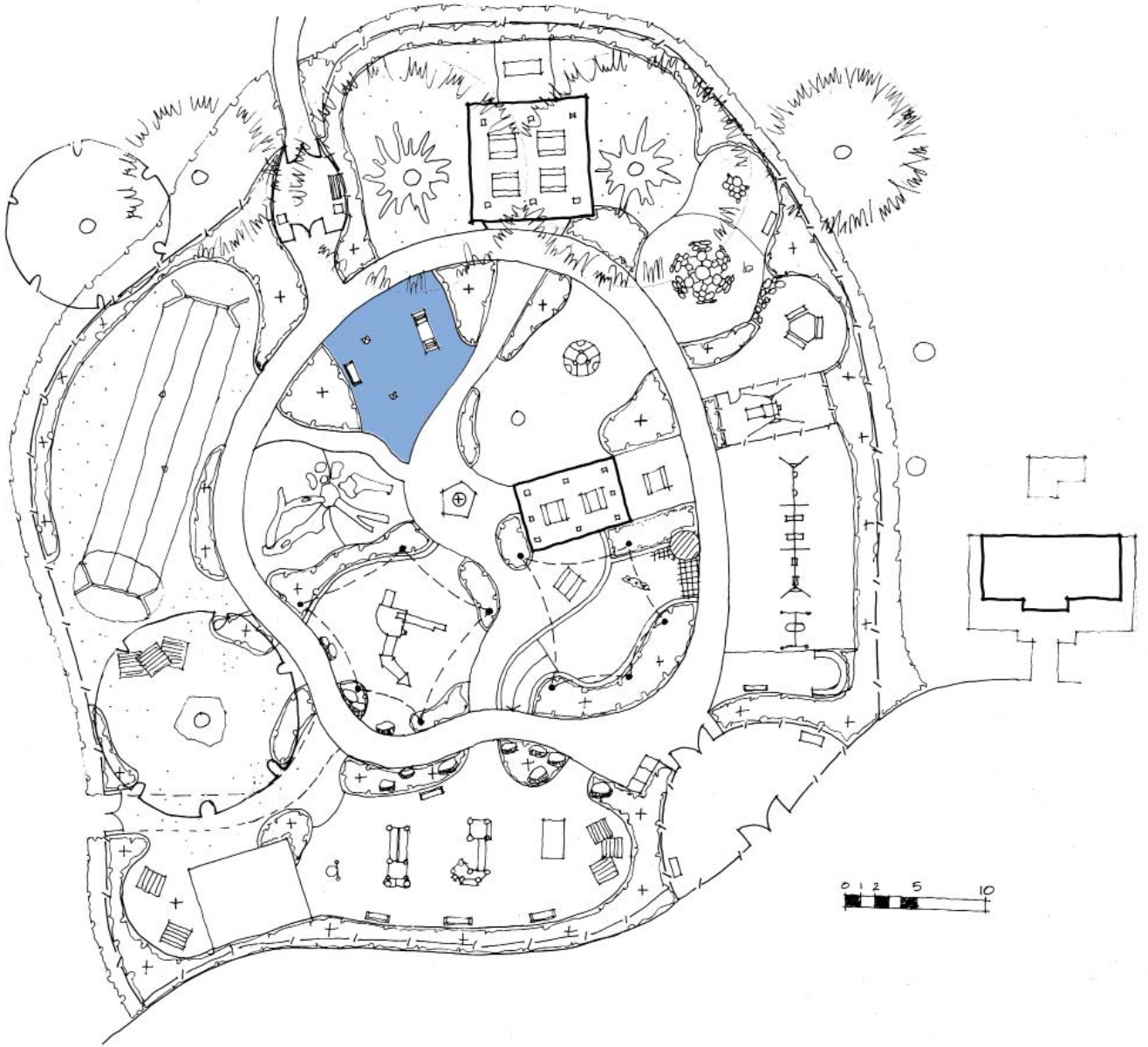


SPINNING



Graduated challenges ensure an activity is available at several skill levels. Spinning is offered for individuals and for groups. A variety of postural supports are offered. Wheelchair accessible spinning makes it possible for all ages and abilities to join in.





ROCKING





ROCKING



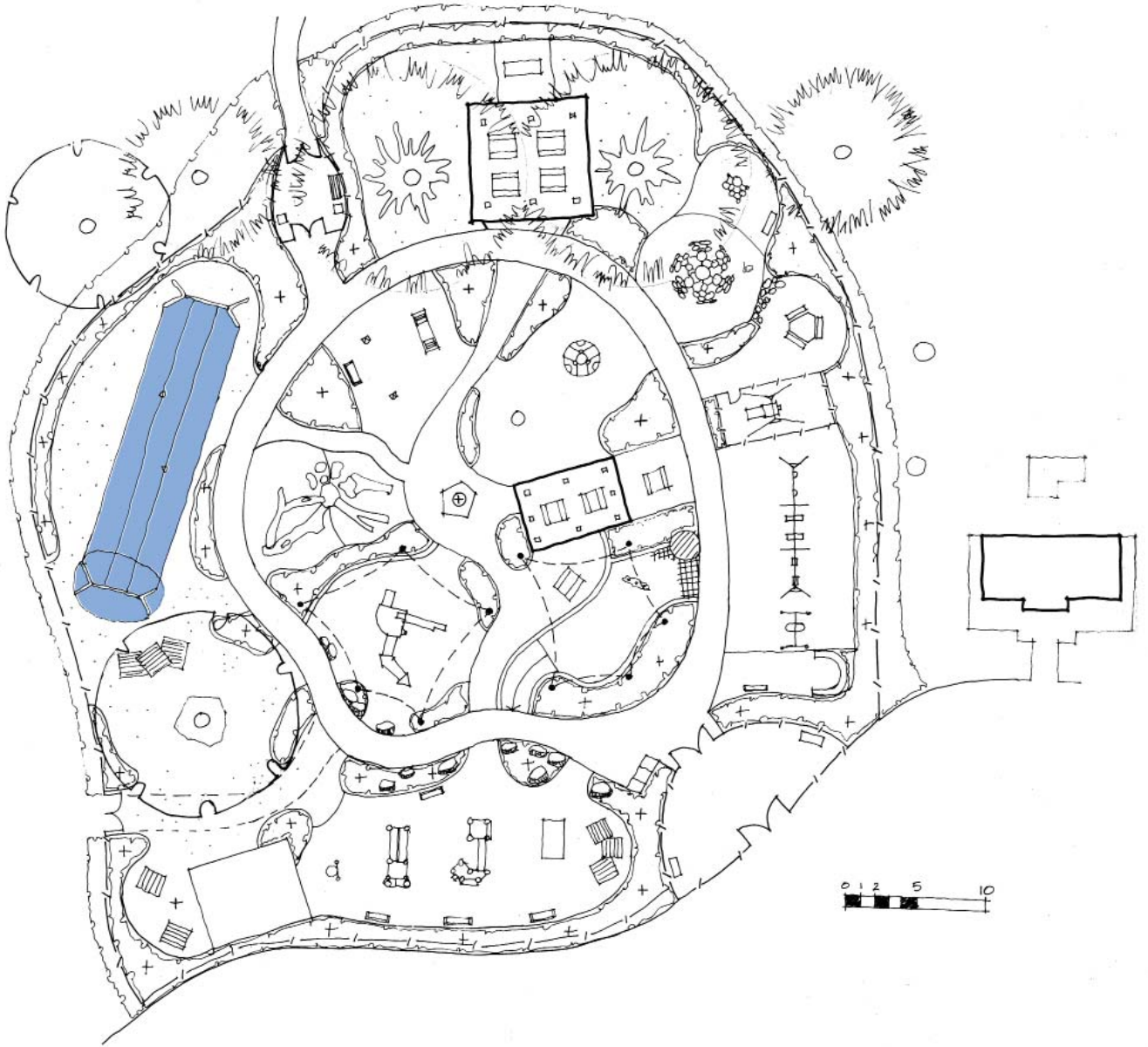
Graduated challenges ensure an activity is available at several skill levels.

Postural support is offered in individual rockers.

The group rocker is fitted with a back and foot support to offer more control.

Group rockers offer intergenerational play opportunities.





FLYING FOX

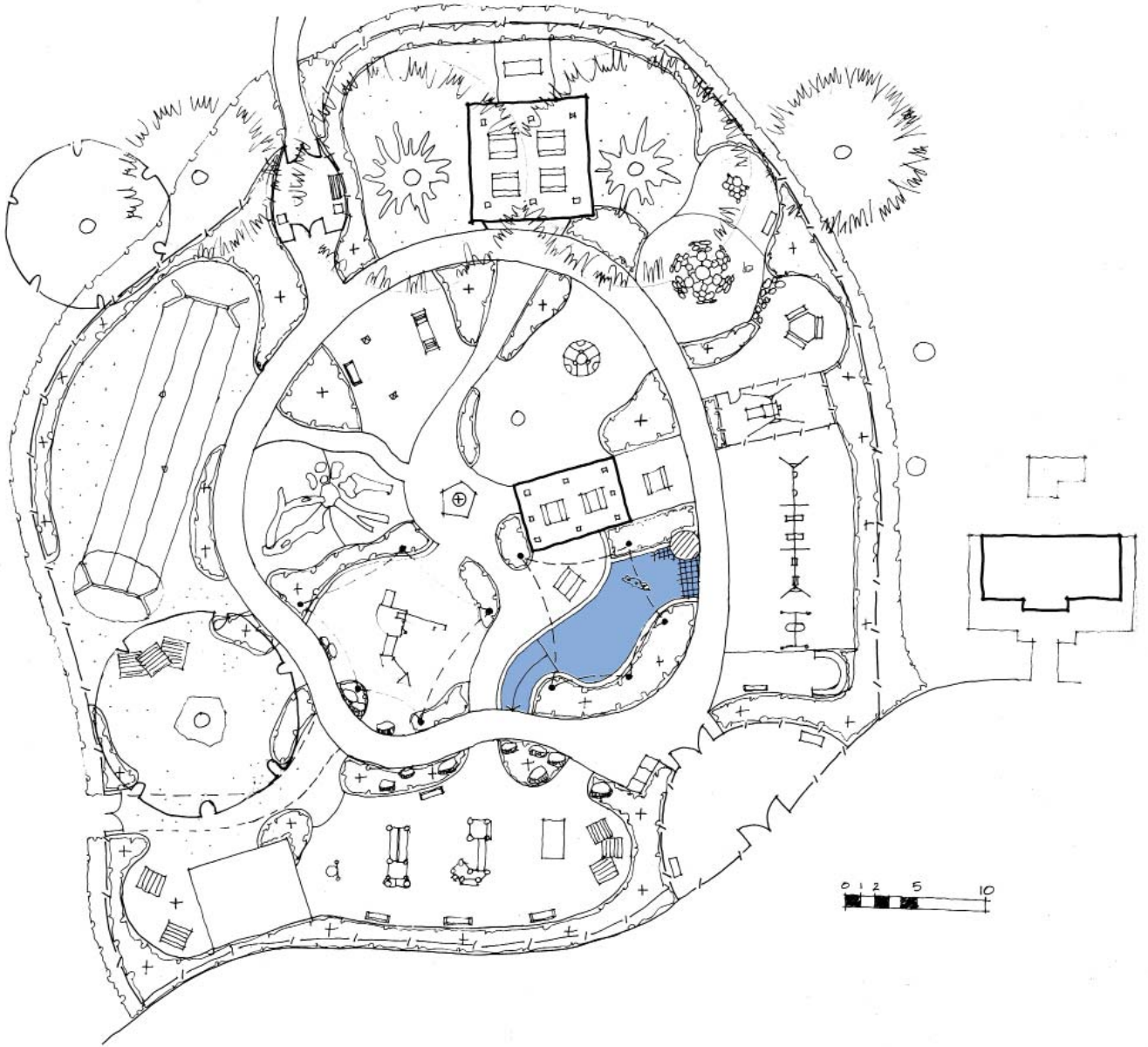




FLYING FOX

A giant double flying fox provides for social side-by-side play. Differing ages and abilities can use the item.





SAND PLAY





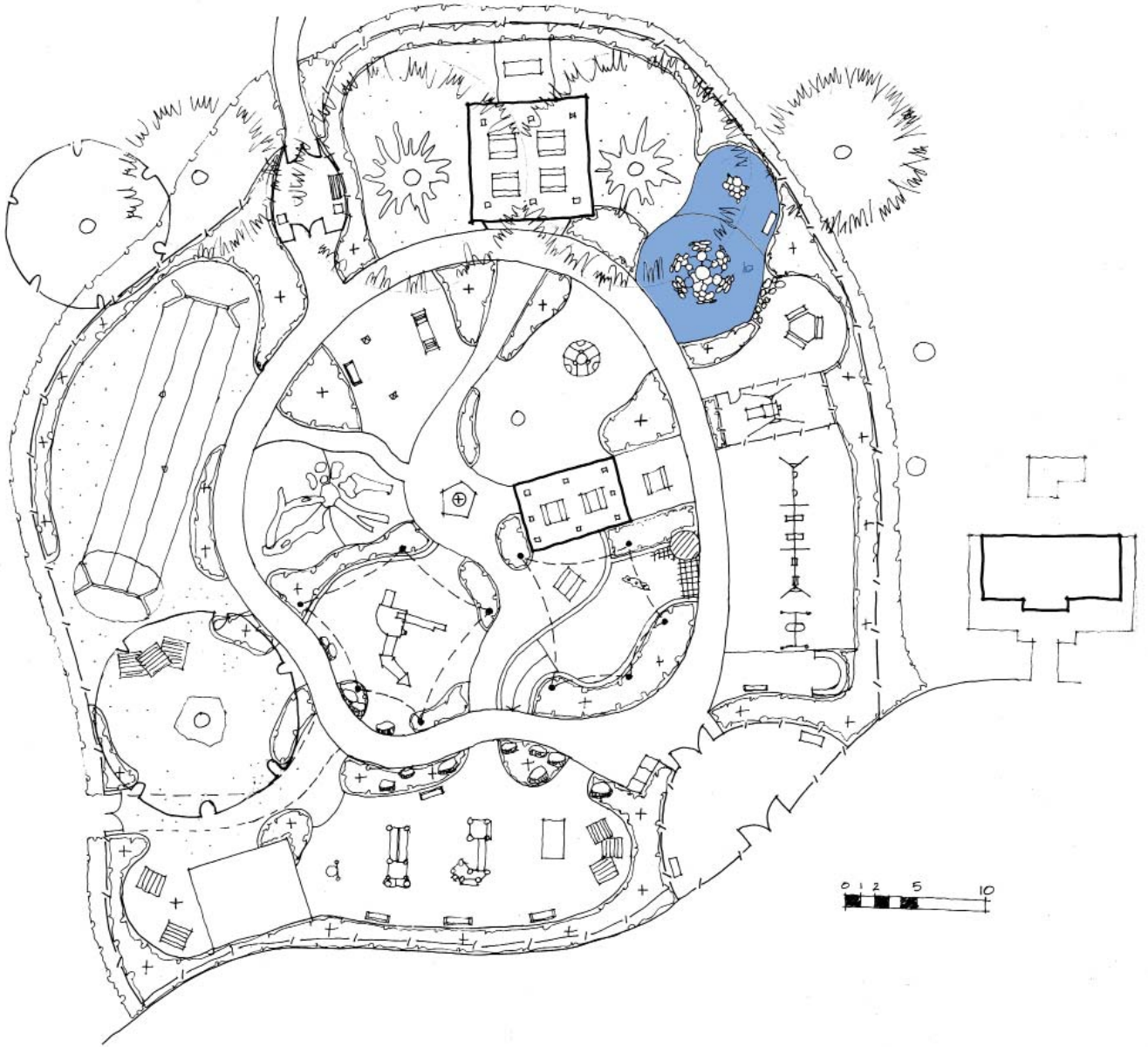
SAND PLAY

— — — — —
An accessible ramp leads all children into the sandpit without stepping over edges.

Raised edging provides additional accessible play surfaces.

Shade structures ensure sustained periods of play in comfort.





CLIMBING





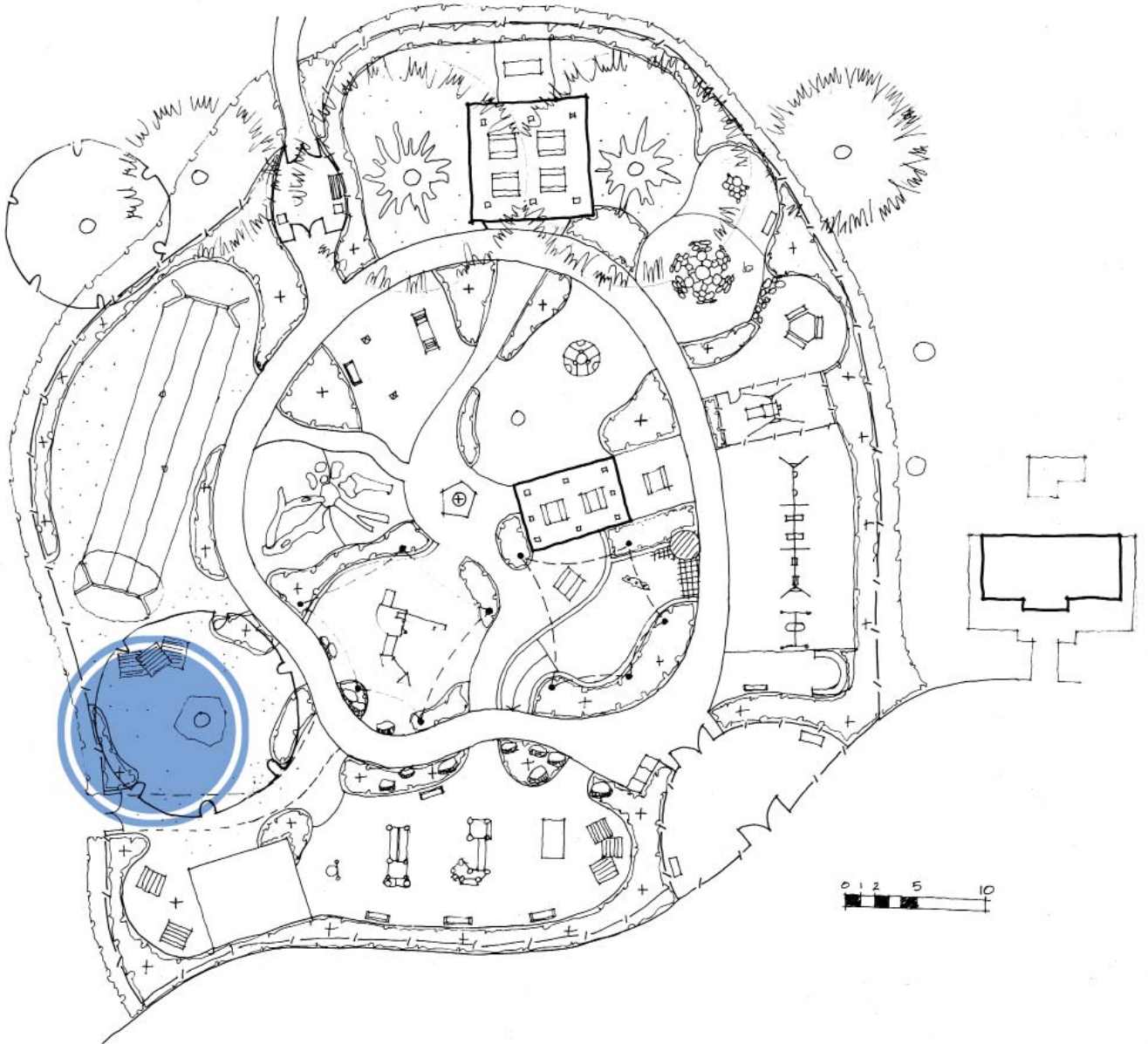
CLIMBING

Activities at various heights, angles and configurations ensures a wide choice of climbing styles.

Additional ground level challenges are included at a lower level.

Rubber surfacing increases accessibility right up to the item.





MUSIC PLAY



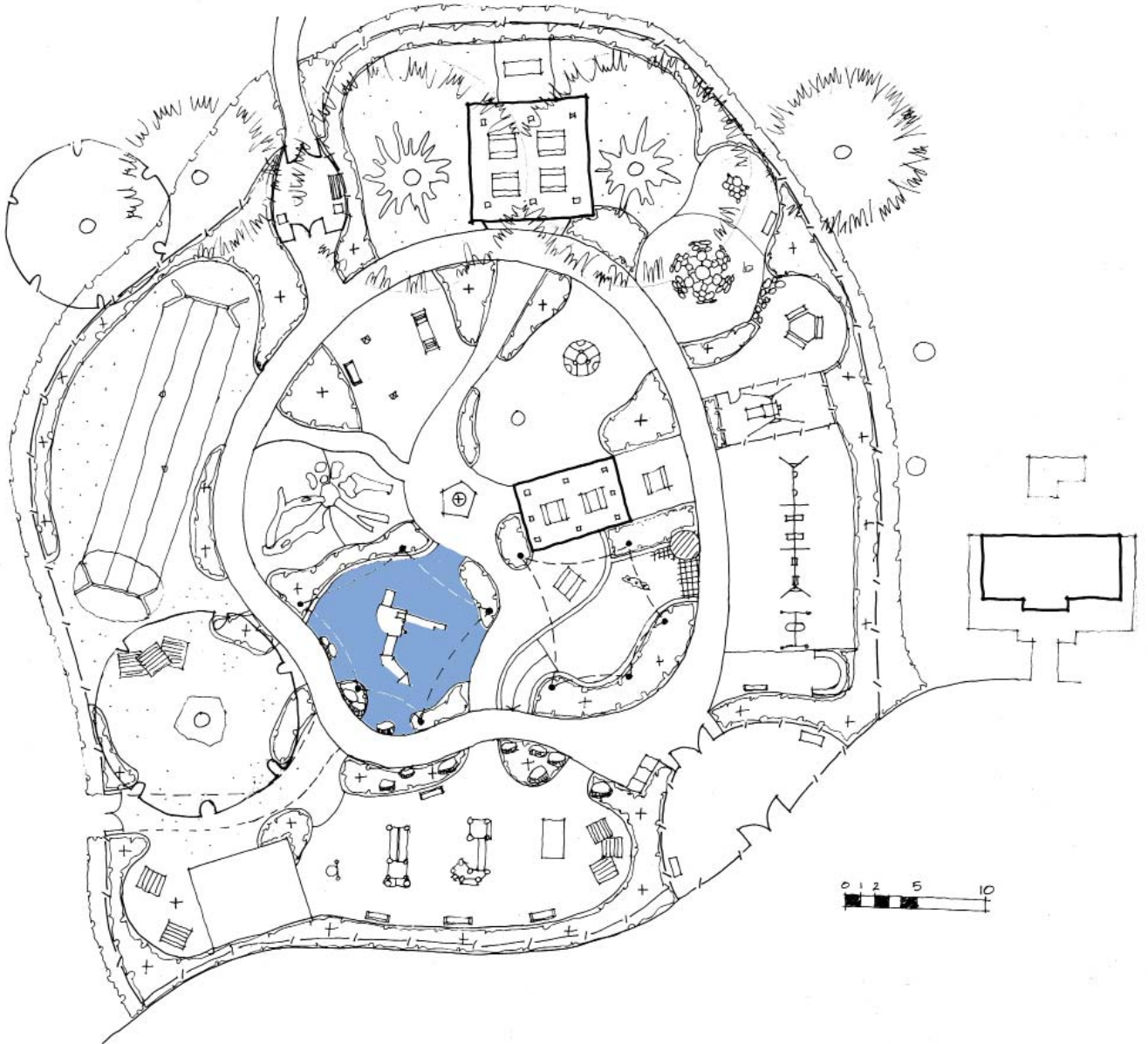


MUSIC PLAY

Sensory layering is applied to all parts of the playground and includes musical items.

Musical activities are at ground level with a specific focus eg. a drum. Small elements are provided that move and respond to touch in a rewarding manner. Tuned instruments are musical no matter the sequence of notes played.





DECKS AND SLIDES



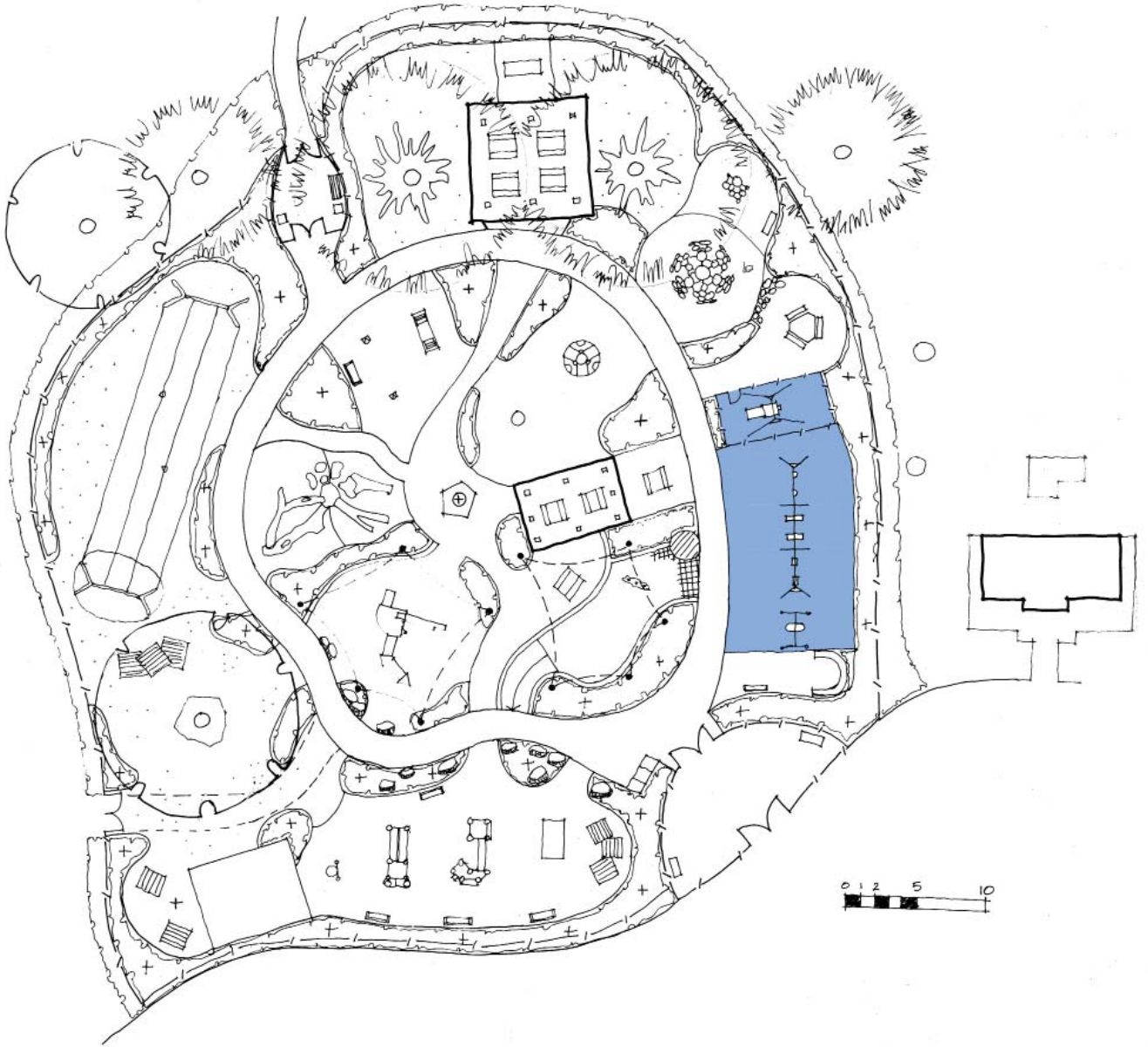


DECKS AND SLIDES



Crawl tunnels and slides are adapted to differing abilities.
Ground level challenges (e.g. mirror) provide additional delight.





SWINGING





SWINGING

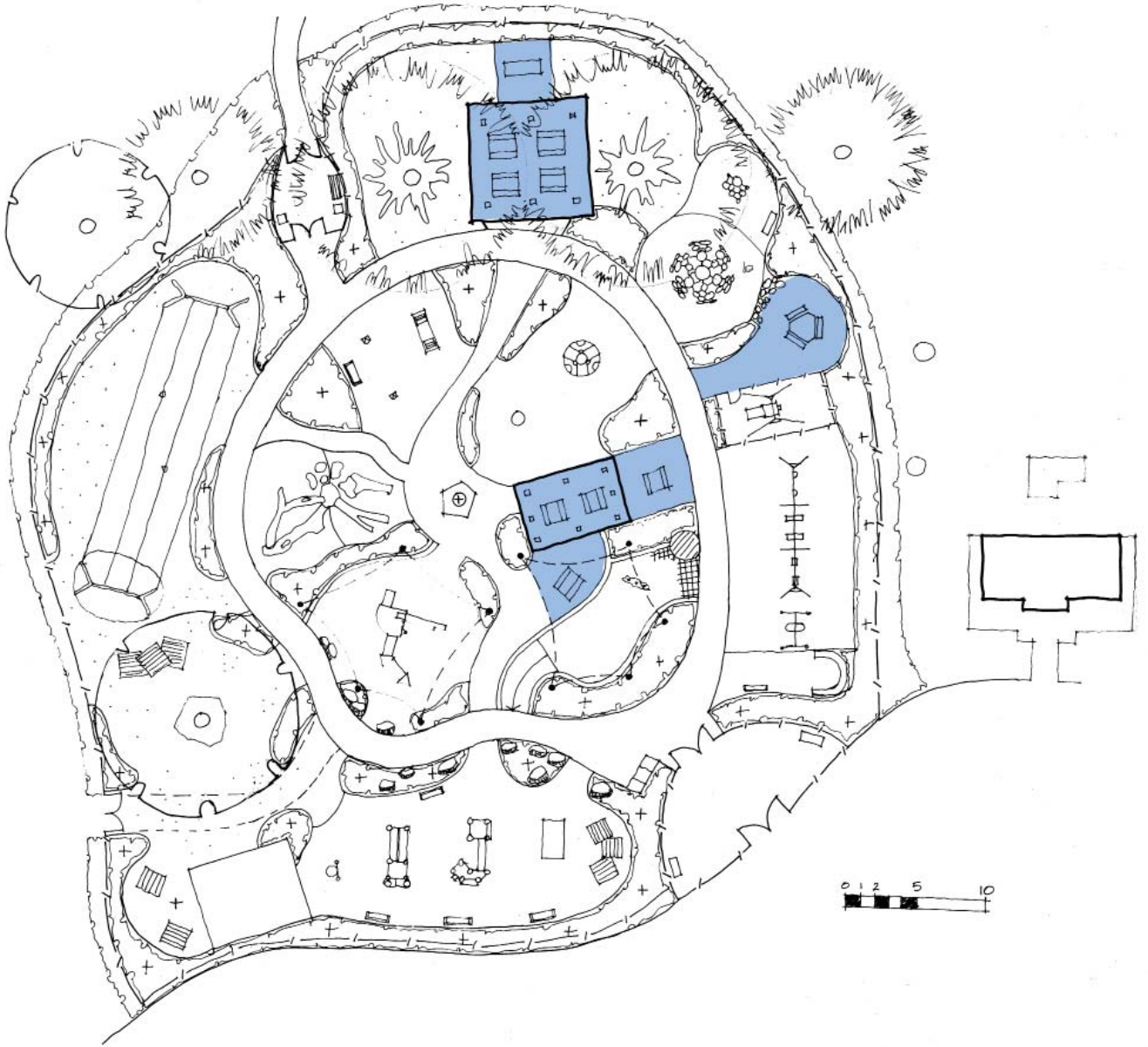
Swings are offered in a number of combinations (toddler seats, strap seats, boat swings).

Rubber surfacing allows for access right up to the swings.

A carer can join the baby on the 'Expression' swing.

Differing postural supports are offered.





ACCESSIBLE PICNIC AREAS

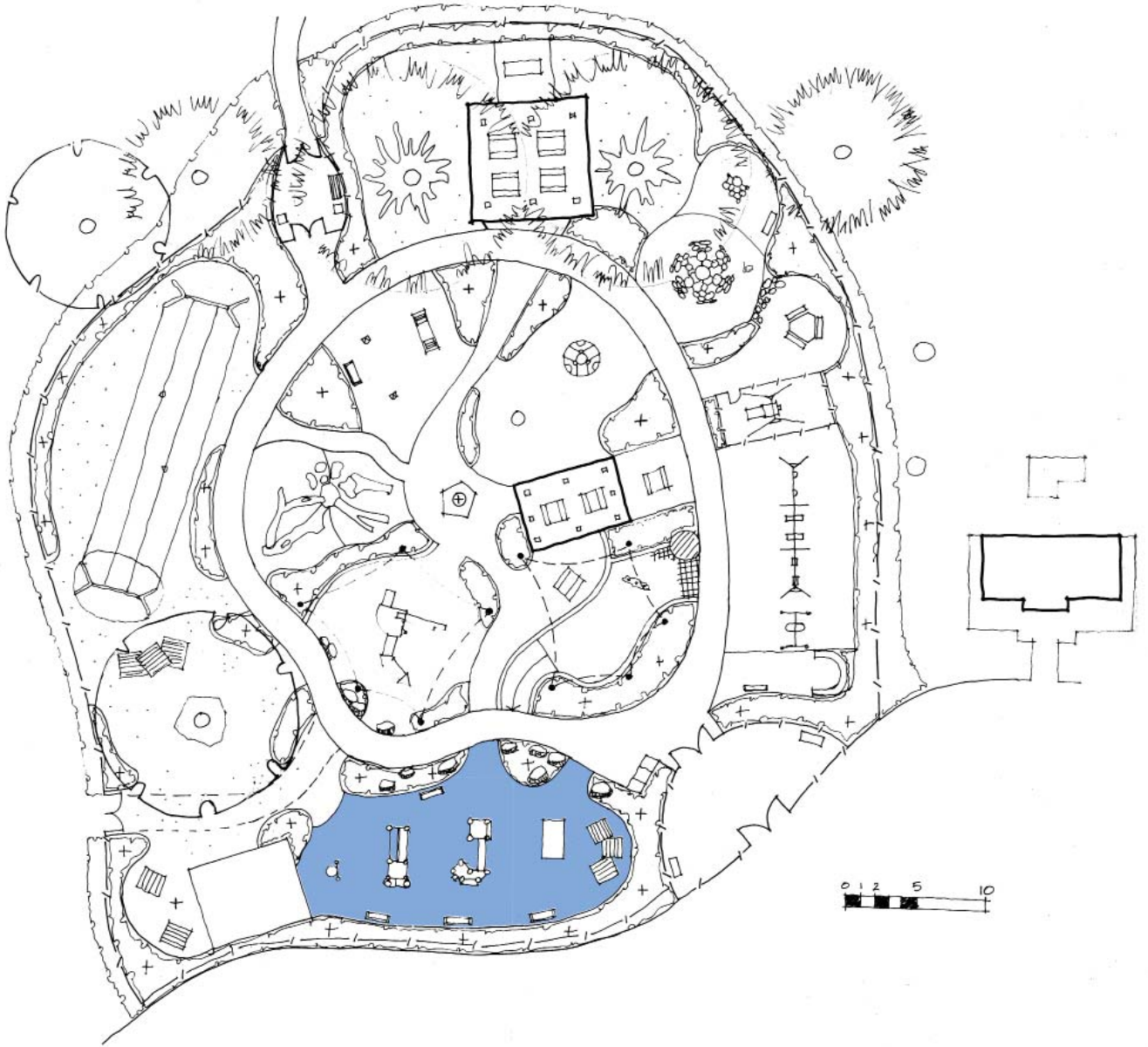
12



ACCESSIBLE PICNIC AREAS

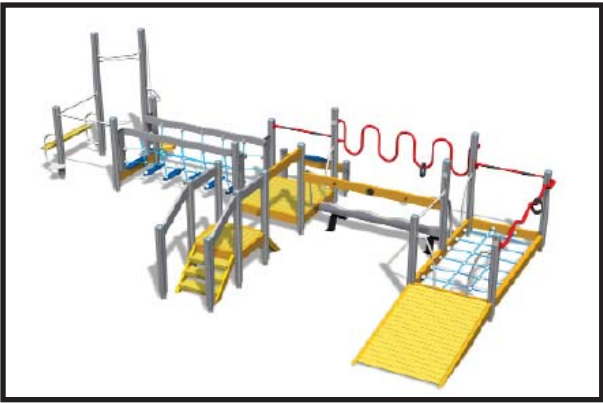
Picnic shelters and accessible picnic tables allow for group gatherings. Accessible paved surfaces provide seamless paths of travel. Existing accessible BBQ units are retained.





INTERGENERATIONAL SPORTS

13

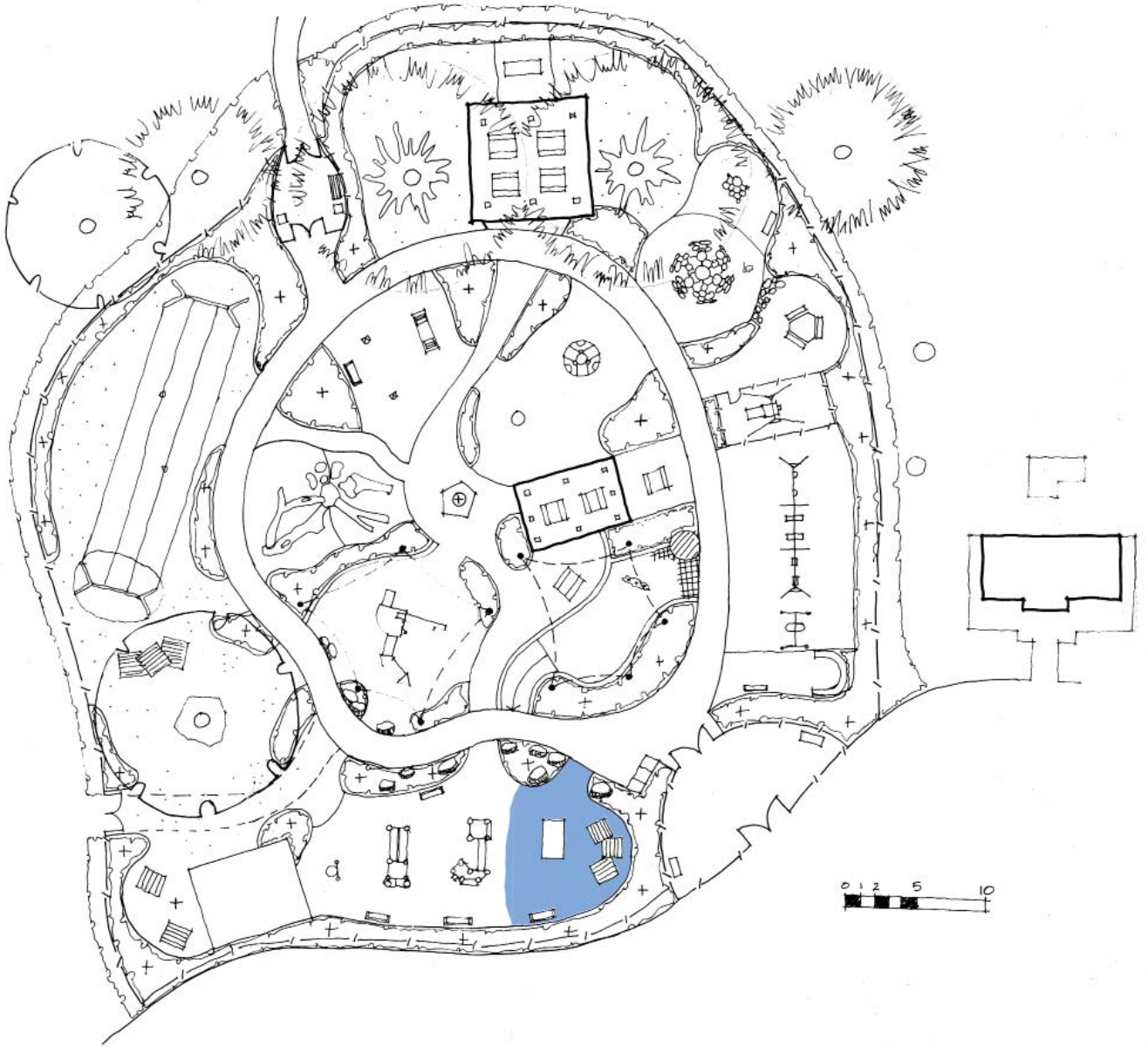


INTERGENERATIONAL SPORTS

— — — — —
This equipment provides for intergenerational play. It is designed for seniors and toddler age groups

Co-ordination, agility, balance, fine and gross motor skills can all be practiced.





INFORMAL SPORT AND GAMES

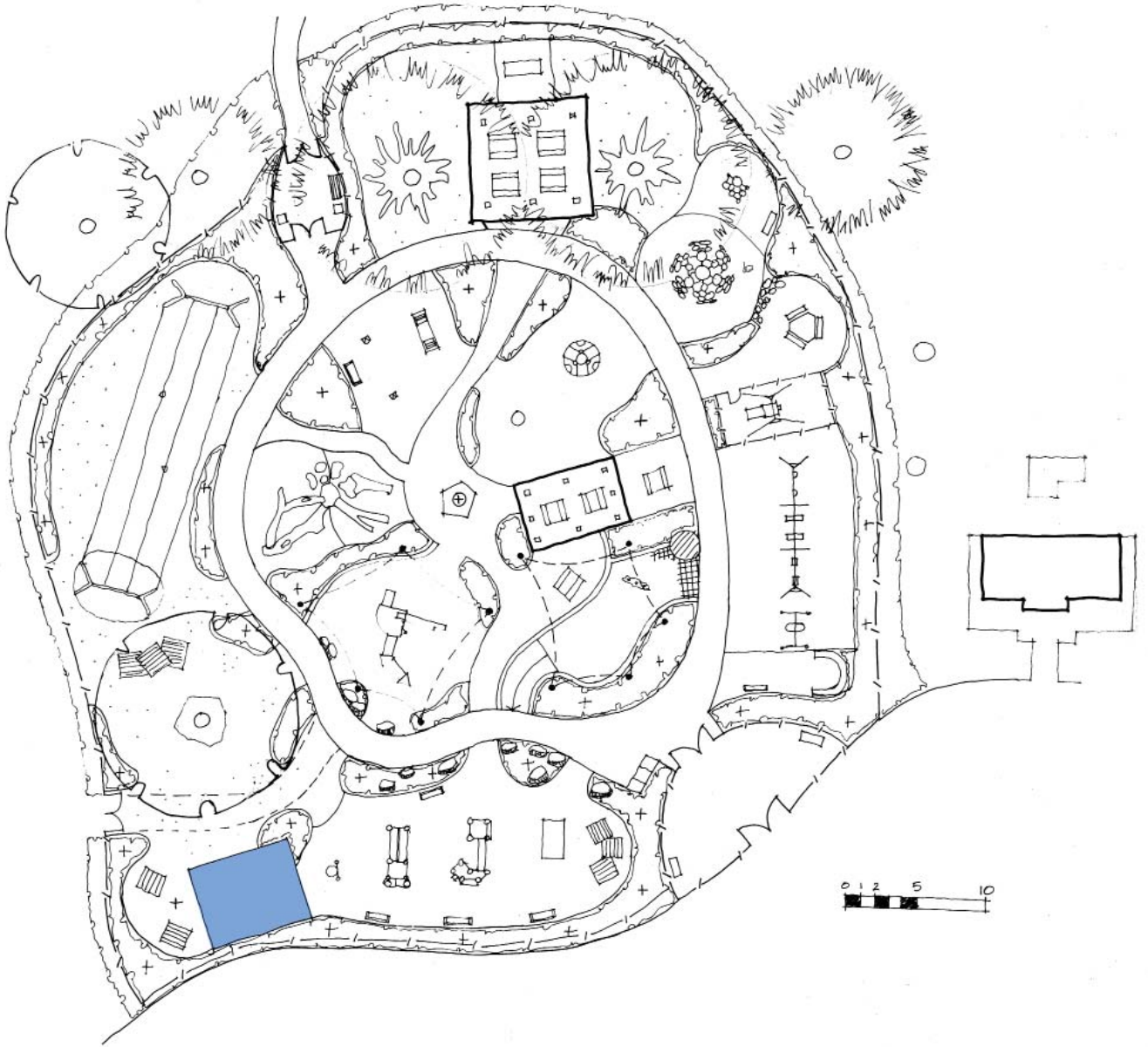
14



INFORMAL SPORT AND GAMES

Ping pong tables and ball toss towers provide valuable ball based games. Ball toss towers are offered at various heights. Hopscotch and floor games can be introduced.





EXISTING EXERCISE EQUIPMENT

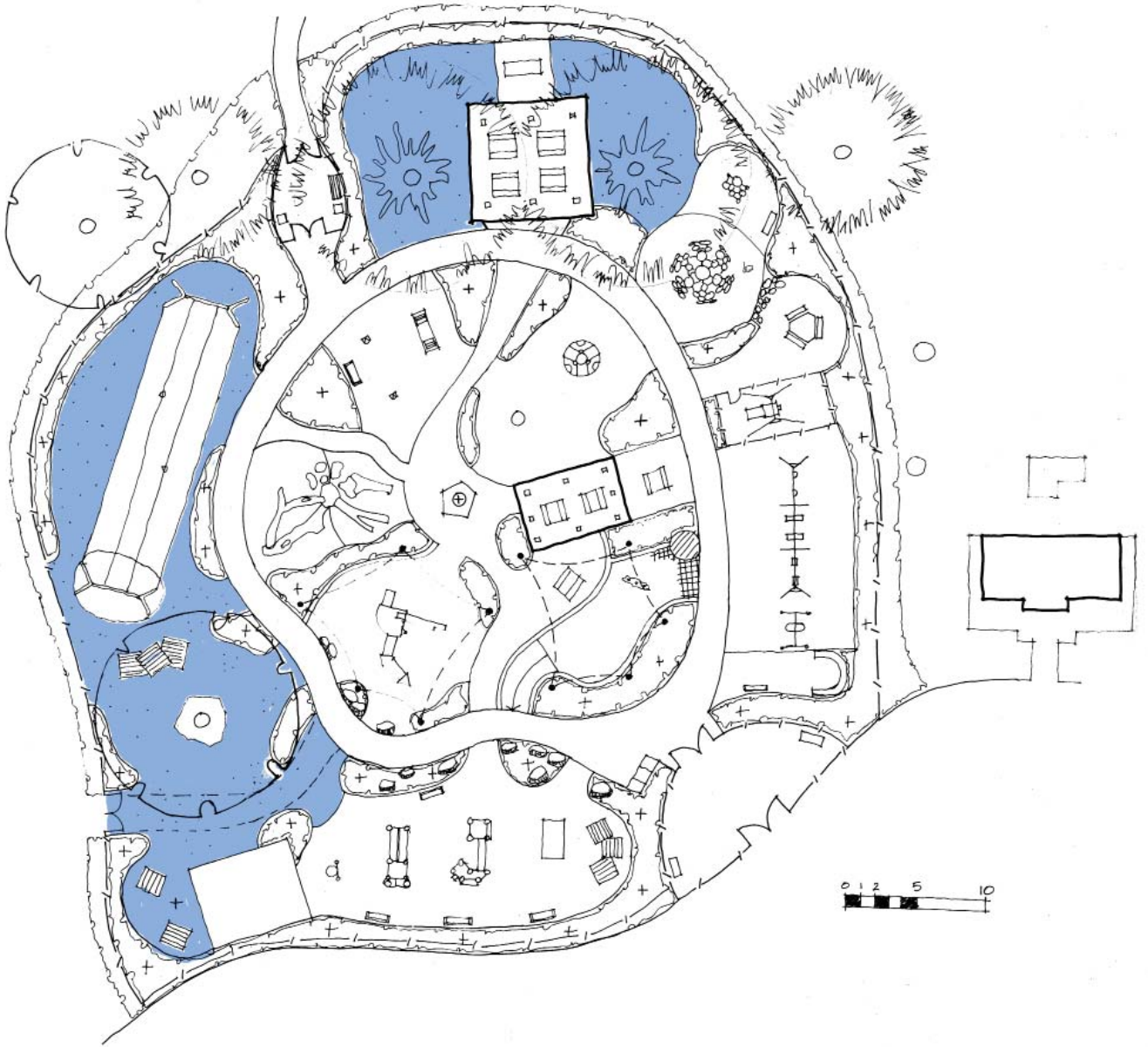
15



EXISTING EXERCISE EQUIPMENT

Existing equipment provides a range of exercise possibilities.
Exercise focuses on cardio, muscular, and strength fitness.

15



GRASSED AREAS

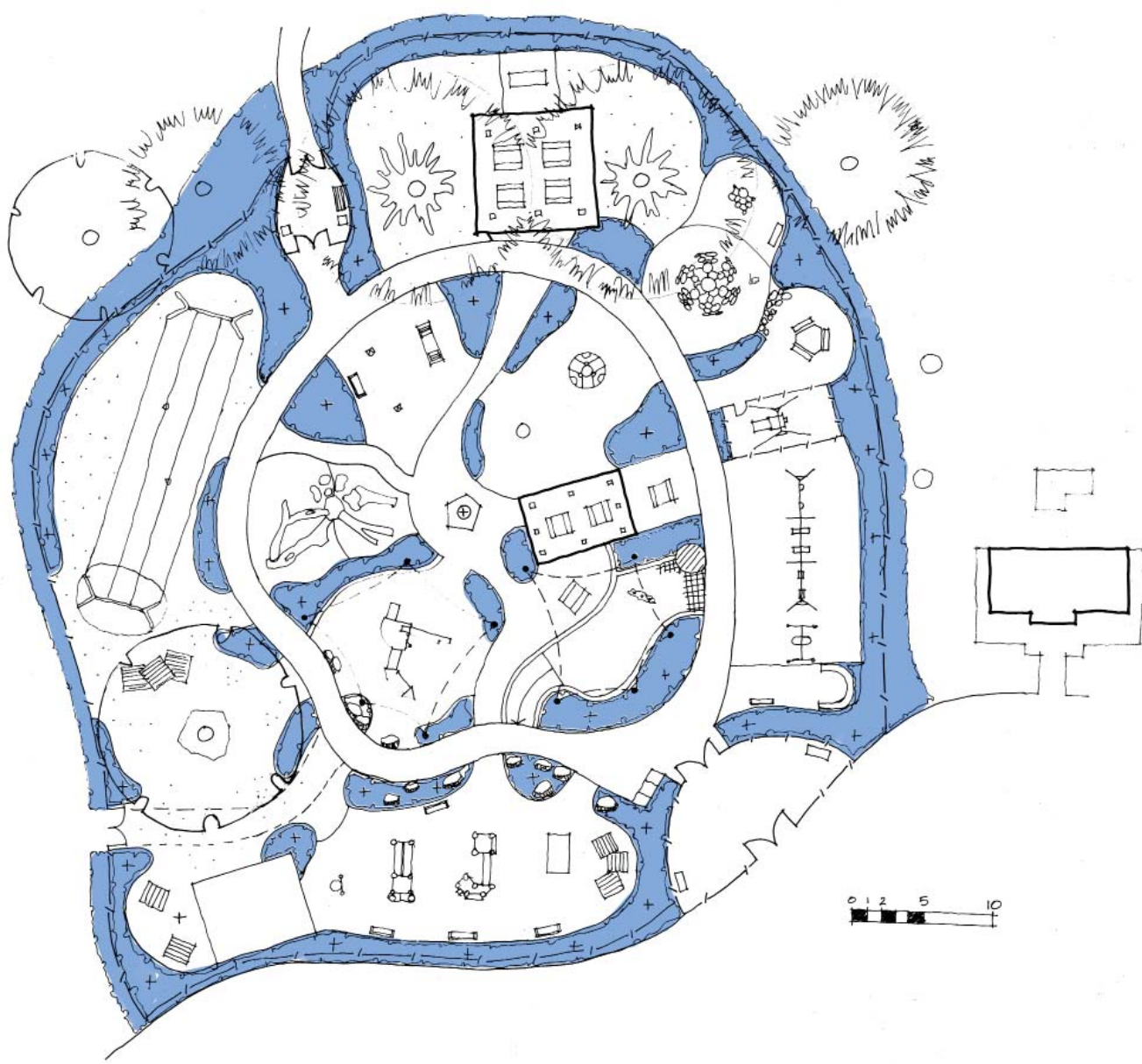
16



GRASSED AREAS

Grassed areas provide informal picnic areas, as well as informal ball games. Grassy spaces are invaluable as 'chillout' spaces.

16



GARDEN BEDS

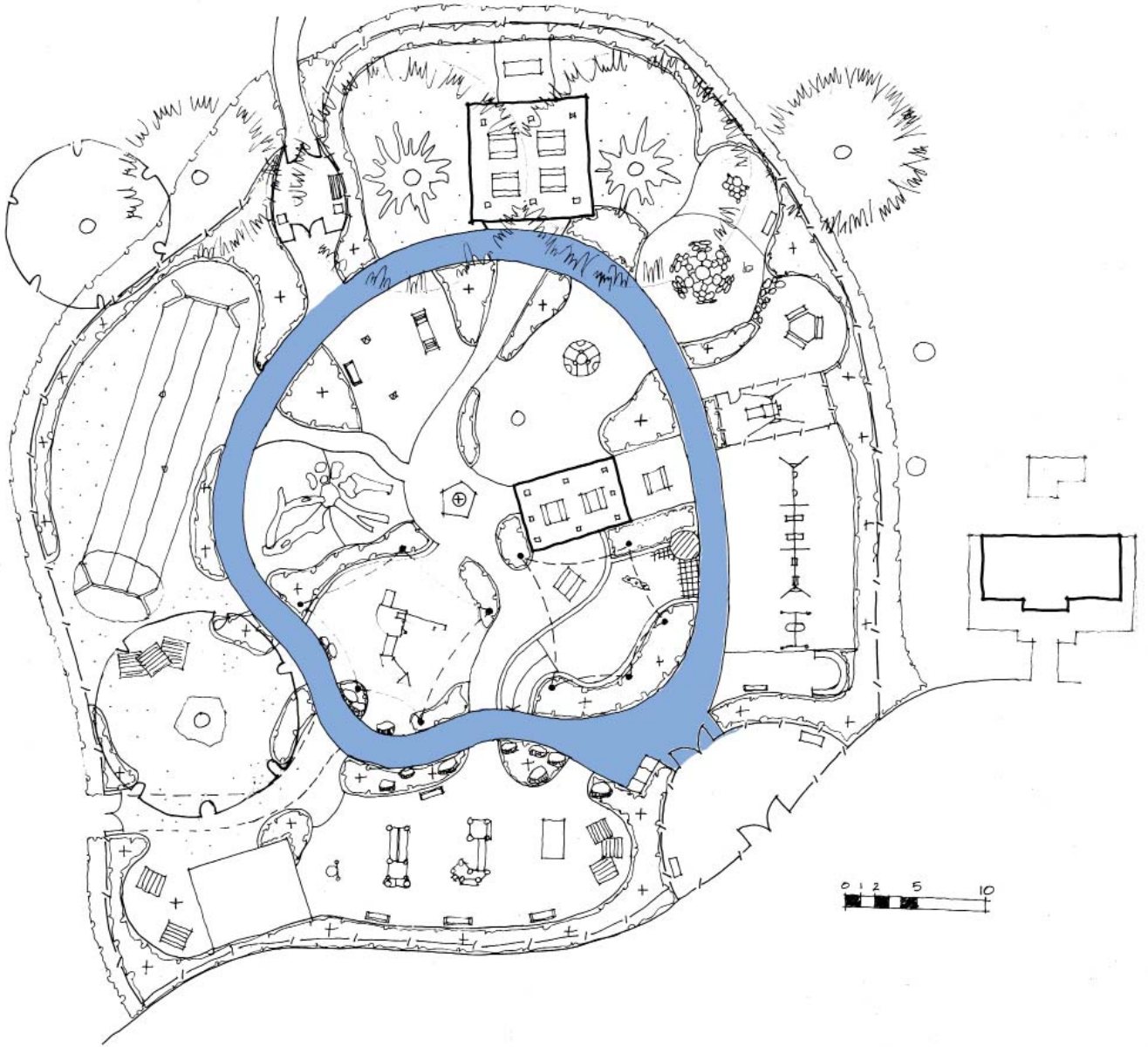




GARDEN BEDS

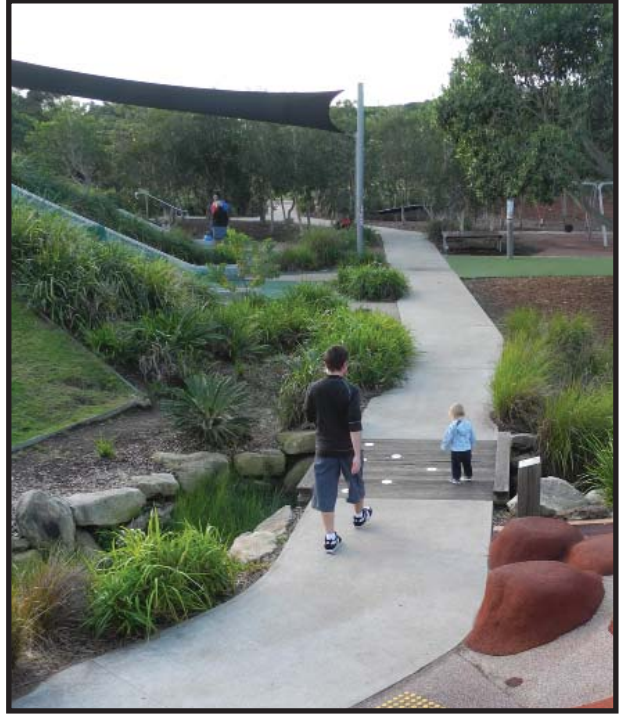
Garden beds separate different pods of play.
Plants provide sensory play + loose parts play.
Sightlines are retained (low planting only).





BIKE TRACK / PATHS

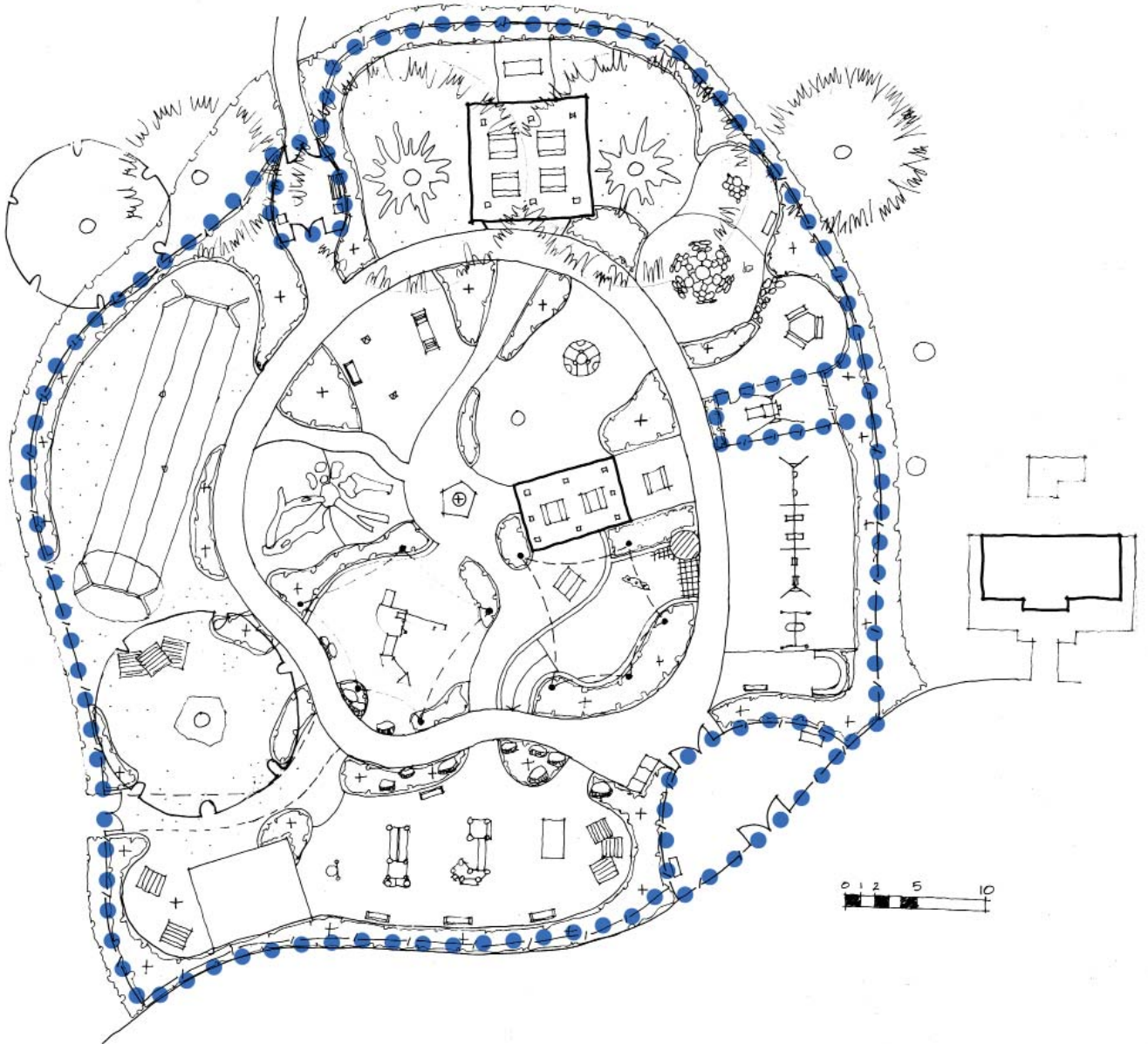
18



BIKE TRACK / PATHS

Wide, looped path provides a good surface for bike and trike riding.
Complements exterior bike track.





FENCING

19



FENCING

Inclusive play areas require a perimeter fence (minimum 1.2m in height)

Pedestrian gates are provided at key entry points

'Airlock' entry areas provide transition spaces

Maintenance gates are strategically placed

Fencing panels must allow clear vision into the playground

