

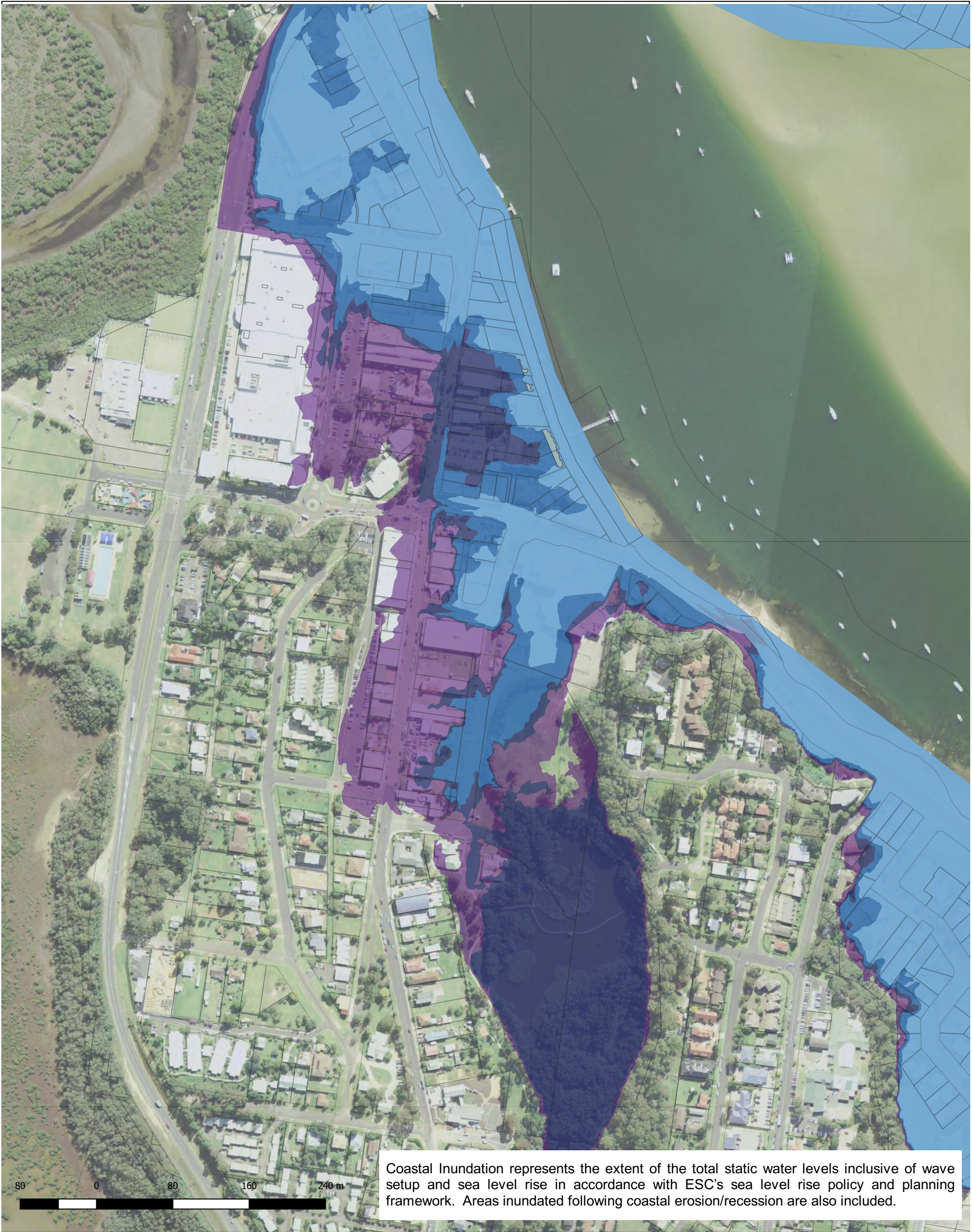






Coastal Inundation represents the extent of the total static water levels inclusive of wave setup and sea level rise in accordance with ESC's sea level rise policy and planning framework.









Coastal Inundation represents the extent of the total static water levels inclusive of wave setup and sea level rise in accordance with ESC's sea level rise policy and planning framework.





Coastal Inundation represents the extent of the total static water levels inclusive of wave setup and sea level rise in accordance with ESC's sea level rise policy and planning framework.



