

**LOCAL TRAFFIC COMMITTEE
MEETING MINUTES**

Meeting No:	7-24/25	File No	S030-T00018
Date:	Thursday 8 May 2025	Time:	9:30am
Location:	Eurobodalla Shire Council – Glass Meeting Room		

ATTENDANCE

The Eurobodalla Local Traffic Committee Meeting No 7 for 2024-25 was held on 8 May 2025. The meeting was attended by Councillor Laurence Babington (Chair), Daniel Weekes (Traffic Coordinator), Thomas Franzen (ESC Division Manager, Technical Services), Donna Binns (Transport for NSW), Kelly-Ann Marshall (ESC Surveillance Officer) Senior Sgt Angus Duncombe (NSW Police), Katherine Buttsworth (ESC Road Safety Officer) and Alyshia Peters (ESC Asset Inspector).

APOLOGIES

Geoff Armstrong (ESC Design Coordinator), Scott McNairn (ESC Events Coordinator), Brad Ross (Transport for NSW), Member for Bega Representative, Chief Inspector John Sheehan (NSW Police), James Thompson (ESC Transport and Stormwater Engineer), Senior Sgt Scott Britt (NSW Police), Saurav Subedi (ESC A/g Maintenance Planning Officer).

ITEM 4 - OUTSTANDING ITEMS

2025.RT.005.362 -Broulee Road, Broulee RM347969/25

2025.RT.005.363 -Broulee Road, Broulee RM347971/25

2025.RT.004.364 -Annett Street, Mogo RM347974/25

2025.RT.008.365 -George Bass Drive, Malua Bay RM347981/25

2025.RT.008.366 -George Bass Drive, Malua Bay RM347984/25

2025.RT.010.368 -Deep Creek Dam, Mogo Trails Botanic Garden Carpark RM347989/25

2025.RT.010.369 -Deep Creek Dam, Mogo Trails Botanic Garden Carpark RM347991/25

2025.RT.009.367 – Train Street, Broulee – RM347986/25

ROAD TRANSPORT (SAFETY & TRAFFIC MANAGEMENT) ACT ITEMS FOR DETERMINATION**5.1 2025.RT.023 - On Street Parking Pacific Street, Batemans Bay – 2 Hour Timed Parking****RECOMMENDATION**

That Council Plan 5490-V-01 to install signs for two hour timed on street parking in Pacific Street, Batemans Bay, be approved.

BACKGROUND

Council has been contacted by the Department of Health regarding impending construction work at the Batemans Bay hospital. A large amount of onsite hospital car parking spaces will be unavailable for the duration of the project, which will run for approximately 9-12 months. The Department was concerned that staff would simply move to the untimed on-street parking impacting hospital visitors. Timed on street parking will benefit hospital visitors by increasing

**LOCAL TRAFFIC COMMITTEE
MEETING MINUTES**

Meeting No:	7-24/25	File No	S030-T00018
Date:	Thursday 8 May 2025	Time:	9:30am
Location:	Eurobodalla Shire Council – Glass Meeting Room		

turnover of parking spaces. The installation of two hour timed spaces aligns with similar parking arrangements at the nearby Moruya hospital.

CONCLUSION

Approval will enable placement of the two hour timed parking signs and increase parking space turnover for hospital patients and visitors.

5.2 2025.RT.024 - Wallarah Street, Surfside – Give Way Sign and Line Marking**RECOMMENDATION**

That Council Plan 5490-W-01 to install Give Way signage and Line Marking for Wallarah Street, Surfside, be approved.

BACKGROUND

Council recently resurfaced Wallarah Street, Surfside. This work has provided Council with an opportunity to formalise this intersection and improve safety with the installation of a 'Give Way' sign and associated line marking. Wallarah Street is classified in the Eurobodalla Shire as a 'Local Road' and has an AADT of 630 vehicles.

CONCLUSION

Approval will enable the installation of 'Give Way' signage and associated line marking formalising the intersection and improving safety.

ITEM 6 - INFORMAL ITEMS FOR DISCUSSION

No Items

ITEM 7 – GENERAL BUSINESS**Train Street and George Bass Drive intersection**

Train Street and George Bass Drive intersection was noted as a consistent point of traffic congestion and driver frustration by Senior Sgt Angus Duncombe (NSW Police).

It was suggested that a dedicated left turn lane be established west from Train Street into the intersection with George Bass Drive. Queue lengths at this location are quite extensive at school drop off and pick up times. There are also complaints of vehicles mounting the kerb and gutter to get around queued traffic.

Council is aware of the issue; the ideal solution being a roundabout to allow the efficient flow of traffic and create traffic calming along with opportunities for cyclists and pedestrians to cross the road. This is identified within Council's Northern Area Transport Network Plan.

**LOCAL TRAFFIC COMMITTEE
MEETING MINUTES**

Meeting No:	7-24/25	File No	S030-T00018
Date:	Thursday 8 May 2025	Time:	9:30am
Location:	Eurobodalla Shire Council – Glass Meeting Room		

Council has advocated for State and Federal Government funding, seeking support from local Members and alike for the required funds/grants to allow the works to happen. However, there has been no announcement made to date. Support from NSW Police and Transport for NSW would further assist in securing the required funding. Funding is difficult to secure at this location under existing grant programs, as this would be classed as proactive funding with no significant history of crashes at this location.

It was also noted the St Peters Anglican College have plans to develop a separate bus lane which would run parallel to George Bass Drive. This would allow for school bus and parents dropping off and collecting children, along with a separate exit only lane to the east for vehicles travelling within the village, and is associated with their Development Application which may help to reduce the congestion within the intersection.

It was also noted that Carroll College is starting to investigate the option of a pedestrian crossing at the school creating further development along the George Bass Drive school precinct.

It was also noted that the Broulee Road/George Bass Drive Roundabout is currently under construction with the eastern leg recently being re-opened to traffic. This should take some pressure off the Train Street intersection.

ITEM 8 – DEVELOPMENT APPLICATIONS**8.1 2025.RT.024 - Driftwood Shores. Anderson Ave, Tuross Head.****RECOMMENDATION**

That submitted Plan U18465-B-51 to install Give Way signage and associated Line Marking for Stage 1 of Driftwood Shores subdivision, Tuross Head, be approved.

BACKGROUND

Driftwood Shores is located in the northern area of Tuross Head adjacent to Coila Lake. The subdivision was originally approved for 61 lots in 1984. Since then, there have been further modifications and a new DA, which has increased the lot yield to 94 over four stages. Construction commenced in early 2024 and is expected to be completed towards the end of 2025.

CONCLUSION

Approval will enable the installation of 'Give Way' signage and associated Line Marking prior to the release of Stage 1 of the subdivision.

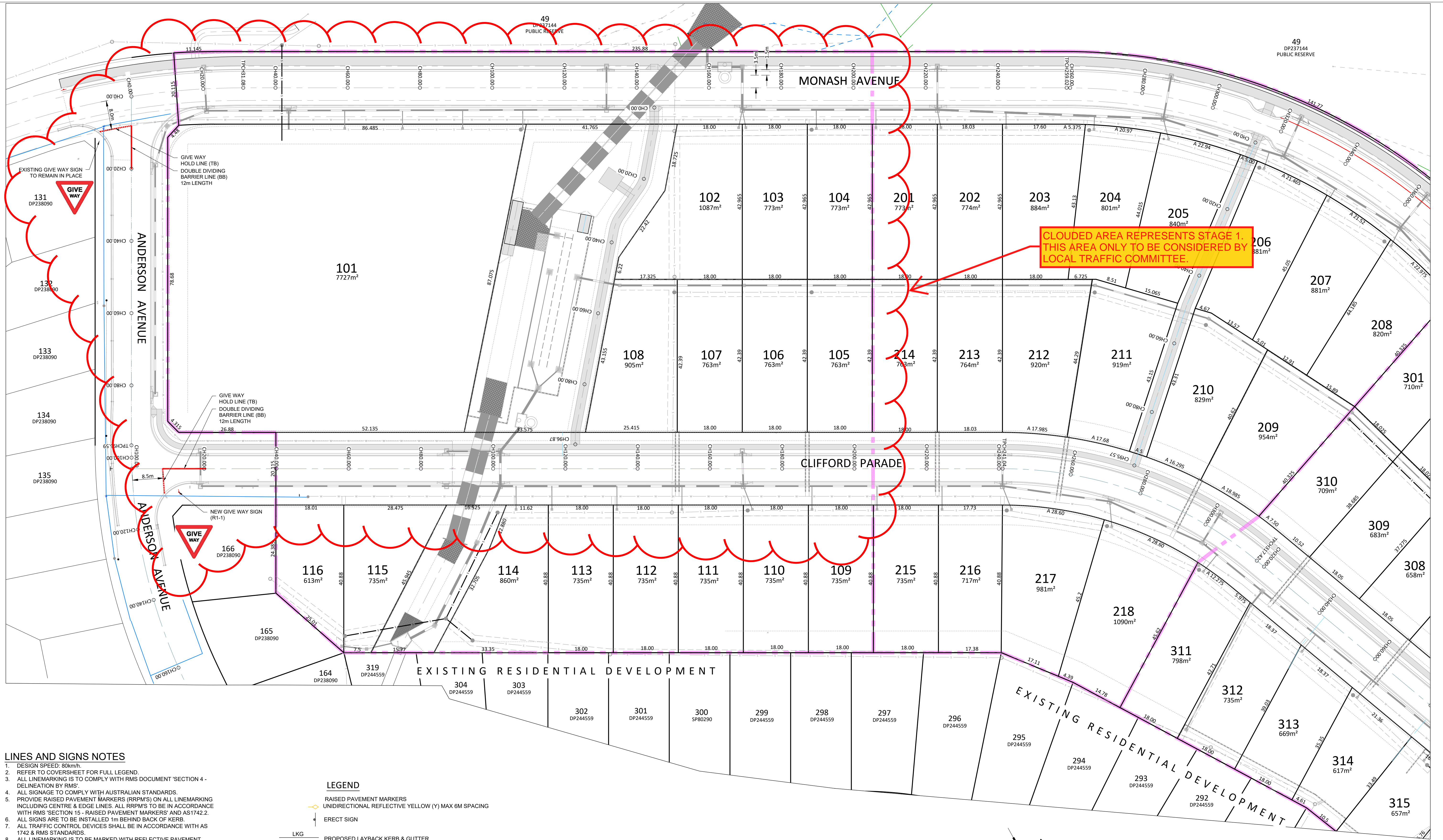
ITEM 9 – NEXT MEETING

12 June 2025



File No(s). NA	Datum AHD - GDA2020	Reduction Ratio @ Scale 1:250 12.5 25m	Checked Geoff Armstrong Design Coordinator Technical Services Date DD/MM/YYYY	Reviewed Thomas Franzen Divisional Manager Technical Services Date DD/MM/YYYY	Amendment Details A	By Appd Date		Batemans Bay Pacific St Two hour timed parking	Project No. 5490
Job Number NA	Survey No(s). 0								Set V
Cad Reference .dwg	Surveyed NA				Development Approval NOT Required				Amendment





LINES AND SIGNS NOTES

- DESIGN SPEED: 80km/h.
- REFER TO COVERSHEET FOR FULL LEGEND.
- ALL LINEMARKING IS TO COMPLY WITH RMS DOCUMENT 'SECTION 4 - DELINEATION BY RMS'.
- ALL SIGNAGE TO COMPLY WITH AUSTRALIAN STANDARDS.
- PROVIDE RAISED PAVEMENT MARKERS (RRPMs) ON ALL LINEMARKING INCLUDING CENTRE & EDGE LINES. ALL RRPMs TO BE IN ACCORDANCE WITH RMS 'SECTION 15 - RAISED PAVEMENT MARKERS' AND AS1742.2.
- ALL SIGNS ARE TO BE INSTALLED 1m BEHIND BACK OF KERB.
- ALL TRAFFIC CONTROL DEVICES SHALL BE IN ACCORDANCE WITH AS 1742 & RMS STANDARDS.
- ALL LINEMARKING IS TO BE MARKED WITH REFLECTIVE PAVEMENT MARKING PAINT.
- ALL SIGN POSTS ARE TO BE INSTALLED WITH A "V-LOCK INSERT".
- ALL REGULATORY SIGNS TO BE "B" SIZE UNLESS SHOWN OTHERWISE.

LEGEND

- RAISED PAVEMENT MARKERS
- UNIDIRECTIONAL REFLECTIVE YELLOW (Y) MAX 6M SPACING
- ERECT SIGN

- LKG PROPOSED LAYBACK KERB & GUTTER
- K&G PROPOSED STANDARD KERB & GUTTER

- E5 EDGE LINE - CONTINUOUS 100mm WIDE LINE MARKING
- BB SINGLE BARRIER LINE - CONTINUOUS 100mm WIDE LINE MARKING
- BB DOUBLE BARRIER LINE - CONTINUOUS 100mm WIDE LINE MARKING (100mm SPACE)
- C1 CONTINUITY LINE - DASHED 150mm WIDE LINE MARKING

NOTES:

- REFER TO SHEET 1 "TITLE SHEET" FOR DETAILED LEGEND AND NOTES.
- BOUNDARIES AND IMPROVEMENTS HAVE BEEN LOCATED WITH APPROXIMATE ACCURACY FOR THE PURPOSE OF THIS SURVEY.
- RELATIONSHIPS OF IMPROVEMENTS TO BOUNDARIES FOR FINANCIAL OR ANY OTHER PURPOSES SHOULD BE CONFIRMED BY FURTHER SURVEY BY A REGISTERED SURVEYOR.
- THE LOCATION OF UNDERGROUND SERVICES BETWEEN LOCATING MARKS SHOWN ON THIS PLAN IS INDICATIVE ONLY.
- IT IS YOUR (CONTRACTORS) RESPONSIBILITY TO LOCATE UNDERGROUND SERVICES BY CAREFUL HAND POT-HOLING PRIOR TO ANY EXCAVATION AND EXERCISE DUE CARE DURING THAT EXCAVATION.

REDUCTION RATIO: 1:500			AMENDMENTS	BY	DATE
DATUM : AUSTRALIAN HEIGHT DATUM	SURVEYED LG	REV A - ISSUED TO COUNCIL FOR APPROVAL (SWC)	JA	CP	27/02/24
CONTOUR INTERVAL : 0.5 M	DESIGNED JA	REV B - REMOVED E1 & S1 LINES			10/04/25
ORIGIN OF LEVELS : SSM90209	DRAWN JA				
RL: 4.957	CHECKED PS				
DATE OF PLAN : 27/02/2024					

RYGATE & WEST
INCORPORATING BULLOCK & WALTERS
SINCE 1893
P.O. BOX 107, 266 GREEN STREET ULLADULLA NSW 2539
P.O. BOX 346, SUITE 6, 30 ORIENT STREET BATEMANS BAY NSW 2536
mail@rygateandwest.com.au
02 44542137



TUROSS HEAD - STAGES 1 TO 3
CIVIL ENGINEERING WORKS - ROAD & DRAINAGE
SIGNAGE & LINEMARKING LAYOUT PLAN - SHEET 1 OF 2 (SOUTH)
OVER LOT 325 DP244559
TUROSS HEAD SHIRE OF EUROBODALLA

REFERENCE No. U18465-A (R & D)
DRAWING No. U18465-A_ENG RD.dwg
ISSUE B
SHEET 51 OF 52 SHEETS



PLAN
RR 1: 500
ISSUED FOR APPROVAL
TO COUNCIL FOR SWC