

Appendix A Figures

LEGEND

- Borefield
- Big Rock Reservoir
- Existing Water Treatment Plant
- - Existing WTP to Big Rock Reservoir
- - Existing Borefield to Existing WTP

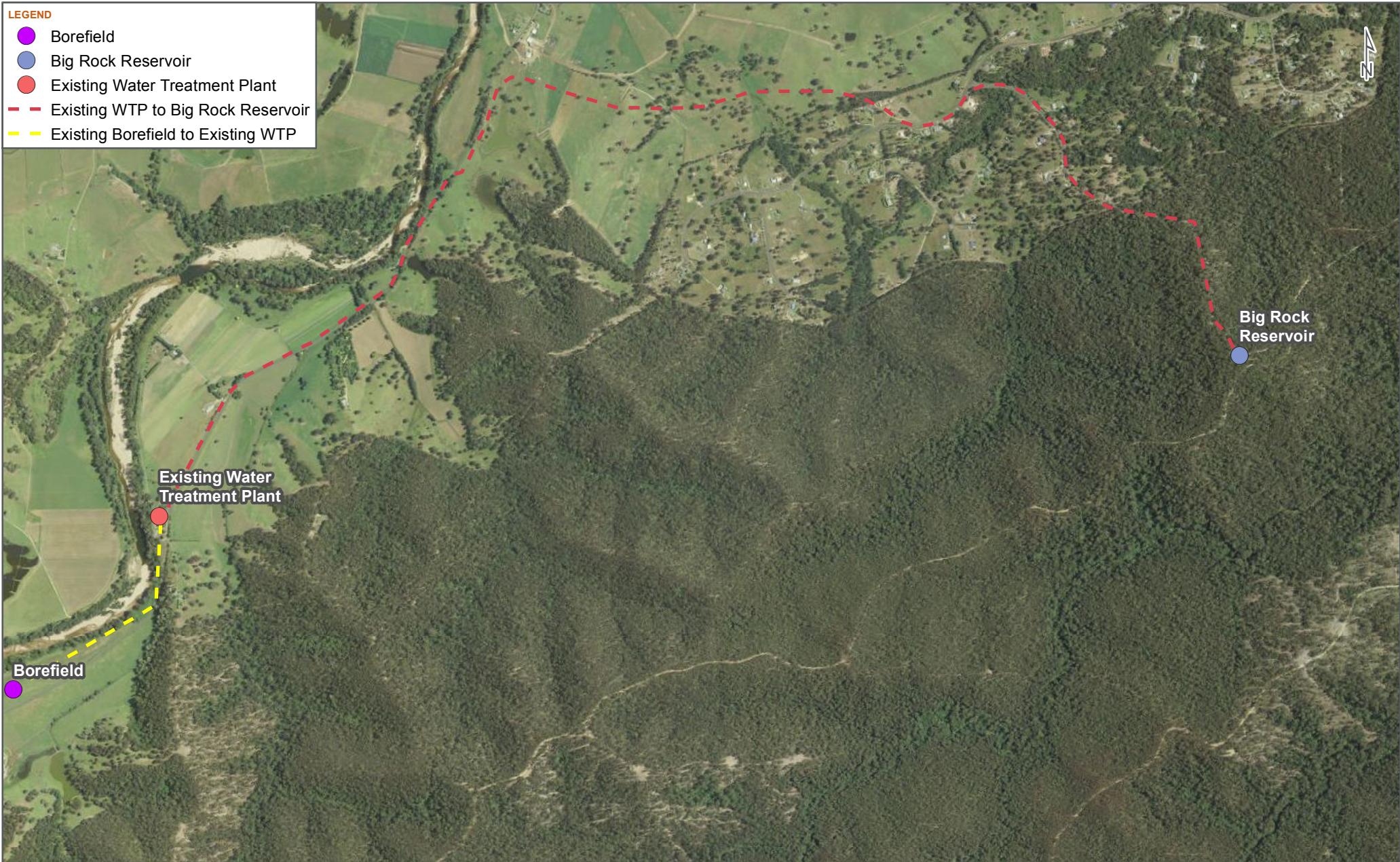


FIG NO. A-1 FIGURE TITLE Existing Infrastructure	DATE 08/02/2017		PAGE SIZE A4	COORDINATE SYSTEM GDA 1994 MGA Zone 56	<small>© SMEC Australia Pty Ltd 2017. All Rights Reserved Disclaimer: While all reasonable care has been taken to ensure the information contained on this map is up to date and accurate, this map contains data from a number of sources - no warranty is given that the information contained on this map is free from error or omission. Any reliance placed on such information shall be at the sole risk of the user. Please verify the accuracy of all information prior to using it. This map is not a design document.</small>
PROJECT NO. 30012127 PROJECT TITLE Eurobodalla Southern Storage	CREATED BY RC10721		SOURCES public_NSW_Imagery: © Land and Property Information 2015		



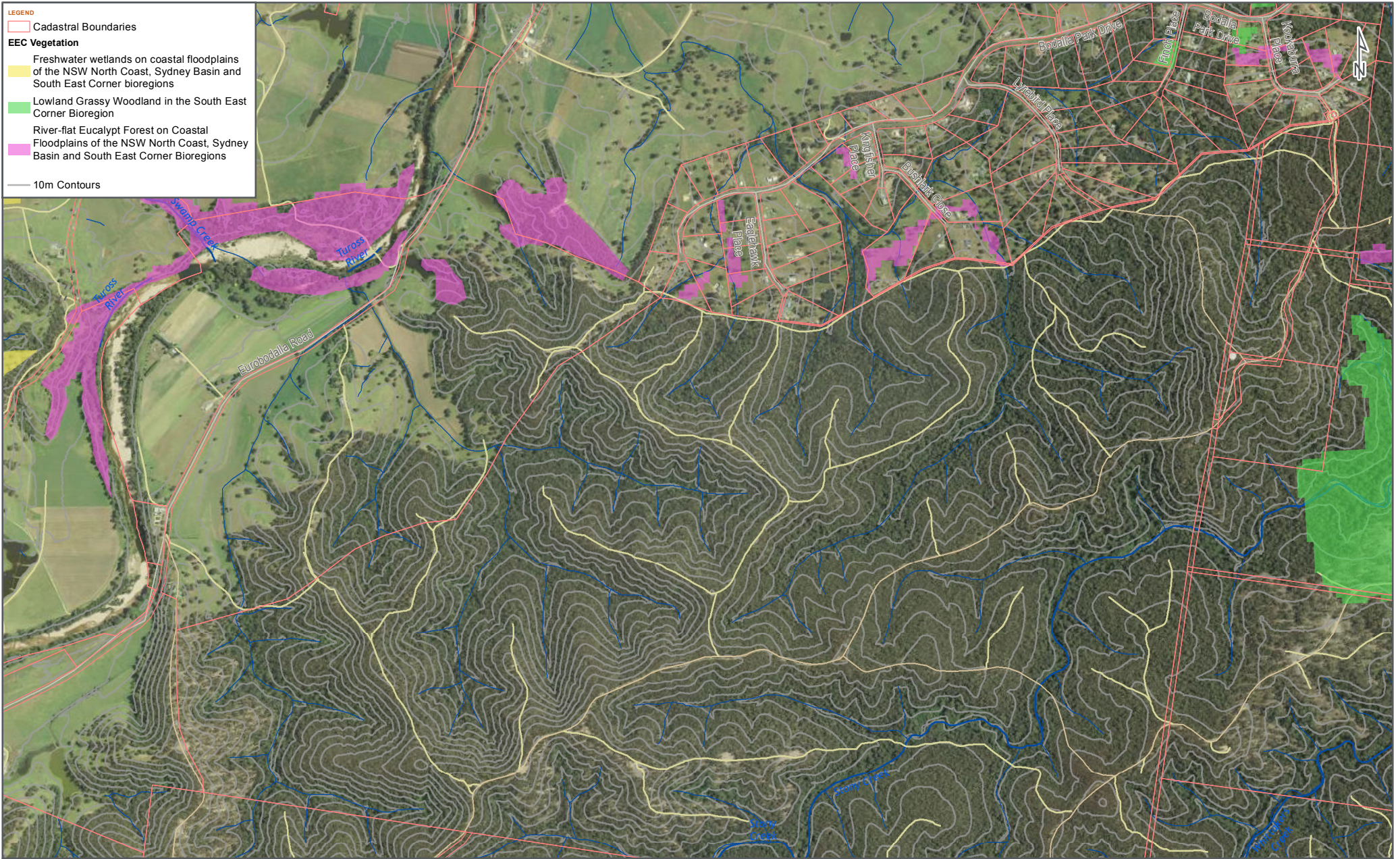


FIG NO. A-2	FIGURE TITLE Constraints Map	DATE 08/02/2017		PAGE SIZE A4	COORDINATE SYSTEM GDA 1994 MGA Zone 56	© SMEC Australia Pty Ltd 2017. All Rights Reserved. <small>Disclaimer: While all reasonable care has been taken to ensure the information contained on this map is up to date and accurate, this map contains data from a number of sources - no warranty is given that the information contained on this map is free from error or omission. Any reliance placed on such information shall be at the sole risk of the user. Please verify the accuracy of all information prior to using it. This map is not a design document.</small>
PROJECT NO. 30012127	PROJECT TITLE Eurobodalla Southern Storage	CREATED BY RC10721	SOURCES public_NSW_Imagery: © Land and Property Information 2015			

LEGEND

- Future WTP 1
- Future WTP 2
- Future WTP 3
- Future WTP 4



<p>FIG NO. A-3 FIGURE TITLE WTP Location Options</p>	<p>DATE 10/02/2017</p>	<p>PAGE SIZE A4</p>	<p>COORDINATE SYSTEM GDA 1994 MGA Zone 56</p>	<p>© SMEC Australia Pty Ltd 2017. All Rights Reserved</p> <p><small>Disclaimer: While all reasonable care has been taken to ensure the information contained on this map is up to date and accurate, this map contains data from a number of sources - no warranty is given that the information contained on this map is free from error or omission. Any reliance placed on such information shall be at the sole risk of the user. Please verify the accuracy of all information prior to using it. This map is not a design document.</small></p>
<p>PROJECT NO. 30012127 PROJECT TITLE Eurobodalla Southern Storage</p>	<p>CREATED BY RC10721 SOURCES public_NSW_Imagery: © Land and Property Information 2015</p>			

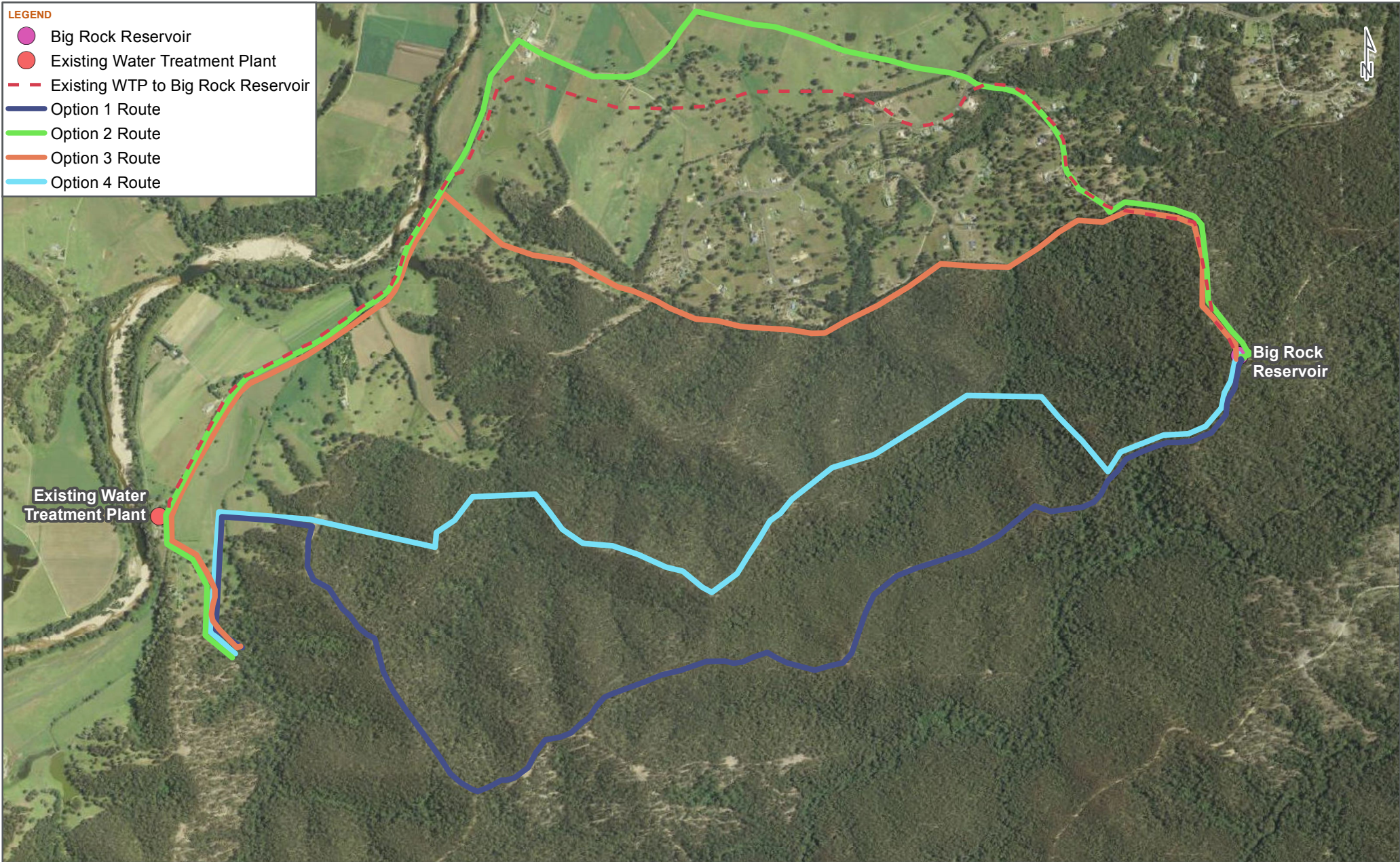








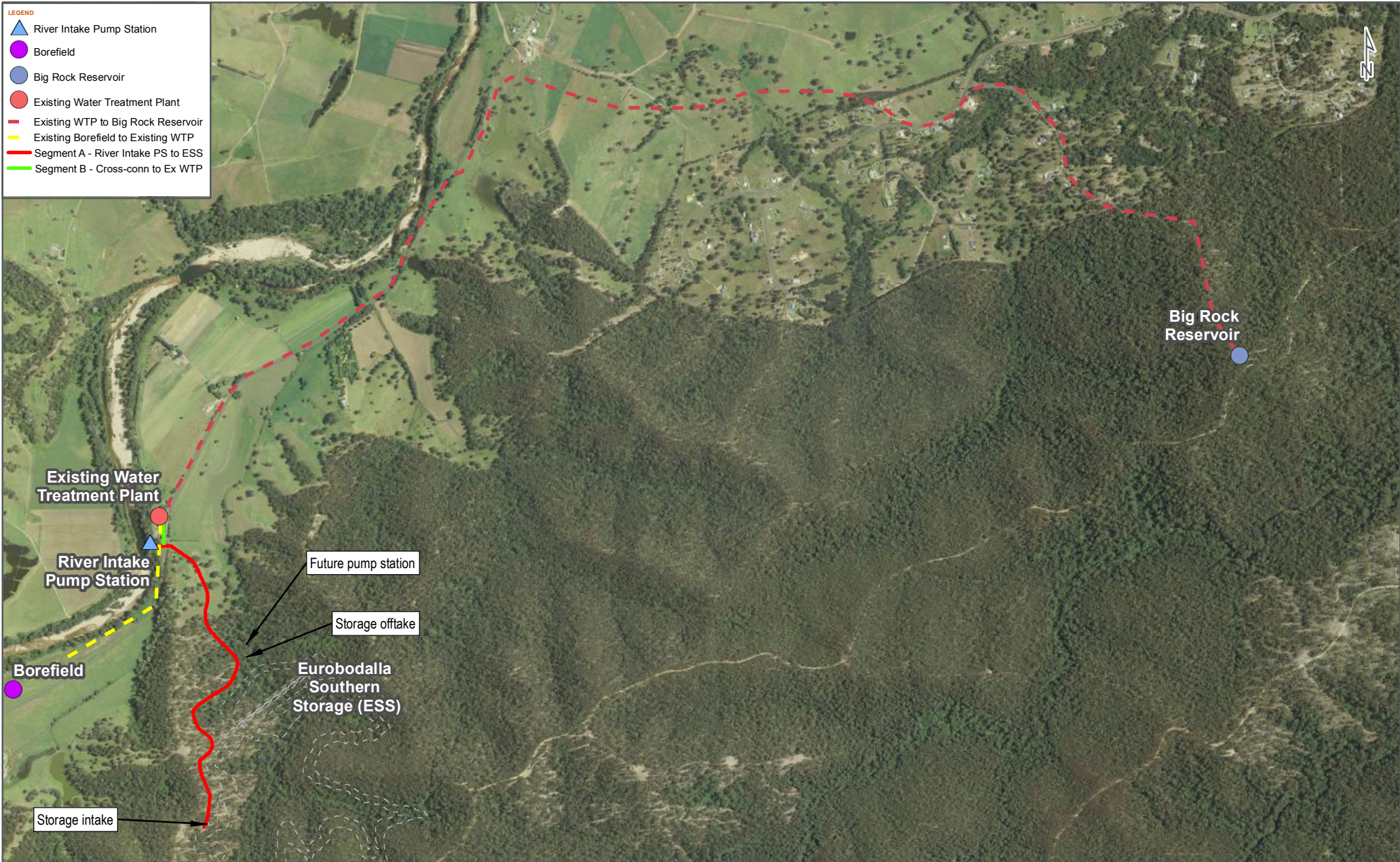
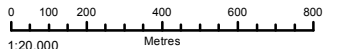












FIG NO. A-4	FIGURE TITLE Pipeline Alignment Options	DATE 13/02/2017		PAGE SIZE A4	COORDINATE SYSTEM GDA 1994 MGA Zone 56	© SMEC Australia Pty Ltd 2017. All Rights Reserved <small>Disclaimer: While all reasonable care has been taken to ensure the information contained on this map is up to date and accurate, this map contains data from a number of sources - no warranty is given that the information contained on this map is free from error or omission. Any reliance placed on such information shall be at the sole risk of the user. Please verify the accuracy of all information prior to using it. This map is not a design document.</small>
PROJECT NO. 30012127	PROJECT TITLE Eurobodalla Southern Storage	CREATED BY RC10721	SOURCES public_NSW_Imagery: © Land and Property Information 2015			

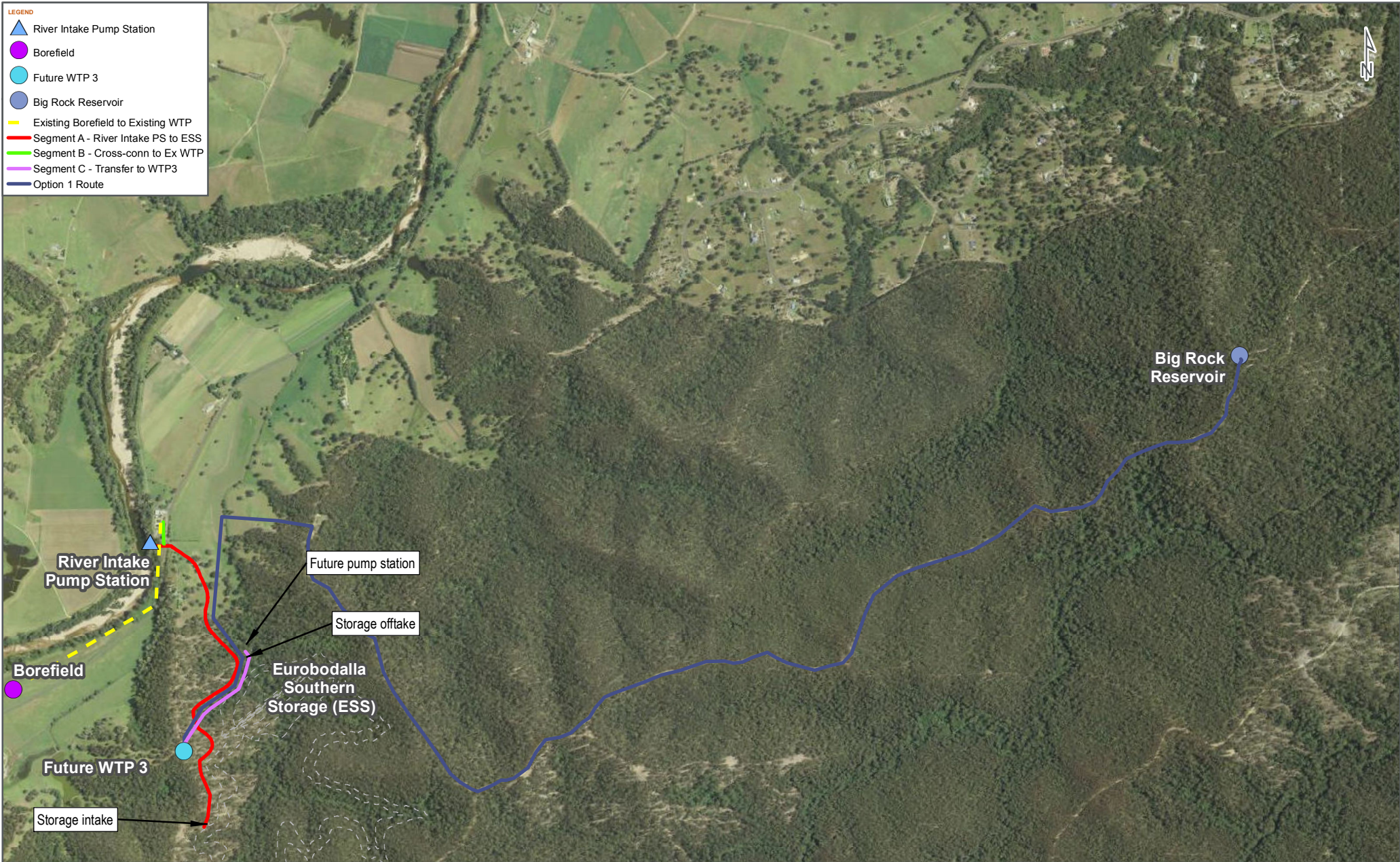
- LEGEND**
-  River Intake Pump Station
 -  Borefield
 -  Big Rock Reservoir
 -  Existing Water Treatment Plant
 -  Existing WTP to Big Rock Reservoir
 -  Existing Borefield to Existing WTP
 -  Segment A - River Intake PS to ESS
 -  Segment B - Cross-conn to Ex WTP

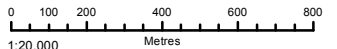


<p>FIG NO. A-5</p>	<p>FIGURE TITLE Proposed Infrastructure Stage 1 (Year 2017)</p>	<p>DATE 13/02/2017</p>		<p>PAGE SIZE A4</p>	<p>COORDINATE SYSTEM GDA 1994 MGA Zone 56</p>	<p>© SMEC Australia Pty Ltd 2017. All Rights Reserved</p> <p><small>Disclaimer: While all reasonable care has been taken to ensure the information contained on this map is up to date and accurate, this map contains data from a number of sources - no warranty is given that the information contained on this map is free from error or omission. Any reliance placed on such information shall be at the sole risk of the user. Please verify the accuracy of all information prior to using it. This map is not a design document.</small></p>
<p>PROJECT NO. 30012127</p>	<p>PROJECT TITLE Eurobodalla Southern Storage</p>	<p>CREATED BY RC10721</p>	<p>SOURCES public_NSW_Imagery: © Land and Property Information 2015</p>			

LEGEND

-  River Intake Pump Station
-  Borefield
-  Future WTP 3
-  Big Rock Reservoir
-  Existing Borefield to Existing WTP
-  Segment A - River Intake PS to ESS
-  Segment B - Cross-conn to Ex WTP
-  Segment C - Transfer to WTP3
-  Option 1 Route



<p>FIG NO. A-6</p>	<p>FIGURE TITLE Proposed Infrastructure Stage 2 (Year 2030) – OPTION 4</p>	<p>DATE 13/02/2017</p>		<p>PAGE SIZE A4</p>	<p>COORDINATE SYSTEM GDA 1994 MGA Zone 56</p>	<p>© SMEC Australia Pty Ltd 2017. All Rights Reserved</p> <p><small>Disclaimer: While all reasonable care has been taken to ensure the information contained on this map is up to date and accurate, this map contains data from a number of sources - no warranty is given that the information contained on this map is free from error or omission. Any reliance placed on such information shall be at the sole risk of the user. Please verify the accuracy of all information prior to using it. This map is not a design document.</small></p>
<p>PROJECT NO. 30012127</p>	<p>PROJECT TITLE Eurobodalla Southern Storage</p>	<p>CREATED BY RC10721</p>	<p>SOURCES public_NSW_Imagery: © Land and Property Information 2015</p>			