

APPENDIX B

MORUYA PARKING SURVEYS

Moruya Parking Types

1 hr	(94)
10 min	(2)
15 min	(5)
2 hr	(34)
Ambulance/Police	(7)
Disabled	(21)
School Drop Off Zone	(7)
School bus zone	(8)
Taxi	(3)
Unrestricted	(872)



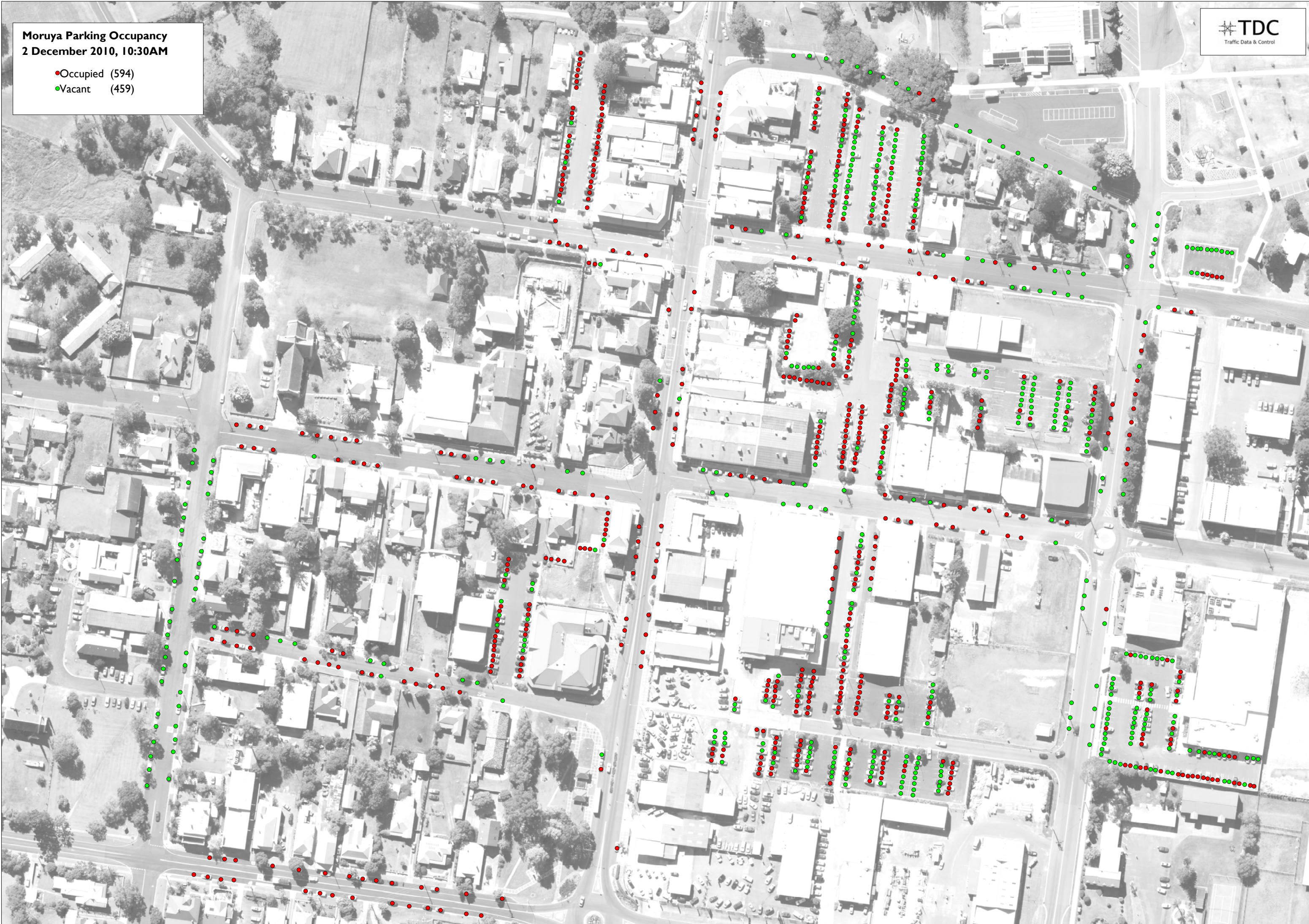
Moruya Parking Occupancy
2 December 2010, 10:00AM

- Occupied (603)
- Vacant (450)



Moruya Parking Occupancy
2 December 2010, 10:30AM

- Occupied (594)
- Vacant (459)



Moruya Parking Occupancy
2 December 2010, 11:00AM

- Occupied (636)
- Vacant (417)



Moruya Parking Occupancy
2 December 2010, 11:30AM

- Occupied (639)
- Vacant (414)



Moruya Parking Occupancy
2 December 2010, 12:30PM

- Occupied (627)
- Vacant (426)



Moruya Parking Occupancy
2 December 2010, 13:00PM

- Occupied (627)
- Vacant (426)



Moruya Parking Occupancy
2 December 2010, 13:30PM

- Occupied (566)
- Vacant (487)



Moruya Parking Occupancy
2 December 2010, 14:00PM

- Occupied (562)
- Vacant (491)



Moruya Parking Occupancy
2 December 2010, 2:30PM

- Occupied (540)
- Vacant (512)



Moruya Parking Occupancy
2 December 2010, 3:00PM

- Occupied (536)
- Vacant (517)



Moruya Parking Occupancy
2 December 2010, 3:30PM

- Occupied (500)
- Vacant (553)



Moruya Parking Types

- 1 hr (94)
- 10 min (2)
- 15 min (5)
- 2 hr (34)
- Ambulance/Police (7)
- Disabled (21)
- School Drop Off Zone (7)
- School bus zone (8)
- Taxi (3)
- Unrestricted (872)



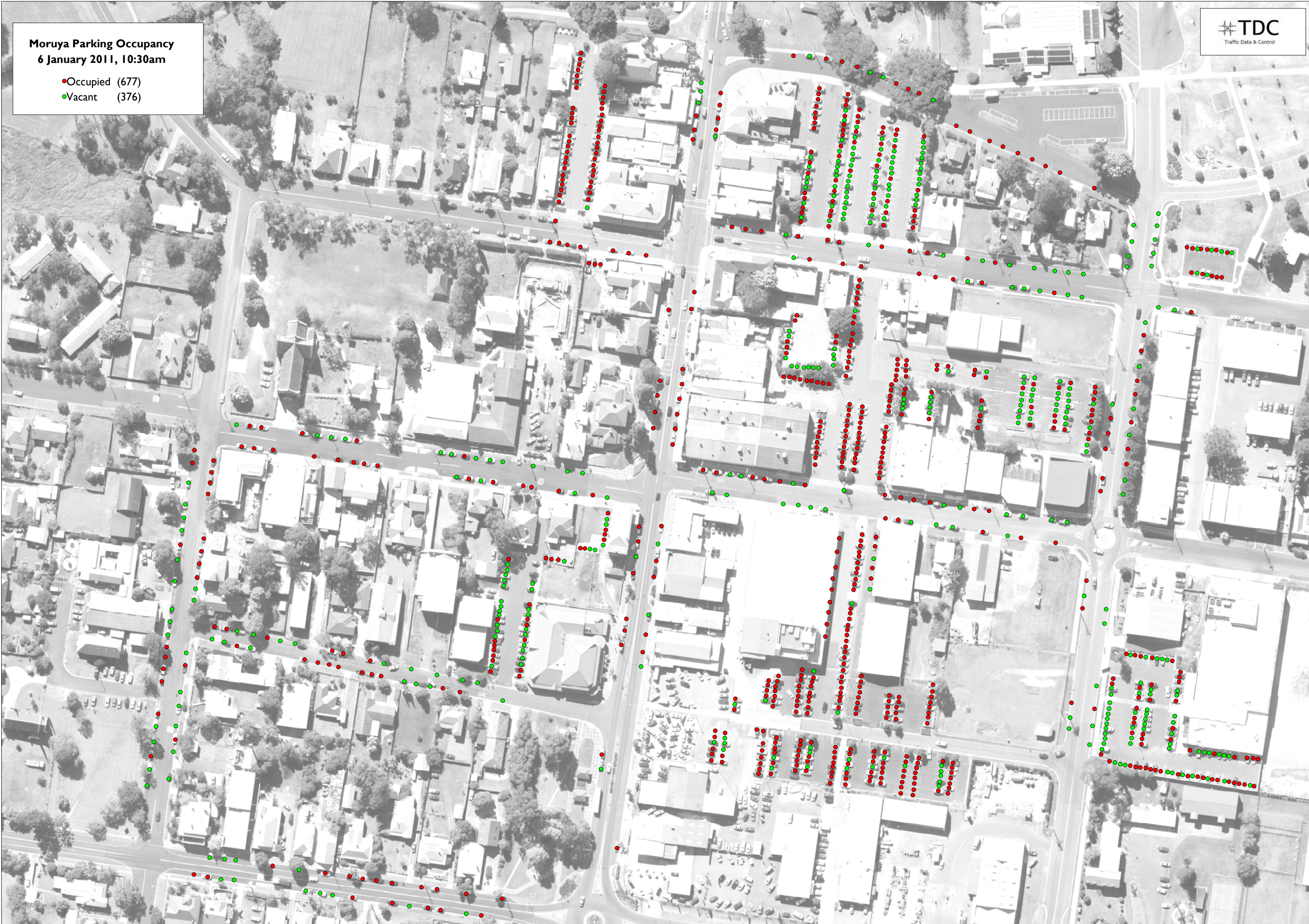
Moruya Parking Occupancy
6 January 2011, 10:00AM

- Occupied (640)
- Vacant (413)



Moruya Parking Occupancy
6 January 2011, 10:30am

● Occupied (677)
● Vacant (376)



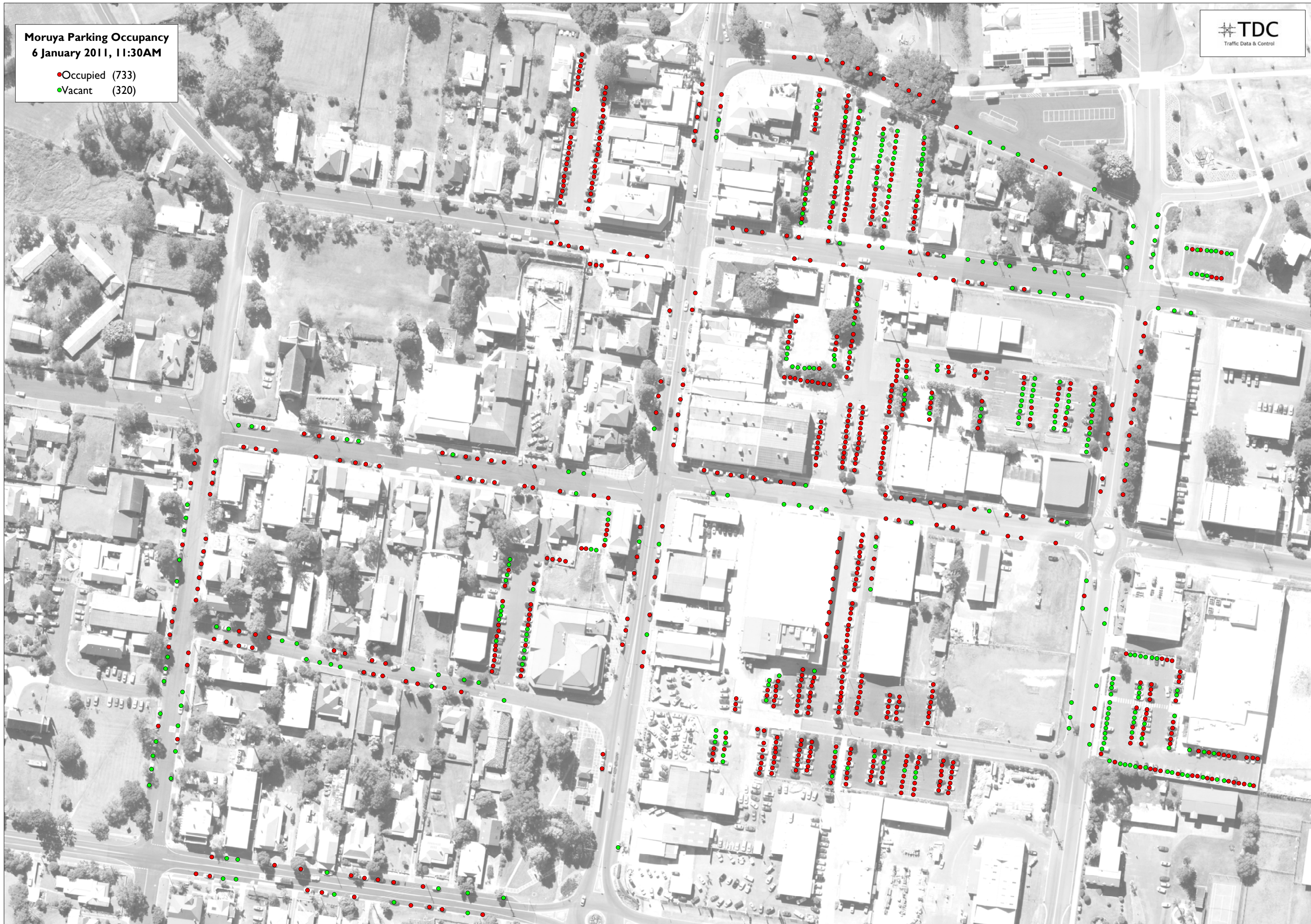
Moruya Parking Occupancy
6 January 2011, 11:00AM

- Occupied (706)
- Vacant (347)



Moruya Parking Occupancy
6 January 2011, 11:30AM

- Occupied (733)
- Vacant (320)



Moruya Parking Occupancy
6 January 2011, 12:00PM

- Occupied (736)
- Vacant (317)



Moruya Parking Occupancy
6 January 2011, 12:30PM

- Occupied (688)
- Vacant (365)



Moruya Parking Occupancy
6 January 2011, 1:00PM

- Occupied (660)
- Vacant (393)



Moruya Parking Occupancy
6 January 2011, 1:30PM

- Occupied (669)
- Vacant (384)



Moruya Parking Occupancy
6 January 2011, 2:00PM

- Occupied (688)
- Vacant (365)



Moruya Parking Occupancy
6 January 2011, 2:30PM

- Occupied (653)
- Vacant (400)



Moruya Parking Occupancy
6 January 2011, 3:00PM

- Occupied (615)
- Vacant (438)



Moruya Parking Occupancy
6 January 2011, 3:30PM

- Occupied (611)
- Vacant (442)



Moruya Parking

Total Available Spaces = 1053

2nd December			
Start Time	Occupied	Vacant	% Occupied
10:00	603	450	57%
10:30	594	459	56%
11:00	636	417	60%
11:30	639	414	61%
12:00	Not Counted		
12:30	627	426	60%
13:00	627	426	60%
13:30	566	487	54%
14:00	562	491	53%
14:30	540	513	51%
15:00	536	517	51%
15:30	500	553	47%
Total	6430	5153	56%

6th January			
Start Time	Occupied	Vacant	% Occupied
10:00	640	413	61%
10:30	677	376	64%
11:00	706	347	67%
11:30	733	320	70%
12:00	736	317	70%
12:30	688	365	65%
13:00	660	393	63%
13:30	669	384	64%
14:00	688	365	65%
14:30	653	400	62%
15:00	615	438	58%
15:30	611	442	58%
Total	8076	4560	64%

Occupancy Difference December - January	
January +/-	% More in January
37	4%
83	8%
70	7%
94	9%
61	6%
33	3%
103	10%
126	12%
113	11%
79	8%
111	11%
910	8%