



Eurobodalla Heritage Strategy

2024 - 2028
Draft

Eurobodalla
Shire Council

Acknowledgment of Country

Eurobodalla Shire Council recognises Aboriginal people as the original inhabitants and custodians of all land and water in the Eurobodalla and respects their enduring cultural and spiritual connection to it. Eurobodalla Shire Council acknowledges the Traditional Owners of the land in which we live. Council pays respect to Elders past, present and future.

How to contact us

- In person** Customer Service Centre
Corner Vulcan and Campbell Streets, Moruya
Monday to Friday, 8.30am to 4.30pm
- Phone** 02 4474 1000
For after-hours emergencies call 1800 755 760
- Mail** PO Box 99, Moruya NSW 2537
- Email** council@esc.nsw.gov.au
- Web** www.esc.nsw.gov.au
- Councillors** See contact details on our website

Contents

.....	1
Introduction	2
Historical Context.....	3
Our Vision.....	4
Mission	4
What is Heritage?.....	4
Heritage management in the Eurobodalla	5
Our partners.....	6
1. Heritage Advisory Committee.....	7
2. Identification and listing of heritage items and places.....	8
3. Heritage Advisory Service	9
4. Managing local heritage.....	10
5. Local Heritage Grants Program	11
6. Tourism, educational and promotional programs.....	12
7. Manage Council owned heritage places	13
Definitions.....	14
References	14



York Engine

Introduction

The responsibility for managing and regulating cultural heritage in NSW is split between state and local governments. Local government has responsibility for local heritage through environmental planning instruments, regulatory services, and community engagement.

The Eurobodalla Heritage Strategy guides the Council's approach to the management of heritage items and places over the next four years. The Heritage Strategy must be consistent with Council's Community Strategic Plan (CSP), Local Environmental Plans (LEP), and other NSW Government heritage frameworks.

Through the CSP, the community has expressed its aspiration that local heritage will be valued, enhanced and celebrated. This Heritage Strategy articulates how to achieve this vision and meet Council's statutory responsibilities. One CSP Outcome is our community welcomes, celebrates and supports everyone; we respect our heritage and unique culture, acknowledging our beginnings and embrace our diversity.

Council can achieve the community's vision through implementing its four-year delivery program and one-year operational plan which identifies the management and promotion of the shire's heritage as an activity within the Delivery Programme.



Former Nelligen Court House entrance, Nelligen

Historical Context

First Nations people, The Yuin Nation have lived in this region for thousands of years. The landscape is part of their culture with Gulaga (formerly Mount Dromedary), Najanuka (formerly Little Dromedary) and Barunguba Montague Island Nature Reserve, (formerly Montague Island) having special significance. Many places have names derived from their Aboriginal names.

The significance and impact of that first contact on the First Australians cannot be overstated. The Eurobodalla was not spared from the lived experience of invasion and dispossession.

There is also rich shared history and heritage by Dhurga speaking people of the Yuin Nation, living and working alongside multicultural peoples.

Early European settlement relied heavily on river and sea transport because road transport was difficult with many rivers to cross. So, settlement developed where sea access was good. Eurobodalla Shire has a rich history in dairying, mining, maritime, timber, quarrying and defence of our coast in World War II. Ships were vital to transport produce to market in Sydney, especially timber, cheese and livestock, to bring supplies to the growing settlements, and to transport people. Ships were also vital to transport quarried granite from Moruya for Sydney Harbour Bridge and other buildings.

From the 1920s, tourism grew with increasing numbers of visitors from Canberra, Sydney and western NSW attracted by the region's remarkable beauty.



Najanuka (formerly Little Dromedary)

Our Vision

To champion and value our collective history for future generations.

Mission

That our Shire's cultural and environmental heritage is identified, recorded, promoted, valued and effectively managed and shared for current and future generations.

What is Heritage?

Heritage is evidence of both our Aboriginal and non-Aboriginal history. Conserving our cultural and environmental heritage helps us understand our past and contribute to the lives of future generations. It gives us a sense of continuity and belonging to the place where we live. Tangible heritage includes buildings, objects, monuments, Aboriginal places, gardens, bridges, natural landscapes, archaeological sites, shipwrecks, relics, streets, industrial structures and conservation precincts.¹ Intangible aspects of cultural heritage includes practices, stories, skills and cultural spaces.



Former Braemar Homestead, Moruya

Heritage management in the Eurobodalla

For over 20 years, Eurobodalla Shire Council has conducted a highly successful heritage management program that has been respected by Heritage NSW and many other shires across NSW. This success is largely due to the enthusiastic support of the community and community groups.

Council has listed many heritage items in its Local Environmental Plan 2012 with others occasionally added. Items are listed on the NSW Heritage Register. Of these, five are listed as being of State Heritage Significance, being:

Abernathy & Co Stonemason's Lathe, housed in Moruya
All Saints Church, Bodalla
Former Mechanics Institute Hall, Moruya
Lake View Homestead, Bergalia
Montague Island Light Station, Baranguba Montague Island Nature Reserve

Most items are listed as a result of one of the following community-based heritage studies:

- Tilba Conservation Area Heritage and Streetscape Study 1992
- Eurobodalla Shire-wide Heritage Study 1997
- Eurobodalla Aboriginal Heritage Study 2008
- Eurobodalla Community-Based Heritage Study 2011

All heritage studies are available under [Heritage studies and projects | Eurobodalla Council \(nsw.gov.au\)](#)



State Heritage listed - All Saints Church, Bodalla

Our partners

Our heritage advisory system supports community heritage projects through advice, expertise and funding.

Council works closely with our community, including our three historical societies (Clyde River & Batemans Bay, Moruya & Narooma) and Heritage NSW, to know, value and care for our heritage.

Together we:

- identify important places and objects
- manage Aboriginal cultural heritage
- provide guidance on how to look after heritage items.

Bring together a cross-section of community government and conservation knowledge.

The strategy has seven pillars with outcomes, objectives, and 32 actions. The seven pillars are:

1. Heritage advisory committee,
2. Identification and listing of heritage items and places,
3. Heritage advisory service,
4. Managing local heritage,
5. Local heritage place grants program,
6. Tourism, education and promotion programs,
7. Manage Council owned heritage places.

The strategy will assist in attaining funding and community input to achieve the actions below.



Last Ferry pre bridge opening, Batemans Bay 1956

1. Heritage Advisory Committee

Outcomes

- Regular meetings of the Heritage Advisory Committee provide a forum for dialogue related to conserving our Shire's heritage. The Council documents resolutions from these meetings.
- Professional advice and deliberation on heritage items, policies, interpretation, studies, issues and strategies, and other projects are available to the Council to manage our Shire's heritage.

Strategy

Continue to facilitate Council's [Heritage Advisory Committee](#).

Actions

1. The Heritage Advisory Service is to assist Council by acting as a conduit between the general community and the Council on heritage-related matters.
2. The Heritage Advisory Committee to advise Council on heritage-related matters that are of interest the community by providing expertise, local knowledge, and guidance. It will seek further expert advice where applicable.
3. The Heritage Advisory Committee to advise Council on strategies to ensure the conservation of items listed in Council's local environmental plans.
4. The Heritage Advisory Committee to advise Council staff and the Heritage Advisor on implementing Council's Heritage Strategy and assist Council with procuring and allocating funding.
5. Members of the Heritage Advisory Committee participate in meetings, field trips and site visits as required to extend their knowledge of heritage items within the Eurobodalla.
6. Members of the Heritage Advisory Committee to identify and list heritage items and places.

Note: Implementing the strategy is subject to funding by Council and Heritage NSW.



Plaque commemorating first stone shipped for Sydney Harbour Bridge

2. Identification and listing of heritage items and places

Outcomes

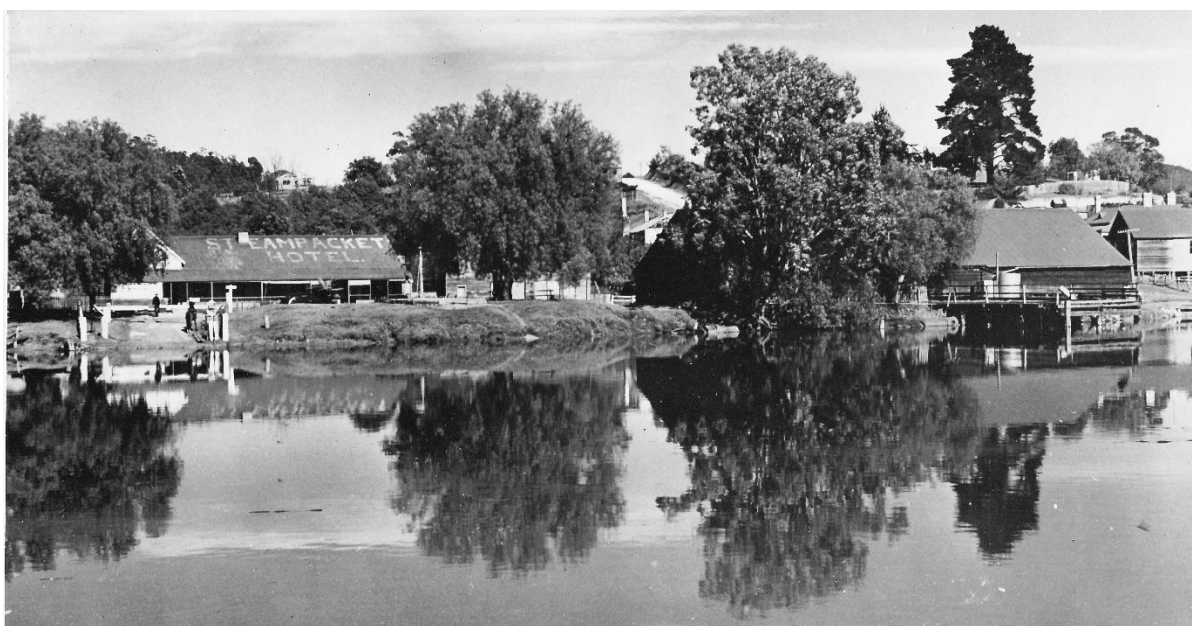
- Council's local environmental plans include up-to-date lists of environmental heritage items and places.
- The criteria and implications of the Council's Significant Tree Register are transparent and publicly available.

Strategy

Ensure the Council's local environmental plans include up-to-date lists of environmental heritage items and areas and that the Council's Significant Tree Register is current. Its contents are a consideration in assessing development applications and Council works.

Actions

7. Maintain a Potential Heritage Items List and investigate the heritage significance of nominated items as resources become available.
8. Prioritise at-risk items within the potential heritage item list.
9. Update the Council's *[Eurobodalla Local Environmental Plan 2012](#)* with new or amended heritage items and keep property descriptions up-to-date.
10. Maintain Council's Significant Tree Register on Council's website, develop guidelines and ensure all stakeholders are aware of the procedures and benefits of registration.



Old Steampacket Hotel, Nelligen circa 1925

3. Heritage Advisory Service

Outcomes

- Professional advice is provided by the Heritage Advisor to inform decision-making by staff and owners of heritage items in order to best manage, conserve and protect shared cultural heritage in Eurobodalla.
- Sustainable development is employed as a tool for the preservation and conservation of heritage items
- Sympathetic sustainable development contributes to the viability of heritage items.

Strategy

Continue to support and fund a Heritage Advisor to assist Council, the community and owners of heritage-listed items.

Encourage the sustainable development of heritage items through the development assessment process.

Continue to support and fund a Museum advisory service across the Shire.

Actions

11. The primary task of the Heritage Advisor is to provide professional heritage advice that assists Council to work with the community to encourage good management and presentation of heritage conservation and urban design in the Eurobodalla.
12. Provide a Heritage Advisory Service to the owners of listed heritage items at no cost to them. Development assessment staff to consider the following when assessing development applications:
 - a. Encouraging and supporting compatible adaptive reuse /infill/ sympathetic additions to heritage items; and
 - b. sensitive application of the Building Code of Australia (BCA) and [Disability Discrimination Act 1992](#) requirements for new development in a heritage building; and
 - c. Encourage incorporating energy-efficient design solutions into heritage items for water, energy and waste.
13. Encourage owners of heritage items to consider sustainable development options when preparing conservation/development applications for approval on heritage items.
14. Partner with Create NSW and Museums & Galleries NSW to deliver the Museums Advisors Program.

Heritage Advisory Service fund is \$20,000 per annum - ESC \$14,000 + \$6,000 Heritage NSW
Museum Advisory Service fund is \$14,000 per annum – ESC \$7,000 + \$7,000 Museum & Galleries NSW



Plaque commemorating last stone placed in Sydney Harbour Bridge

4. Managing local heritage

Outcomes

- We will increase community awareness and engagement in the importance and relevance of our Shire's environmental heritage.
- Proactive heritage management.
- Investigate options to include the Cultural Landscape Study of Bodalla as a Conservation Area.
- Local history, as recorded in the contemporary print media, is a widely available resource.

Strategy

To research, interpret and conserve the essential heritage items that have shaped the shared history and development of Eurobodalla. Council recognises the inherent risk of natural disasters such as storms, inundation and fire on collections, the built environment, and places of interest.

Actions

15. Support our local historical societies with funding for specific approved projects and the continuation of information sharing.
16. Create a Plan of Management for historical and isolated cemeteries based on the Historic Cemeteries Conservation Management Study 2020.
17. Work with community groups to undertake architectural, photographic and mapping of heritage sites and preservation of collections at risk in Eurobodalla as they become apparent.
18. Promote Council's flexible and sympathetic approach to conservation works or proposals.
19. Work with landowners to adopt the directions of the Bodalla Cultural Landscape Study to guide any future development of the rural area to the north and west of Bodalla. Encourage and support the archiving of local newspapers on the Trove website.

General Heritage Management \$8,000 per annum – includes Historical Society Support payments



Central Tilba General Store , Central Tilba

5. Local Heritage Grants Program

Outcomes

- Maximum funds are employed to assist with the conservation and maintenance of heritage items.
- The appreciation and heritage value of our Shire's shared heritage is enhanced.
- Recognise community members who do excellent work to preserve our Shire's heritage.

Strategy

Investigate funding opportunities for small grants to support owners of heritage items.

Actions

20. Support the conservation and maintenance of heritage items through Council's Local Heritage Grants.
21. Promote the availability of grant funding for heritage items to encourage and enable preserve the conservation of our heritage and review the funding priorities each year.
22. Assist owners of heritage items in procuring grant funding.
23. Promote good conservation work from the program to encourage appreciation of our heritage buildings and streetscapes.
24. Conduct the Fergus Thomson OAM Heritage Award program for community members engaged in promoting and conserving the shared heritage of the Eurobodalla Shire.

Local Heritage Grants fund is \$25,500 per annum - ESC \$19,000 + Heritage NSW \$6,500



Local Heritage Grant Recipient - Post and Telegraph Building, Moruya

6. Tourism, educational and promotional programs

Outcomes

- Councillors and Council staff actively include heritage as a critical consideration in performing their duties. Council officers are well-equipped to make informed decisions on heritage management.
- The community will be better informed about best practice procedures, initiatives and techniques on heritage and heritage management in the Eurobodalla Shire.
- Enhance local tourism by offering heritage products through maps of heritage walks and drives.
- Heritage tourism showcases this community's vibrant heritage. It continues to develop a sense of identity for the Eurobodalla beyond forests and beaches.

Strategy

Continue to fund and present educational and promotional programs.

Actions

25. Provide training in heritage conservation values and processes for staff assessing development applications and participate in the Heritage NSW training and education programs.
26. Provide information on heritage resources, management, and heritage tourism, links to relevant websites accessible from Council's website, and provide input into the tourism wayfinding and signage strategy implementation.
27. Support exhibitions and information sessions on heritage issues and topics.
28. Continue the development of digital and printed local heritage tourism maps hand in hand with the establishment of heritage trails.
29. Provide material for tourism signage implementation, such as mining, timber, maritime and food.



Muladha Gamara dancers

7. Manage Council owned heritage places

Outcomes

- Council's heritage assets are well-maintained and accessible to the community.

Strategy

Properly manage Council owned or operated heritage assets such that they are well maintained and used by the community.

Actions

30. Cooperatively manage Council's heritage assets in consultation with the community.
31. Install interpretive signage for Council's heritage assets.
32. Ensure Council-owned and managed heritage items or areas addressed explicitly in Council's Asset Management Plans with actions for interpreting heritage significance.



Moruya showground Grandstand, Moruya

Definitions

Heritage item has the same meaning as in the [Eurobodalla Local Environmental Plan 2012](#): a building, work, place, relic, tree, object or archaeological site, the location and nature described in Schedule 5.

The heritage conservation area has the same meaning as in the [Eurobodalla Local Environmental Plan 2012](#), being an area of land of heritage significance:

- (a) shown on the Heritage Map as a heritage conservation area, and
- (b) the location and nature of which are described in Schedule 5,

and includes any heritage items situated on or within that area.

References

Front cover photo – Baranguba Montague Island Reserve – courtesy NPWS

Burra Charter

[Burra Charter & Practice Notes | Australia ICOMOS](#)

Heritage NSW Division of the NSW Department of Planning and Environment
[Heritage | NSW Environment and Heritage](#)

NSW Heritage Council

[Heritage Council of NSW | NSW Environment and Heritage](#)

NSW State Heritage Inventory (a database containing all heritage items and areas listed in the Eurobodalla)

[State Heritage Inventory | NSW Environment and Heritage](#)

Heritage Studies referred to in this strategy

[Heritage studies and projects | Eurobodalla Council \(nsw.gov.au\)](#)



Narooma 1904

Eurobodalla Shire Council

Corner Vulcan and Campbell Streets, Moruya

PO Box 99

Moruya NSW 2537

02 4474 1000

council@esc.nsw.gov.au

www.esc.nsw.gov.au

Follow us on Facebook or Instagram

 www.facebook.com/EurobodallaCouncil

 [@eurobodallacouncil](https://www.instagram.com/eurobodallacouncil)