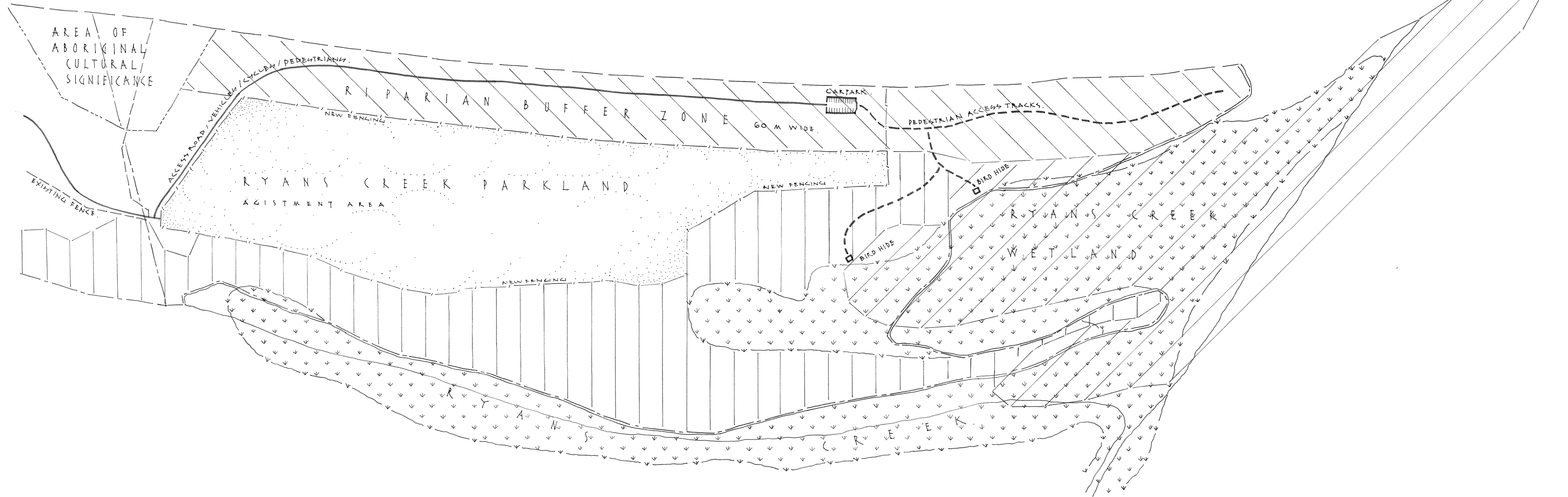



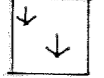
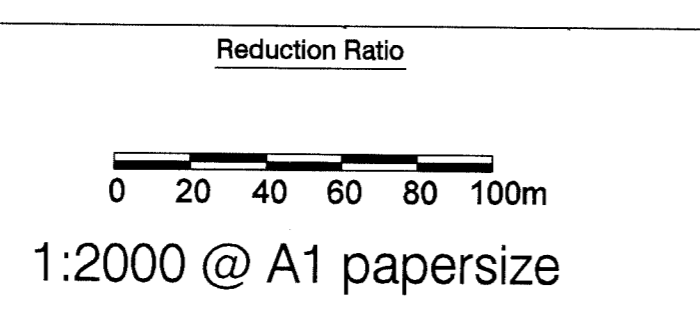


M O R U Y A R I V E R



-  SWAMP OAK FLOODPLAIN FOREST
-  RIPARIAN BUFFER ZONE 60 M WIDE
-  MANGROVE AND COASTAL SALT MARSH
-  RYAN'S CREEK WETLAND

File Number	01.5728	Datum		Designed For	
Cad Reference	Q1TechDraw40004376B - Plan of Management	Drawn	WR & DP	Design Speed	
Job Number	RC084	Designed	WR & DP	Lane Width	
		Checked		Pavement Depth	

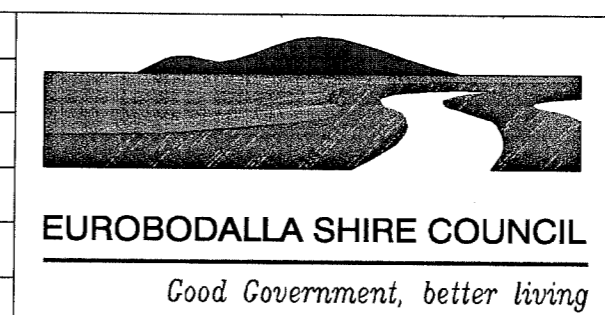


Approved On Behalf Of
EUROBODALLA SHIRE COUNCIL

Technical Services Manager
Date

No.	Amendment Details	A	B	C	D	By	Appd	Date

Development Approval NOT Required



EUROBODALLA SHIRE COUNCIL
Ryan's Creek Parkland, Ryan's Creek Wetland & Ryan's Creek
 Ford & Shore Streets, Moruya
Plan of Management - Landscape Masterplan

Project No.	4376		
Sheet of	3	Set	B
Archived			