



Note 1: Landward movement of the shoreline could be limited by the presence of bedrock.

Note 2: The shoreline could potentially move landward of the hazard lines in the watercourse entrance instability region due to lowering of the beach profile from entrance scouring.

Guerilla Bay (south)

Deterministic erosion/recession hazard lines




 Watercourse instability region

Figure I.17



Note 1: Landward movement of the shoreline could be limited by the presence of bedrock.

Note 2: The shoreline could potentially move landward of the hazard lines in the watercourse entrance instability region due to lowering of the beach profile from entrance scouring.

Note 3: Hazard lines do not extend to the western end of the beach as this is the limit of available photogrammetry.

Barlings Beach

Deterministic erosion/recession hazard lines

- 2017
- 2050
- 2065
- 2100

Watercourse instability region

Figure I.18



Note 1: Landward movement of the shoreline could be limited by the presence of bedrock.
 Note 2: The watercourse entrance instability region is potentially subject to breakthrough from the Tomaga River and modified sand transport processes.
 Note 3: Potential for salient loss cannot be fully quantified with contemporary desktop engineering techniques. The shoreline could potentially move landward of the hazard lines in this region due to sea level rise or other coastal processes.

Tomakin Cove
 5% encounter probability
 Probabilistic erosion/recession hazard lines

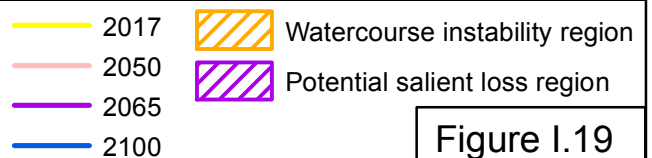
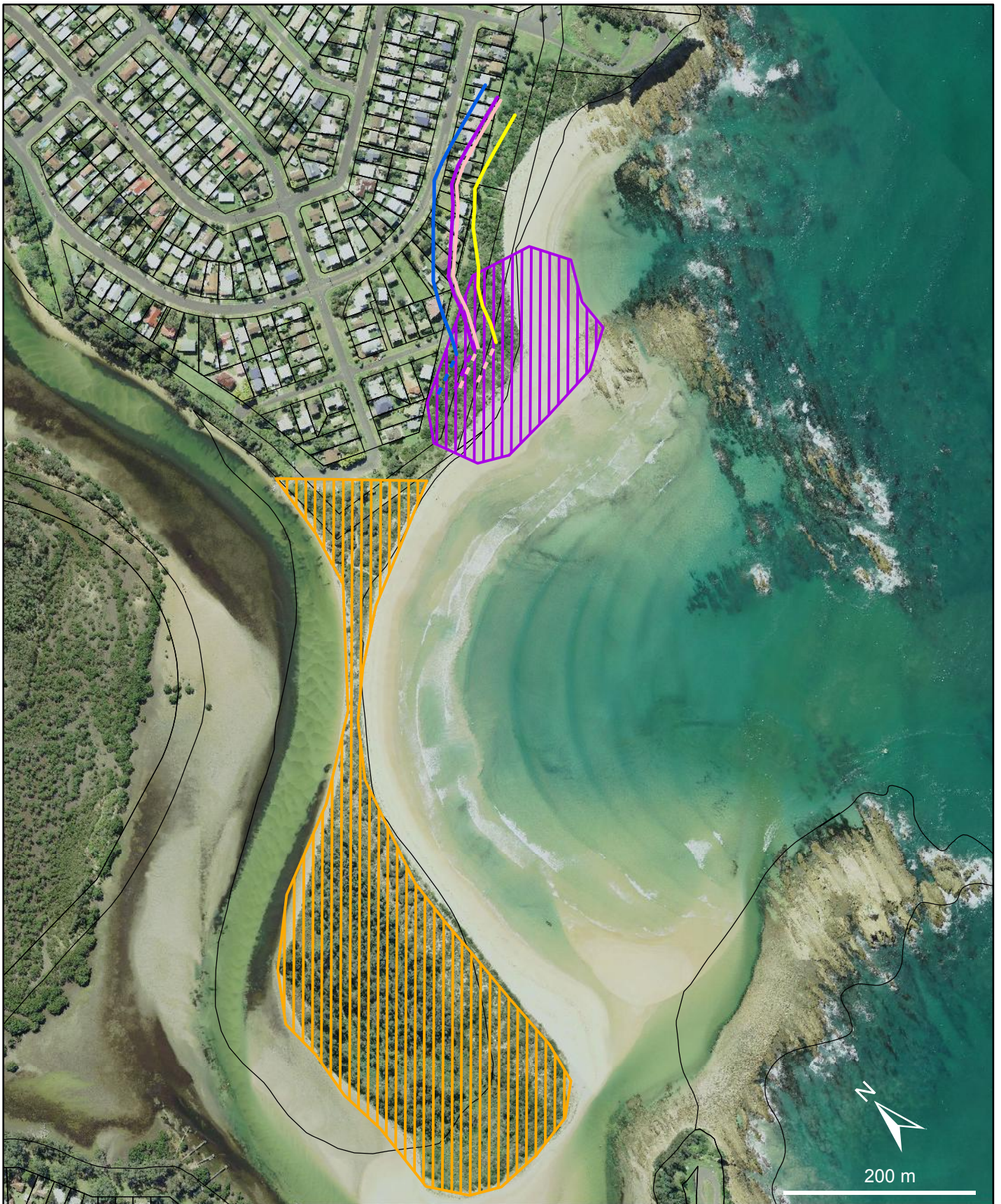


Figure I.19



Note 1: Landward movement of the shoreline could be limited by the presence of bedrock.

Note 2: The watercourse entrance instability region is potentially subject to breakthrough from the Tomaga River and modified sand transport processes.

Note 3: Potential for salient loss cannot be fully quantified with contemporary desktop engineering techniques. The shoreline could potentially move landward of the hazard lines in this region due to sea level rise or other coastal processes.

Tomakin Cove

1% encounter probability

Probabilistic erosion/recession hazard lines

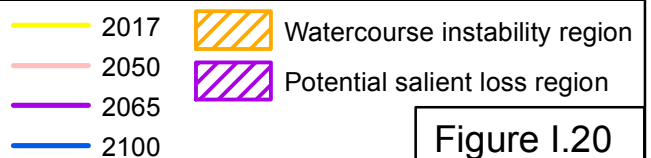


Figure I.20