






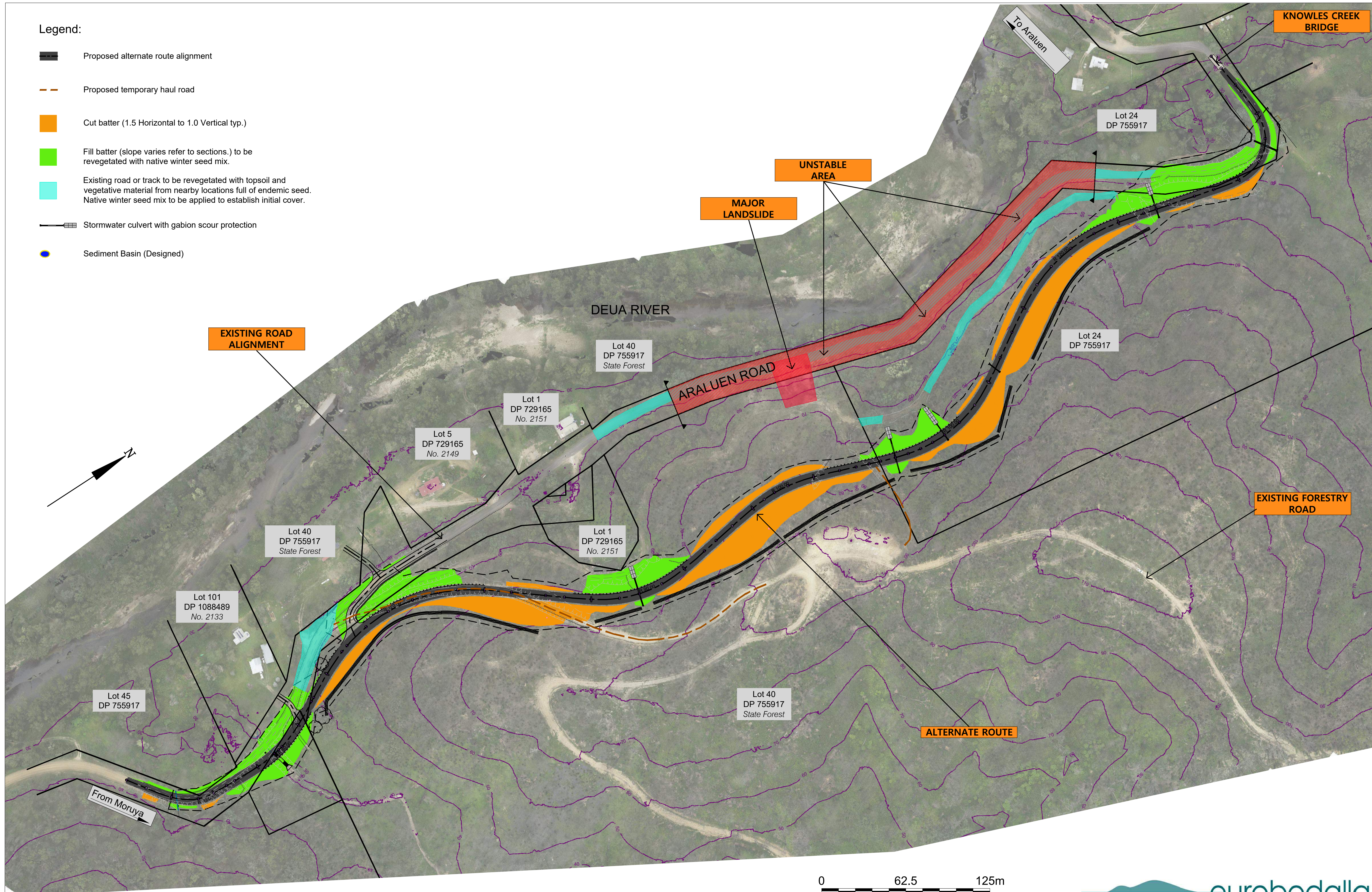


Legend:

-  Proposed alternate route alignment
-  Proposed temporary haul road
-  Cut batter (1.5 Horizontal to 1.0 Vertical typ.)
-  Fill batter (slope varies refer to sections.) to be revegetated with native winter seed mix.
-  Existing road or track to be revegetated with topsoil and vegetative material from nearby locations full of endemic seed. Native winter seed mix to be applied to establish initial cover.
-  Stormwater culvert with gabion scour protection
-  Sediment Basin (Designed)



## Araluen Road (East of Knowles Road), Deua River Valley - Site Plan

0 62.5 125m  
July 2021 scale 1:1250 @ A1



For more information go to Council - Major Projects and Works on Council's web page: [www.esc.nsw.gov.au](http://www.esc.nsw.gov.au)