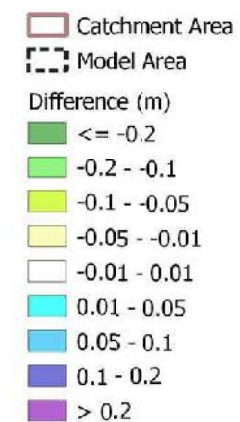


G708 Surfside Sensitivity Culvert Blockage



Scale : 1:3,000 @A3
Date : 12 July 2021
Revision : A
Created by : LRE
Coordinate System : MGA94 Zone 56



G801-c-1 Surfside PMF Depth

Legend

Study Area

Depth (m)

- 0.15 - 0.3
- 0.3 - 0.5
- 0.5 - 1
- 1 - 2
- 2 - 3
- 3 - 4
- >4



0 130 260 390 m

1:8,000

Size : A3
Date : 15 June 2020
Revision : A
Created by : LRE
Coordinate System : MGA 56

R h e l m





G801-c-2
Surfside
1% AEP Depth

Legend

Study Areas

Depth (m)

- 0.15 - 0.3
- 0.3 - 0.5
- 0.5 - 1
- 1 - 2
- 2 - 3
- 3 - 4
- >4



0 130 260 390 m

1:8000

Size : A3
Date : 15 June 2020
Revision : A
Created by : LRE
Coordinate System : MGA 56

R h e l m



**G801-c-3
Surfside
10% AEP Depth**

Legend

Study Areas

Depth (m)

0.15 - 0.3

0.3 - 0.5

0.5 - 1

1 - 2

2 - 3

3 - 4

>4



0 130 260 390 m

1:8000

Size : A3

Date : 15 June 2020

Revision : A

Created by : LRE

Coordinate System : MGA 56

R h e l m



G802-c-1 Surfside PMF Velocity

Legend

Study Areas

Velocity (m/s)

0 - 0.5

0.5 - 1

1 - 2

2 - 3

3 - 4

> 4



0 130 260 390 m

1:8000

Size : A3
Date : 15 June 2020
Revision : A
Created by : LRE
Coordinate System : MGA 56

R h e l m



**G802-c-2
Surfside
1% AEP Velocity**

Legend

Study Areas

Velocity (m/s)

0 - 0.5

0.5 - 1

1 - 2

2 - 3

3 - 4

> 4



0 130 260 390 m

1:8000

Size : A3
Date : 15 June 2020
Revision : A
Created by : LRE
Coordinate System : MGA 56

R h e l m



**G802-c-3
Surfside
10% AEP Velocity**

Legend

Study Areas

Velocity (m/s)

0 - 0.5

0.5 - 1

1 - 2

2 - 3

3 - 4

> 4



0 130 260 390 m

1:8000

Size : A3
Date : 15 June 2020
Revision : A
Created by : LRE
Coordinate System : MGA 56

R h e l m



G803-c-1 Surfside PMF Hazard



0 130 260 390 m

1:8000

Size : A3
Date : 15 June 2020
Revision : A
Created by : LRE
Coordinate System : MGA 56

R h e l m

Legend

Study Areas

Hazard

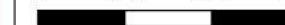
- H1 - Generally safe for vehicles, people & buildings
- H2 - Unsafe for small vehicles
- H3 - Unsafe for vehicles, children and the elderly
- H4 - Unsafe for vehicles and people
- H5 - Unsafe for vehicles and people. All buildings vulnerable to structural damage. Some less robust building types vulnerable to failure
- H6 - Unsafe for vehicles and people. All building types considered vulnerable to failure



G803-c-1 Surfside PMF Hazard



0 130 260 390 m



1:8000

Size : A3
Date : 15 June 2020
Revision : A
Created by : LRE
Coordinate System : MGA 56



Legend

Study Areas

Hazard

- H1 - Generally safe for vehicles, people & buildings
- H2 - Unsafe for small vehicles
- H3 - Unsafe for vehicles, children and the elderly
- H4 - Unsafe for vehicles and people
- H5 - Unsafe for vehicles and people. All buildings vulnerable to structural damage. Some less robust building types vulnerable to failure
- H6 - Unsafe for vehicles and people. All building types considered vulnerable to failure





**G803-c-2
Surfside
1% AEP Hazard**



0 130 260 390 m

1:8000

Size : A3
Date : 15 June 2020
Revision : A
Created by : LRE
Coordinate System : MGA 56

R h e l m

Legend

Study Areas

Hazard

- H1 - Generally safe for vehicles, people & buildings
- H2 - Unsafe for small vehicles
- H3 - Unsafe for vehicles, children and the elderly
- H4 - Unsafe for vehicles and people
- H5 - Unsafe for vehicles and people. All buildings vulnerable to structural damage. Some less robust building types vulnerable to failure
- H6 - Unsafe for vehicles and people. All building types considered vulnerable to failure



G803-c-3
Surfside
10% AEP Hazard



0 130 260 390 m

1:8000

Size : A3
Date : 15 June 2020
Revision : A
Created by : LRE
Coordinate System : MGA 56

R h e l m

Legend

Study Areas

Hazard

- H1 - Generally safe for vehicles, people & buildings
- H2 - Unsafe for small vehicles
- H3 - Unsafe for vehicles, children and the elderly
- H4 - Unsafe for vehicles and people
- H5 - Unsafe for vehicles and people. All buildings vulnerable to structural damage. Some less robust building types vulnerable to failure
- H6 - Unsafe for vehicles and people. All building types considered vulnerable to failure



G804-c-1 Surfside PMF Flood Function

Legend

- Study Areas
- Flood Function
 - Floodway
 - Storage
 - Fringe



0 130 260 390 m

1:8000

Size : A3
Date : 15 June 2020
Revision : A
Created by : LRE
Coordinate System : MGA 56

R h e l m



**G804-c-2
Surfside
1% AEP Flood
Function**

Legend

-  Study Areas
- Flood Function**
-  Floodway
-  Storage
-  Fringe



0 130 260 390 m

1:8000

Size : A3
Date : 15 June 2020
Revision : A
Created by : LRE
Coordinate System : MGA 56

R h e l m





**G805-c-1
Surfside
1% AEP 0.35m SLR
Impacts
(2050 Scenario)**

Legend

Study Area

Water Level Difference (m)

Was dry, now wet

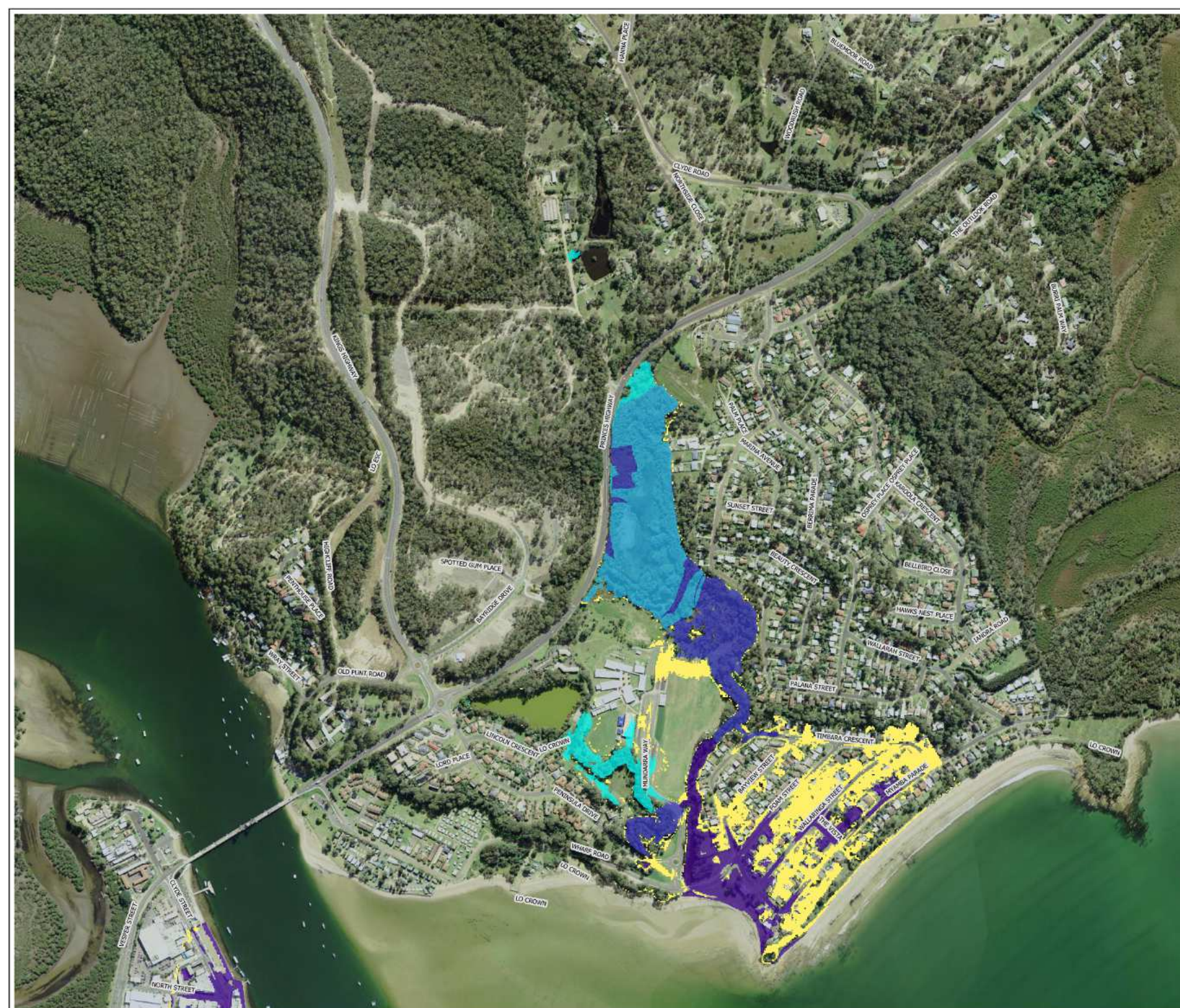


0 130 260 390 m

1:8000

Size : A3
Date : 15 June 2020
Revision : A
Created by : LRE
Coordinate System : MGA 56

R h e l m





**G805-c-2
Surfside
5% AEP 0.35m SLR
Impacts
(2050 Scenario)**

Legend

Study Areas

Water Level Difference (m)

<= 0.01

0.01 - 0.05

0.05 - 0.1

0.1 - 0.2

0.2 - 0.4

0.4 - 0.6

> 0.6

Was dry, now wet

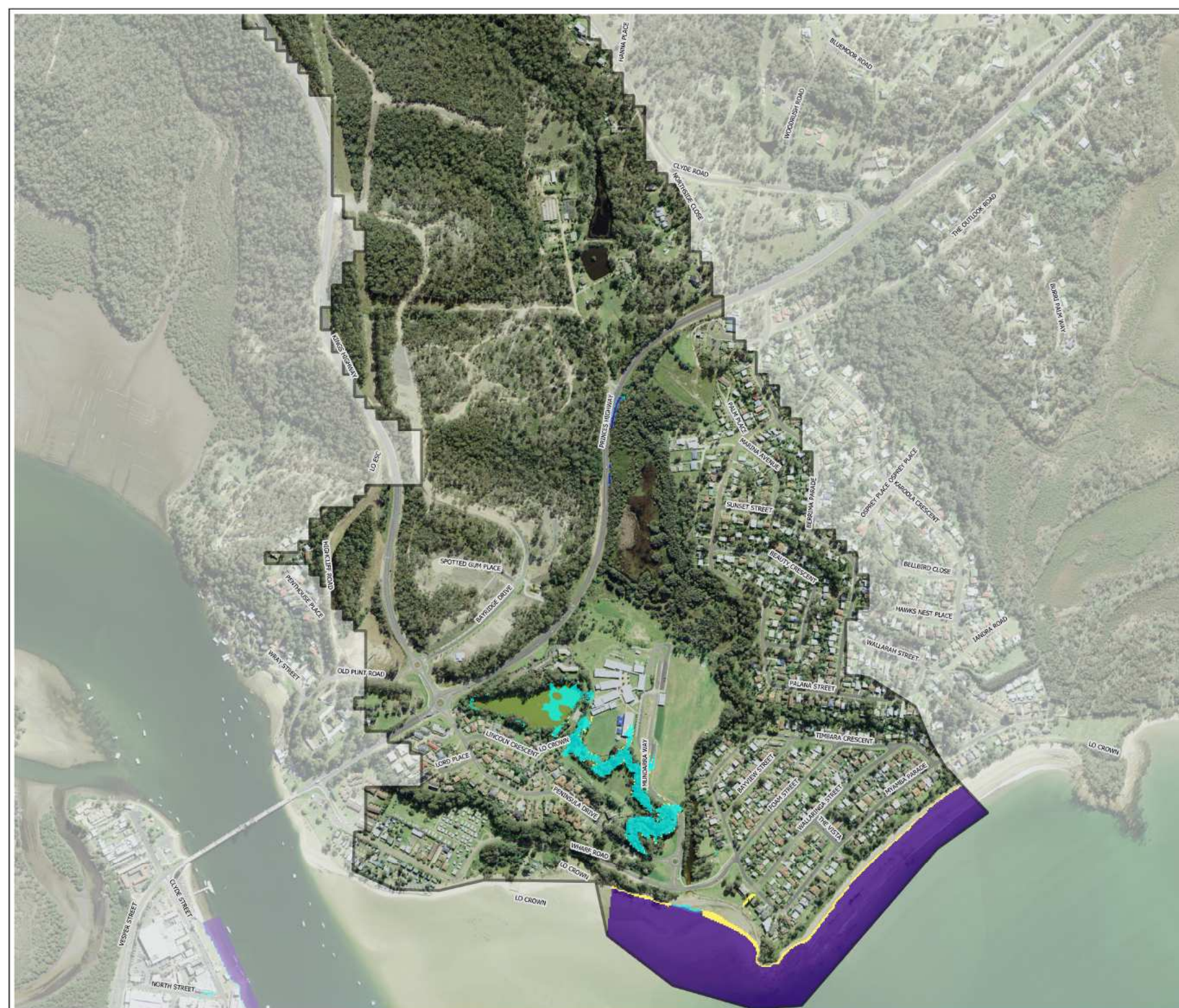


0 130 260 390 m

1:8000

Size : A3
Date : 15 June 2020
Revision : A
Created by : LRE
Coordinate System : MGA 56

R h e l m





G806-c Surfside 0.72m SLR Impacts (2100 Scenario)

Legend

Study Area

Water Level Difference (m)

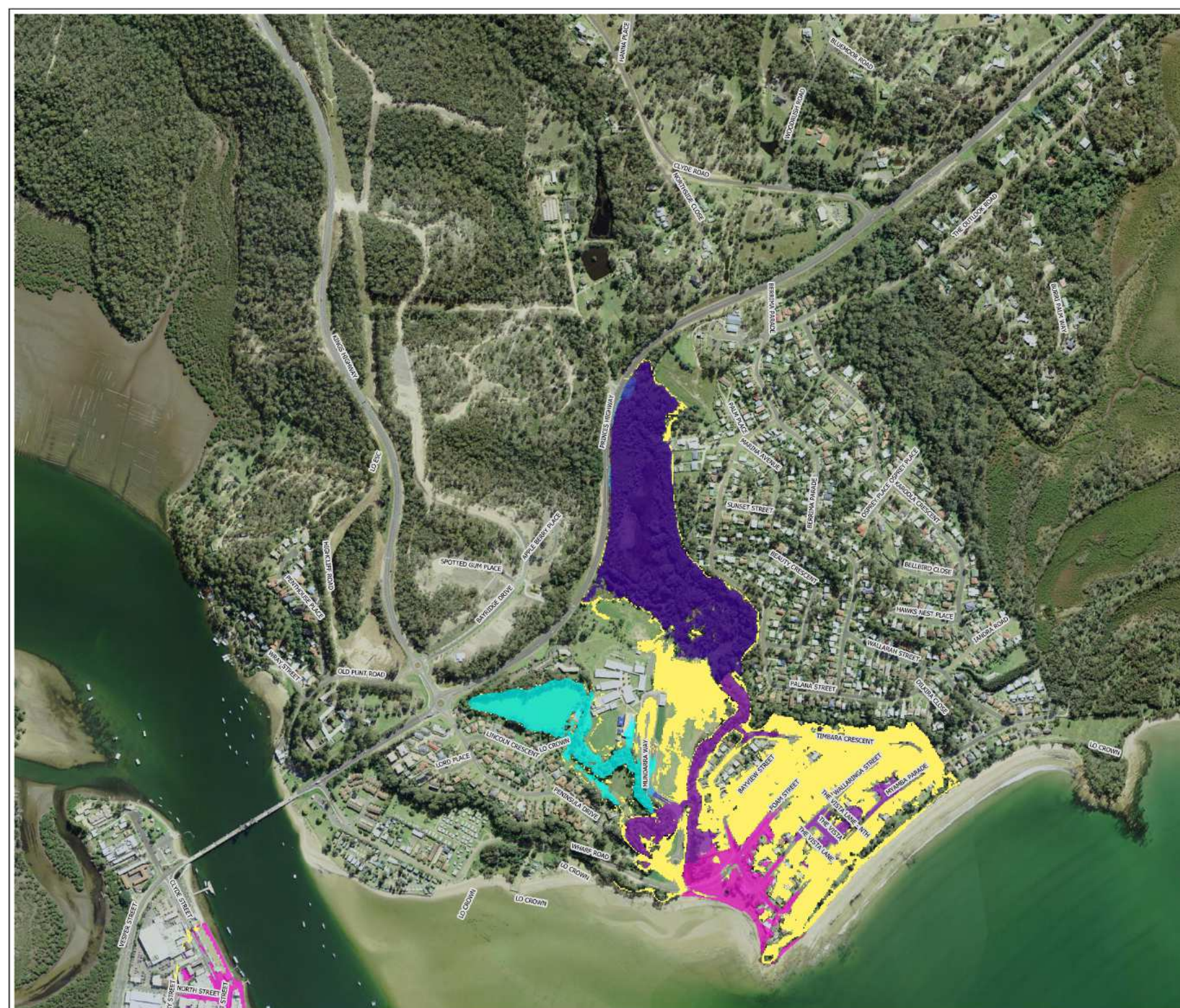
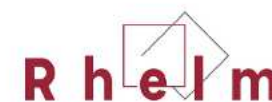
- ≤ 0.01
- 0.01 - 0.05
- 0.05 - 0.1
- 0.1 - 0.2
- 0.2 - 0.4
- 0.4 - 0.6
- > 0.6
- Was dry, now wet



0 130 260 390 m

1:8000

Size : A3
Date : 15 June 2020
Revision : A
Created by : LRE
Coordinate System : MGA 56







**G807-c-2
Surfside
PMF Critical Duration**


Legend


 Study Areas

Critical Duration

 60 minute

 90 minute

 120 minute

 180 minute



0 130 260 390 m



1:8000

Size : A3
Date : 15 June 2020
Revision : A
Created by : LRE
Coordinate System : MGA 56

R h e l m





**G807-c-2
Surfside
1% AEP Critical
Duration**


Legend


 Study Areas

Critical Duration

 30 minute

 60 minute

 120 minute

 180 minute



0 130 260 390 m



1:8000

Size : A3
Date : 15 June 2020
Revision : A
Created by : LRE
Coordinate System : MGA 56

R h e l m



**G807-c-2
Surfside
10% AEP Critical
Duration**

Legend

Study Areas

Critical Duration

30 minute

90 minute

120 minute

270 minute



0 130 260 390 m

1:8000





Size : A3
Date : 15 June 2020
Revision : A
Created by : LRE
Coordinate System : MGA 56

R h e l m



G807-c Surfside Tidal Inundation

Legend

-  Study Areas
-  Existing Tidal Extent
-  0.35m SLR Tidal Extent
-  0.72m SLR Tidal Extent

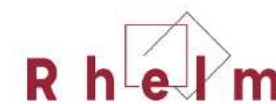


0 130 260 390 m



1:8000

Size : A3
Date : 15 June 2020
Revision : A
Created by : LRE
Coordinate System : MGA 56





G901-c Surfside Flood Planning Area

Legend

-  Study Areas
-  Existing 1% AEP +0.5m
-  0.35m SLR 1% AEP +0.5m
-  0.72m SLR 1% AEP +0.5m
-  PMF Extent

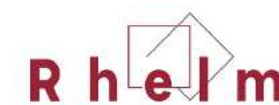


0 130 260 390 m



1:8000

Size : A3
Date : 15 June 2020
Revision : A
Created by : LRE
Coordinate System : MGA 56





G902-c-1 Surfside PMF Flood Emergency Response Classifications

Legend

Study Areas

Classifications

Flooded Rising Road

Flooded Overland Escape

Isolated, Elevated

Isolated, Submerged

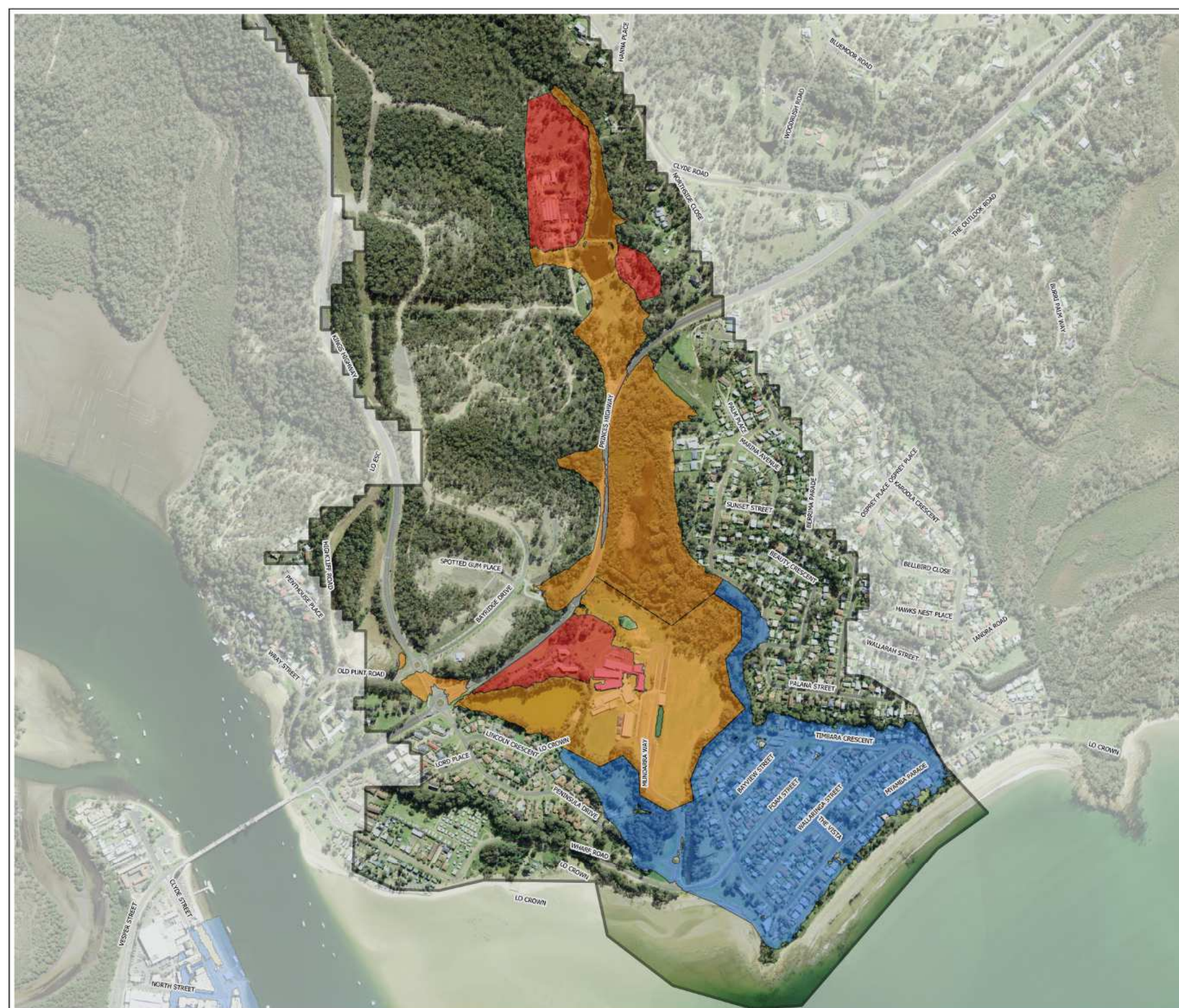


0 130 260 390 m

1:8000

Size : A3
Date : 15 June 2020
Revision : A
Created by : LRE
Coordinate System : MGA 56

R h e l m





**G902-c-2
Surfside
1% AEP Flood
Emergency Response
Classifications**

Legend

Study Areas

Classifications

Flooded Rising Road

Flooded Overland Escape

Isolated, Elevated

Isolated, Submerged

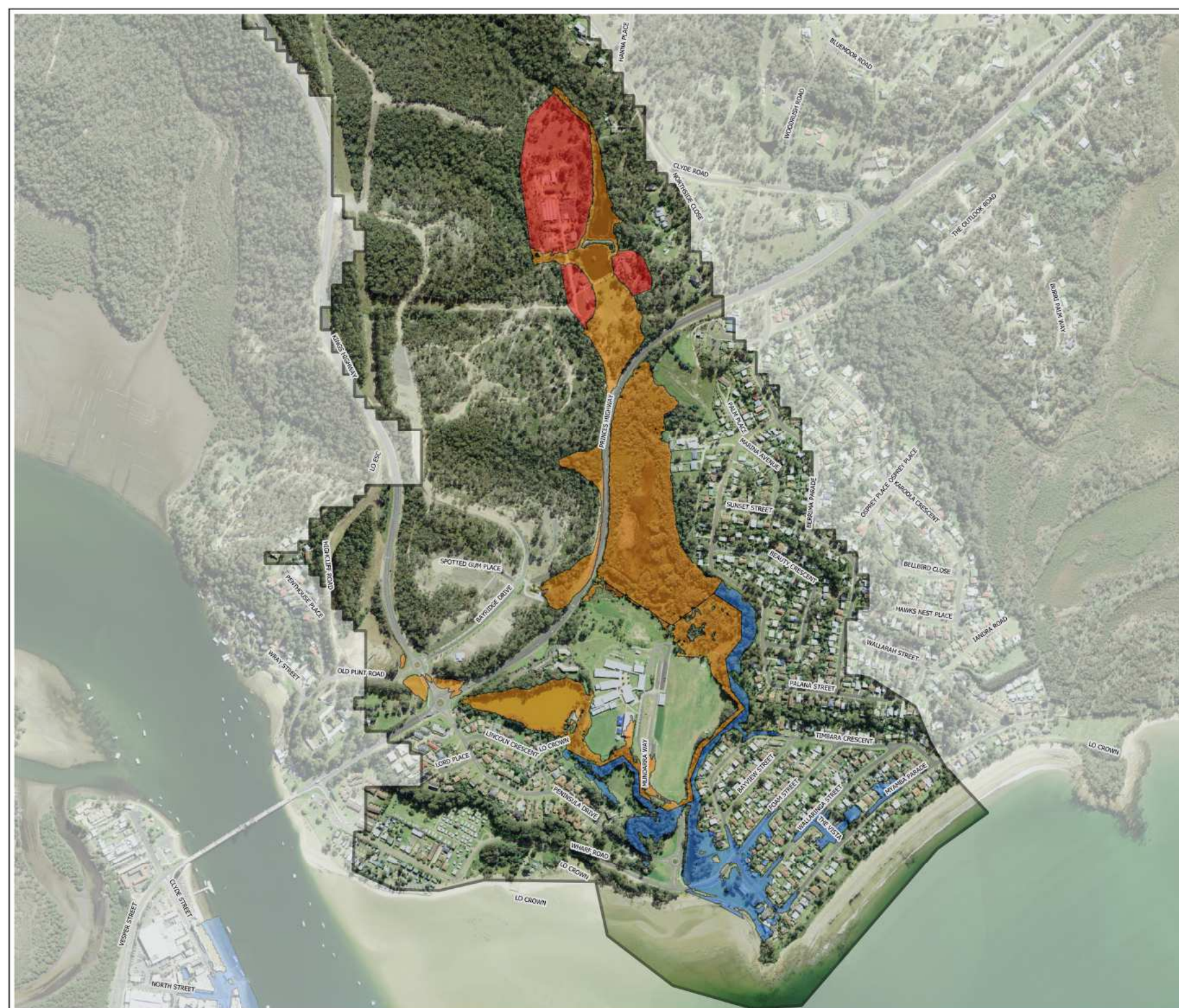


0 130 260 390 m

1:8000

Size : A3
Date : 15 June 2020
Revision : A
Created by : LRE
Coordinate System : MGA 56

R h e l m



ID	Location	20% AEP	10% AEP	1% AEP	PMF
S-1	Wharf Road	0	0	0.56	1.29
S-2	Timbara Crescent	0	0	0.34	1.16
S-3	Mundarra Way	0	0	0.36	1.47
S-4	Palama Street	0	0	0	0.83
S-5	Princes Highway	0	0	0.17	0.41
S-6	Princes Highway	0.55	0.62	0.68	0.97
S-7	Princes Highway	0	0	0.23	0.78
S-8	Access Road	0.23	0.26	0.39	1.52



G903-c Surfside Road Overtopping

Legend

- Study Areas
- Overtopping Locations
- 1% AEP Depth (m)
 - 0.15 - 0.3
 - 0.3 - 0.5
 - 0.5 - 1
 - 1 - 2
 - 2 - 3
 - 3 - 4
 - >4



0 130 260 390 m



1:8000

Size : A3
Date : 15 June 2020
Revision : A
Created by : LRE
Coordinate System : MGA 56

R h e l m





T002-c Surfside Pump Station Affection

Legend

- Study Areas
- 10% AEP Extent
- 1% AEP Extent
- PMF Extent

Pump Station Affection

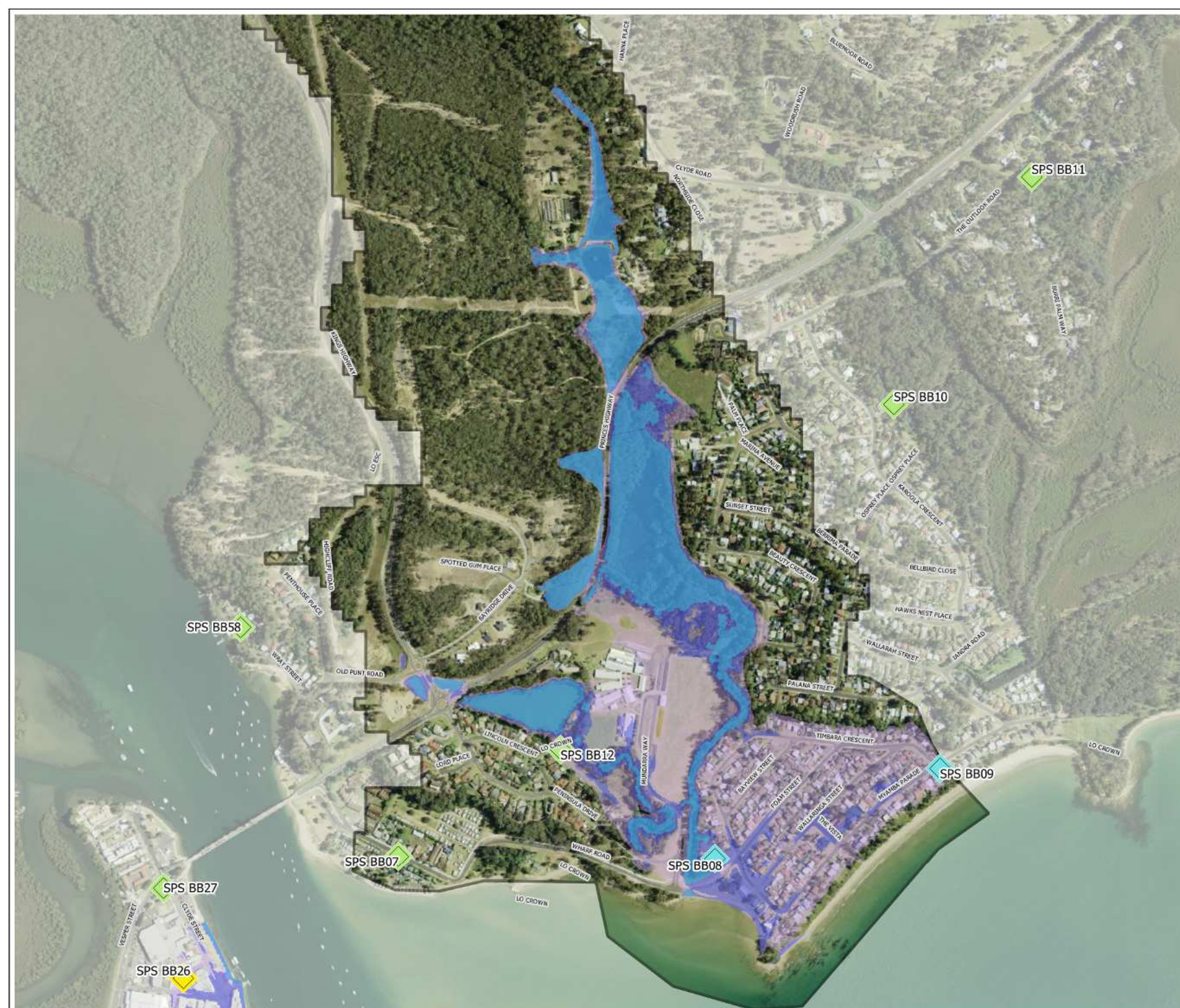
- Flooded in 10% AEP
- Flooded in 1% AEP
- Flooded in PMF
- Flood Free



0 130 260 390 m

1:8,000

Size : A3
Date : 15 June 2020
Revision : A
Created by : LRE
Coordinate System : MGA 56





G905-c Surfside Draft Flood Prone Land Control Areas

Legend

- Study Areas
- FPA - Flood Planning Area
- SFC - Special Flood Considerations

Land Use Zones

- | | | | |
|----|-----|-----|-----|
| B1 | E2 | RE1 | SP1 |
| B2 | E4 | RE2 | SP2 |
| B4 | IN1 | RU1 | SP3 |
| B5 | R2 | RU3 | W1 |
| DM | R3 | RU4 | W2 |
| E1 | R5 | RU5 | |



0 130 260 390 m

1:8000

Size : A3
Date : 22 June 2020
Revision : A
Created by : LRE
Coordinate System : MGA 56

