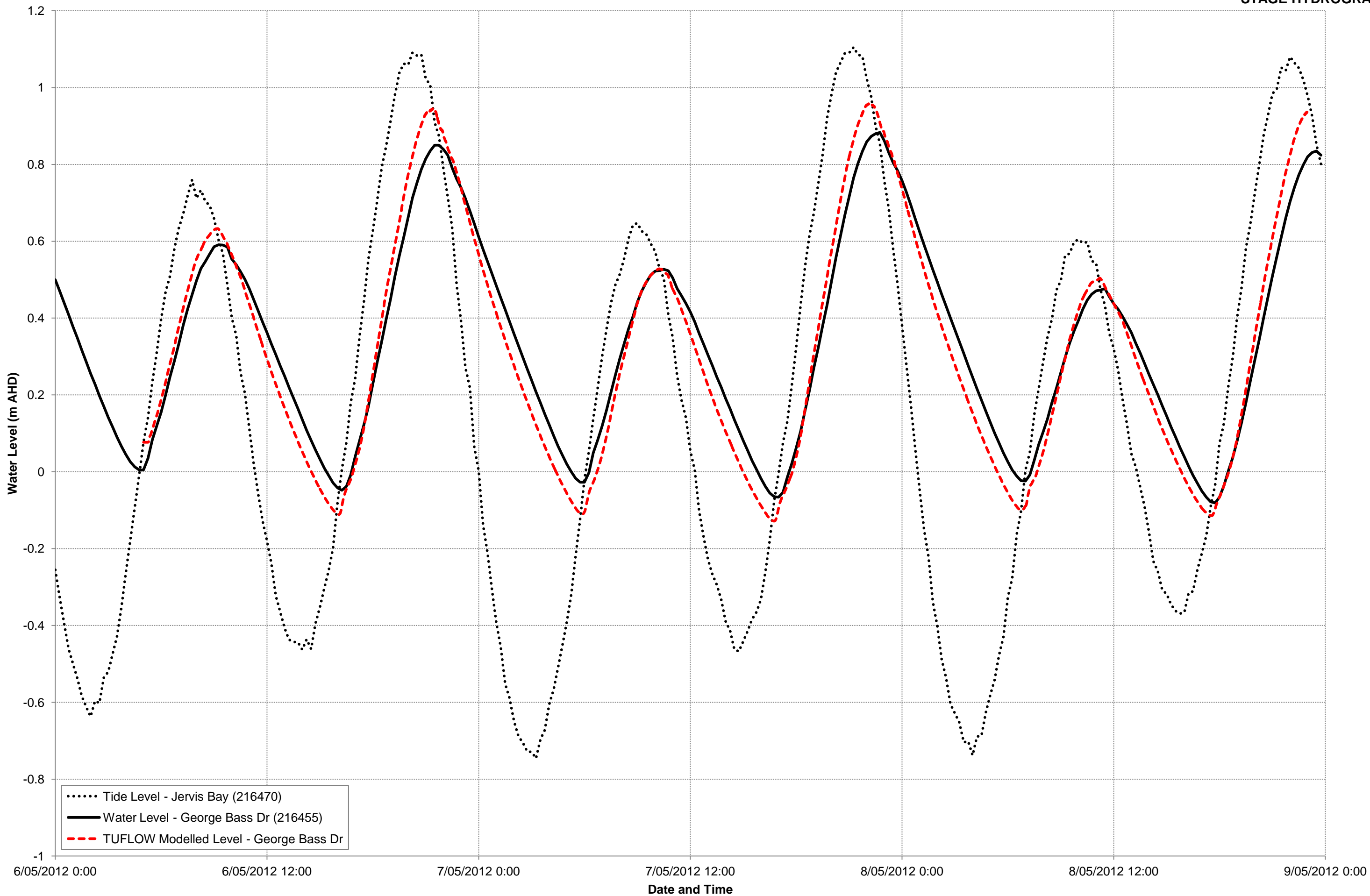
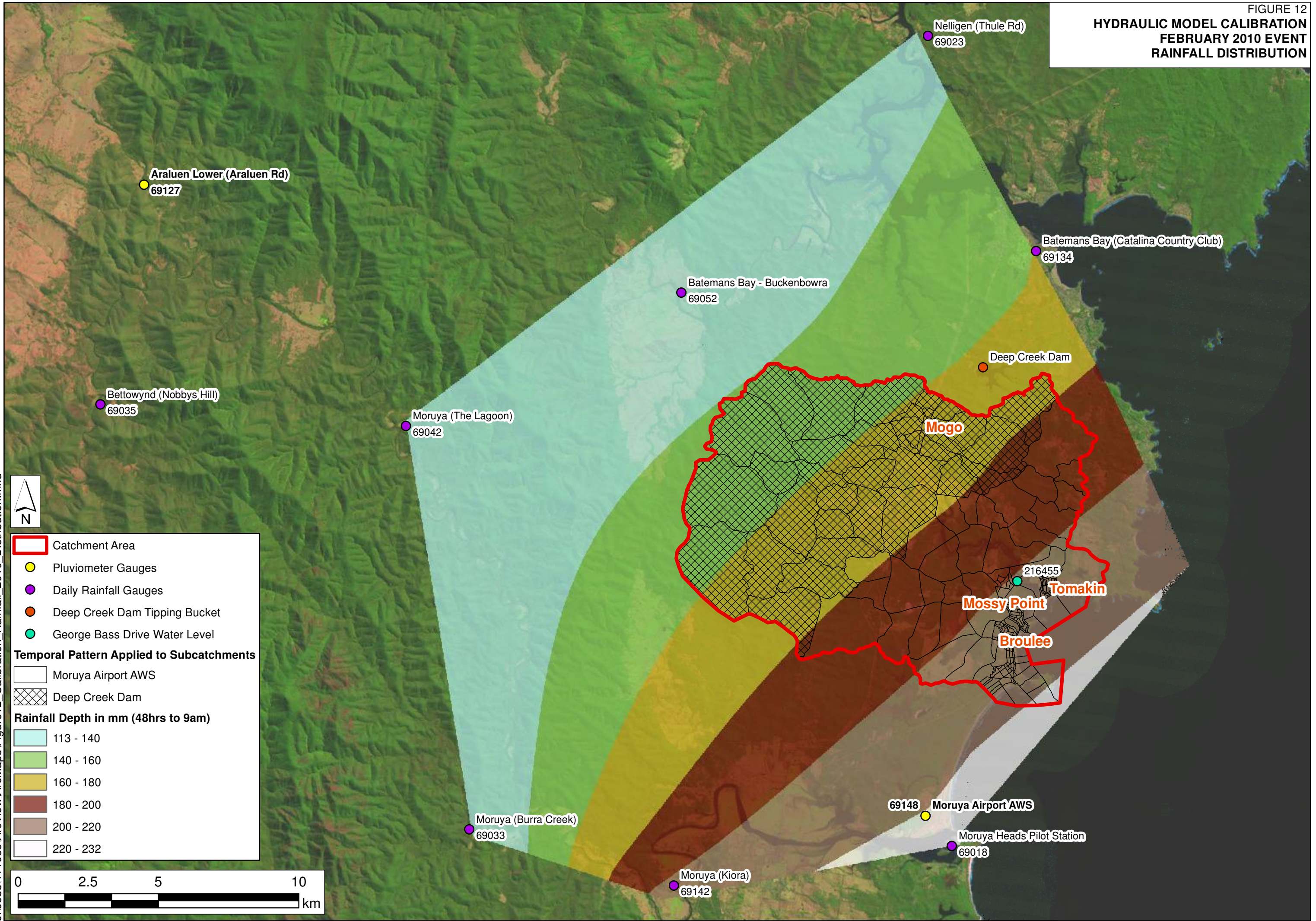


FIGURE 11
HYDRAULIC MODEL CALIBRATION
TIDAL - MAY 2012 EVENT
STAGE HYDROGRAPH

J:\Jobs\114088\TUFLOW\results\B_Hist\Tables\Calibration_Tide_2012.xlsx










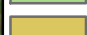





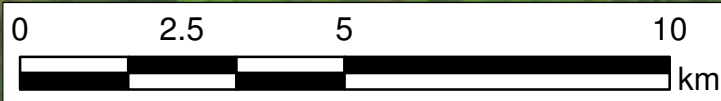
HYDRAULIC MODEL CALIBRATION
FEBRUARY 2010 EVENT
RAINFALL DISTRIBUTION



J:\Jobs\114088\ArcView\ArcMaps\Figure12_Calibration_Rainfall_2010_Distribution.mxd



-  Catchment Area
 -  Pluviometer Gauges
 -  Daily Rainfall Gauges
 -  Deep Creek Dam Tipping Bucket
 -  George Bass Drive Water Level
- Temporal Pattern Applied to Subcatchments**
-  Moruya Airport AWS
 -  Deep Creek Dam
- Rainfall Depth in mm (48hrs to 9am)**
-  113 - 140
 -  140 - 160
 -  160 - 180
 -  180 - 200
 -  200 - 220
 -  220 - 232



**HYDRAULIC MODEL CALIBRATION
RAINFALL - FEBRUARY 2010 EVENT
STAGE HYDROGRAPH**

J:\Jobs\114088\TUFLOW\results\B_Hist\Tables\Calibration_Rainfall_2010.xlsx

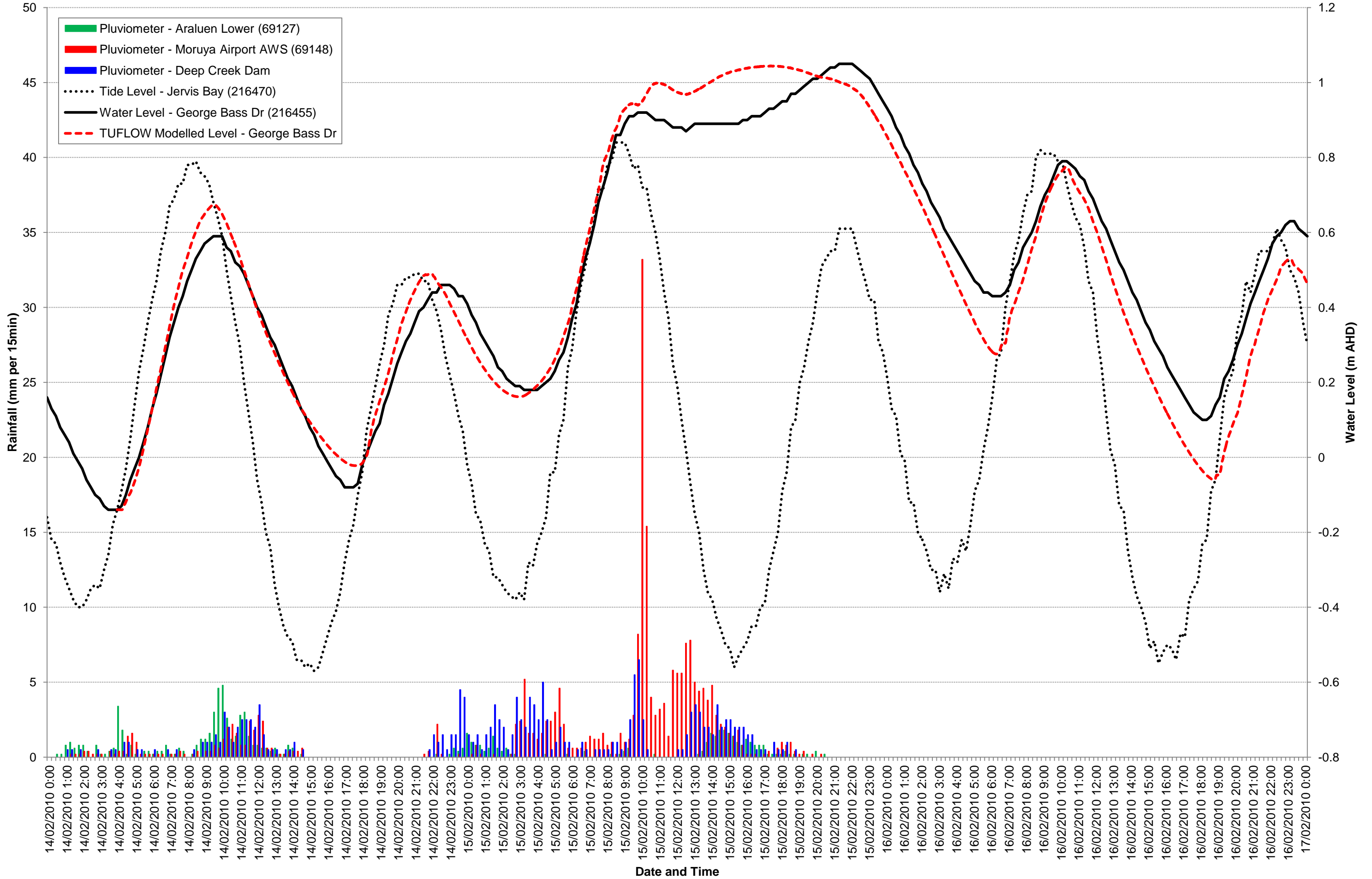


FIGURE 14
 VERIFICATION
 1% AEP EVENT
 PEAK FLOOD DEPTH AND LEVEL CONTOURS

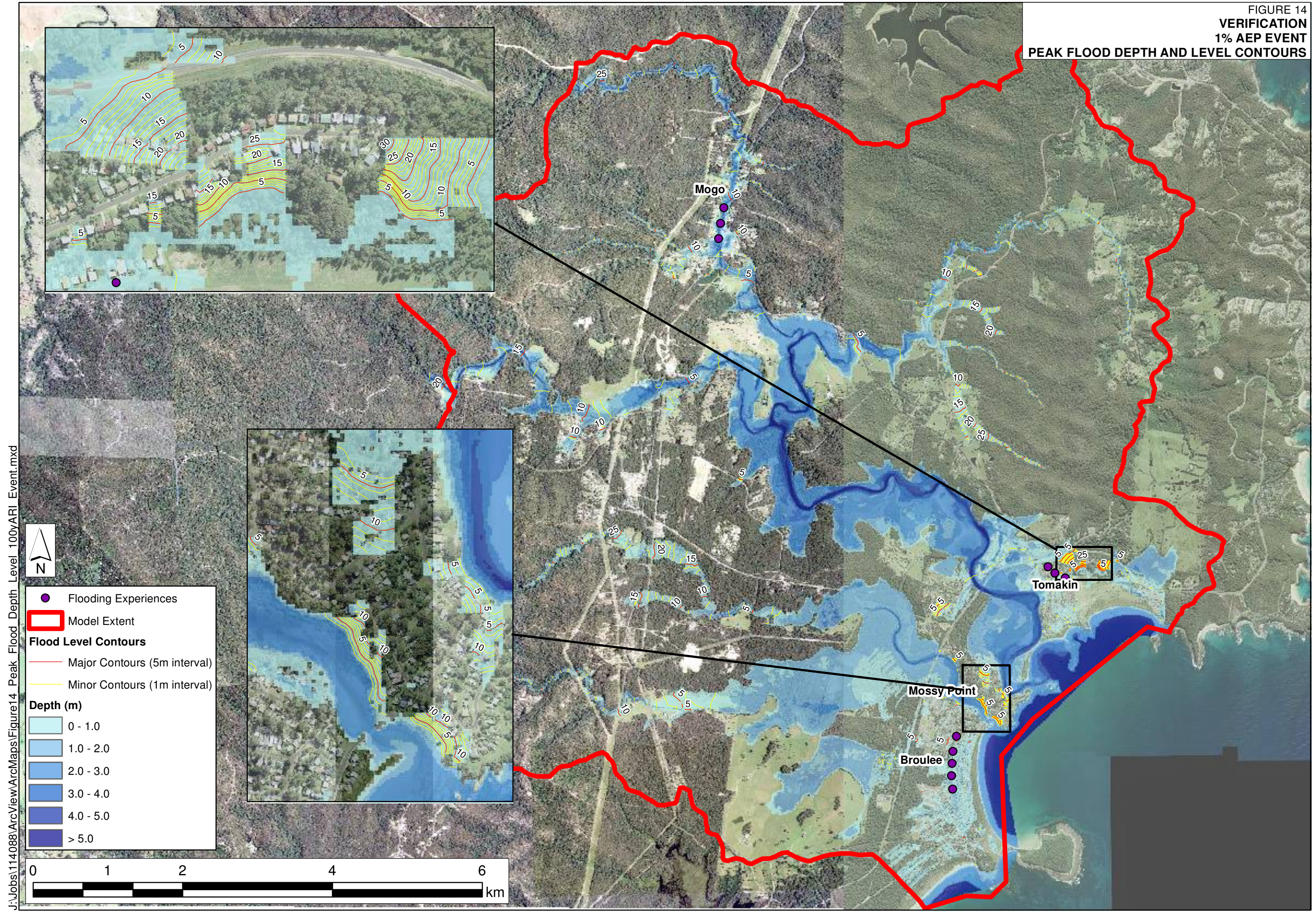


FIGURE 15
RESULTS LAYOUT

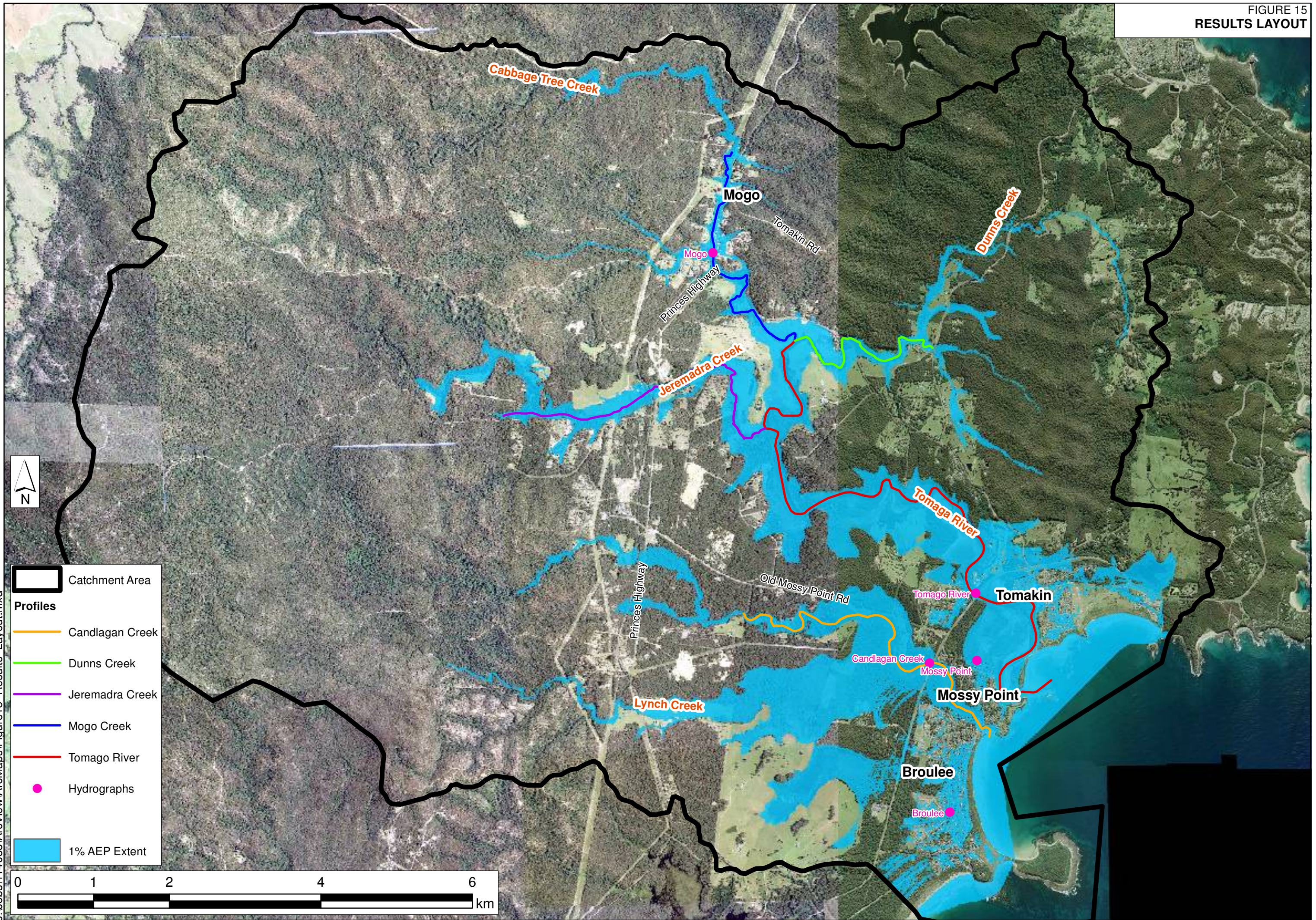


FIGURE 16A
PEAK FLOOD LEVEL PROFILES
CANDLAGAN CREEK

J:\Jobs\114088\TUFLOW\results\ID_Design\Profiles\Profiles_022.xlsx

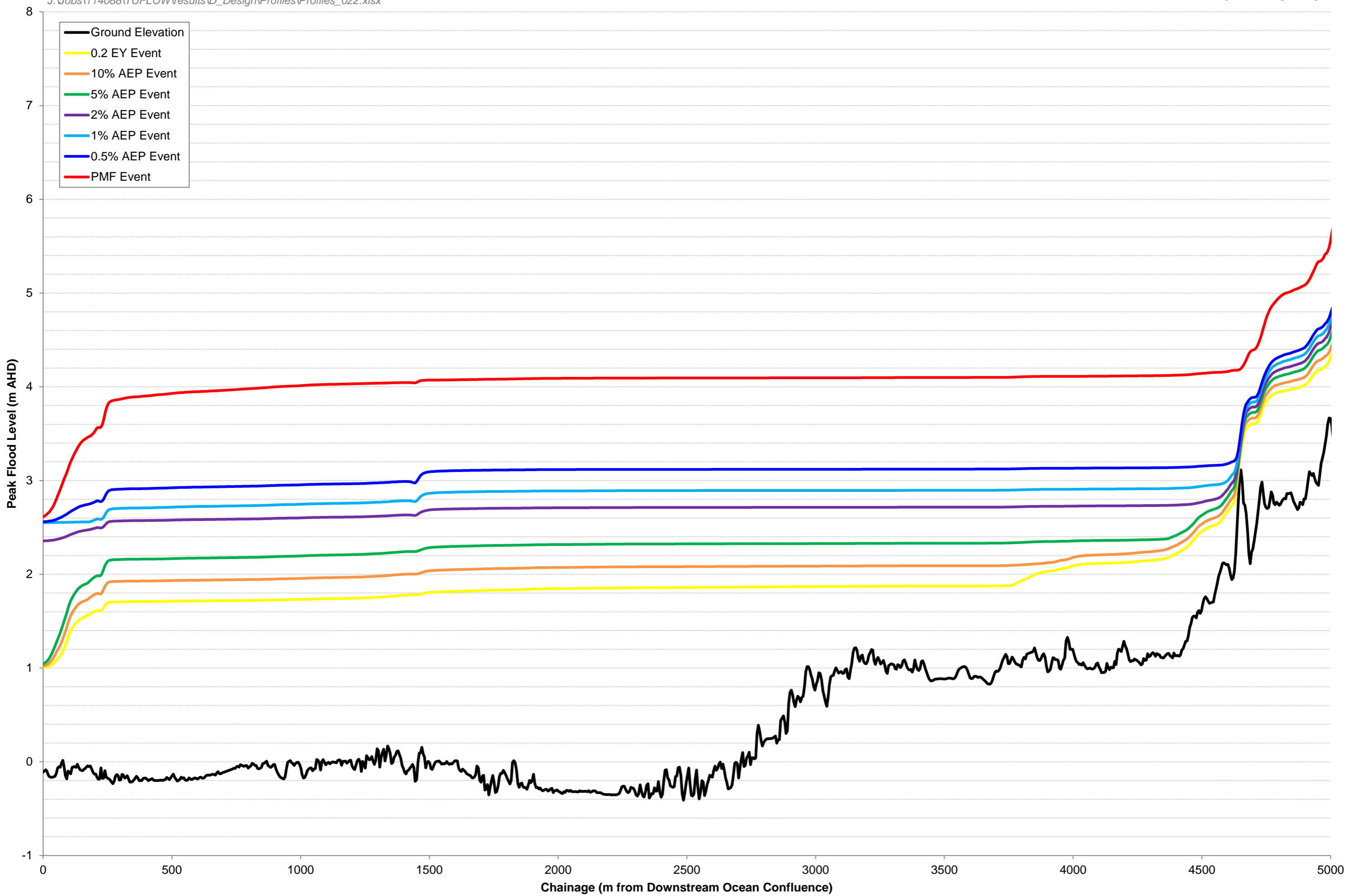


FIGURE 16B
PEAK FLOOD LEVEL PROFILES
TOMAGO RIVER

J:\Jobs\114088\TUFLOWresults\ID_Design\Profiles\Profiles_022.xlsx

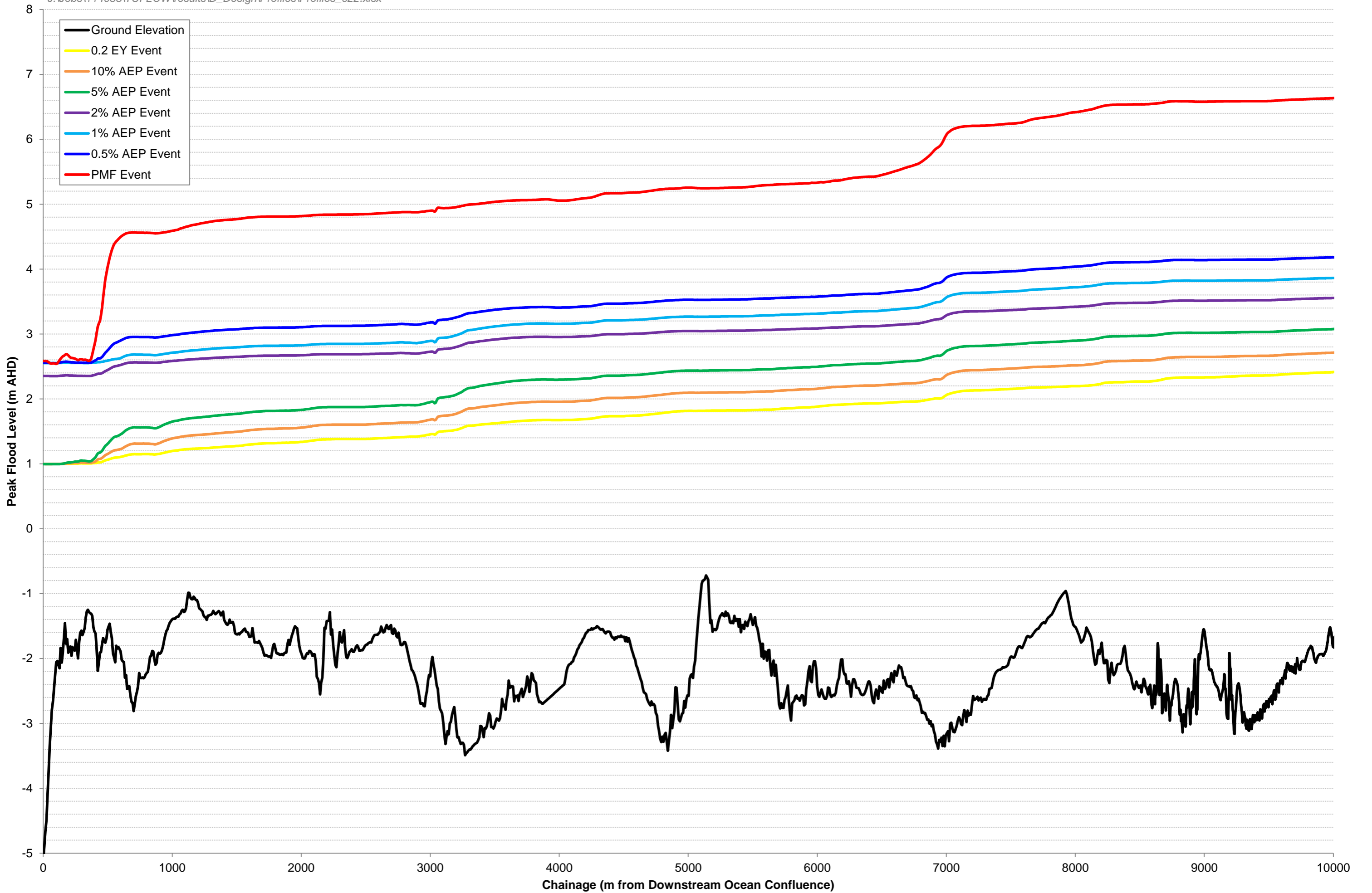


FIGURE 16C
PEAK FLOOD LEVEL PROFILES
JEREMADRA CREEK

J:\Jobs\114088\TUFLOWresults\ID_Design\Profiles\Profiles_022.xlsx

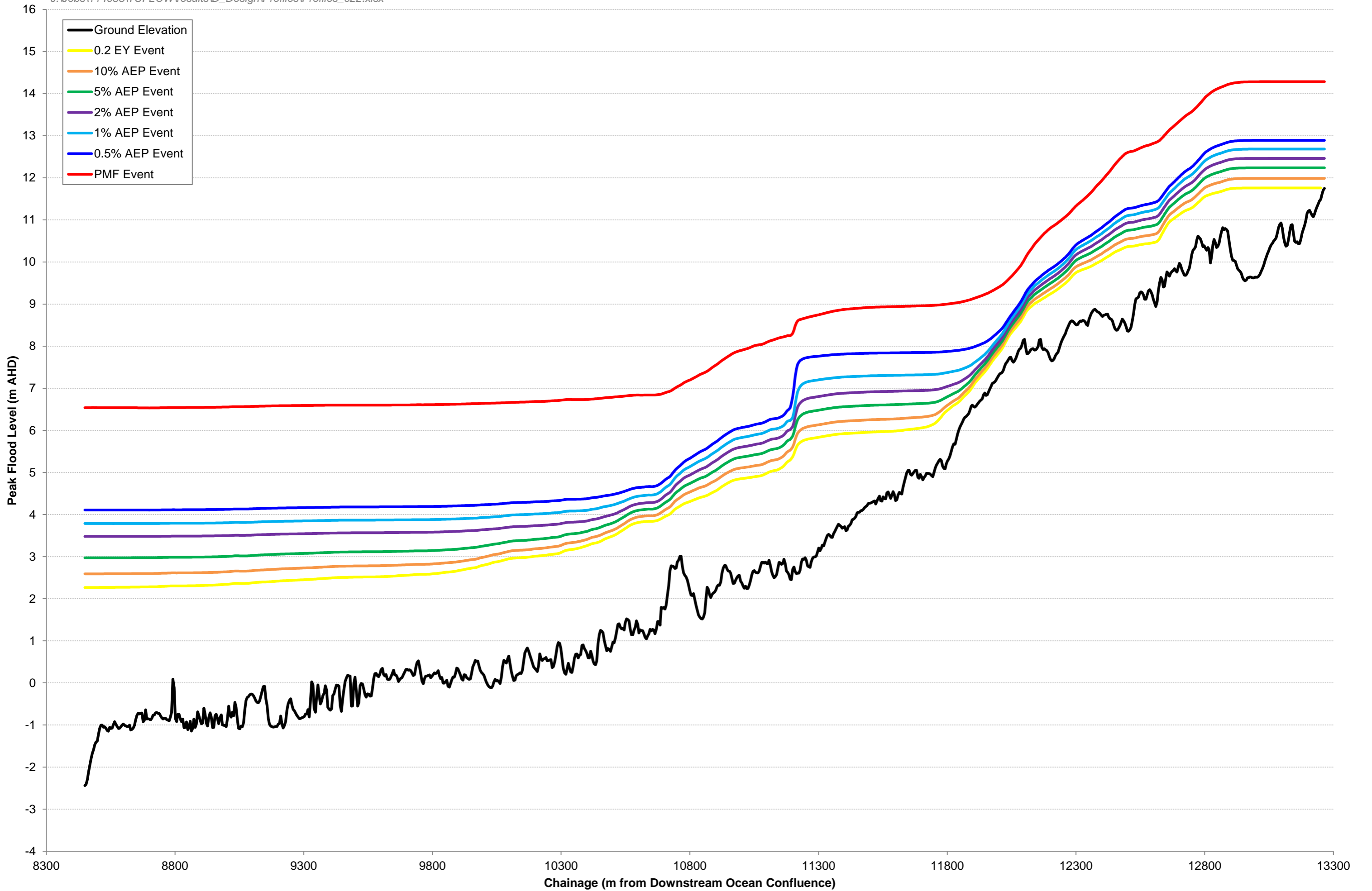


FIGURE 16D
PEAK FLOOD LEVEL PROFILES
MOGO CREEK

J:\Jobs\1114088\TUFLOW\results\ID_Design\Profiles\Profiles_022.xlsx

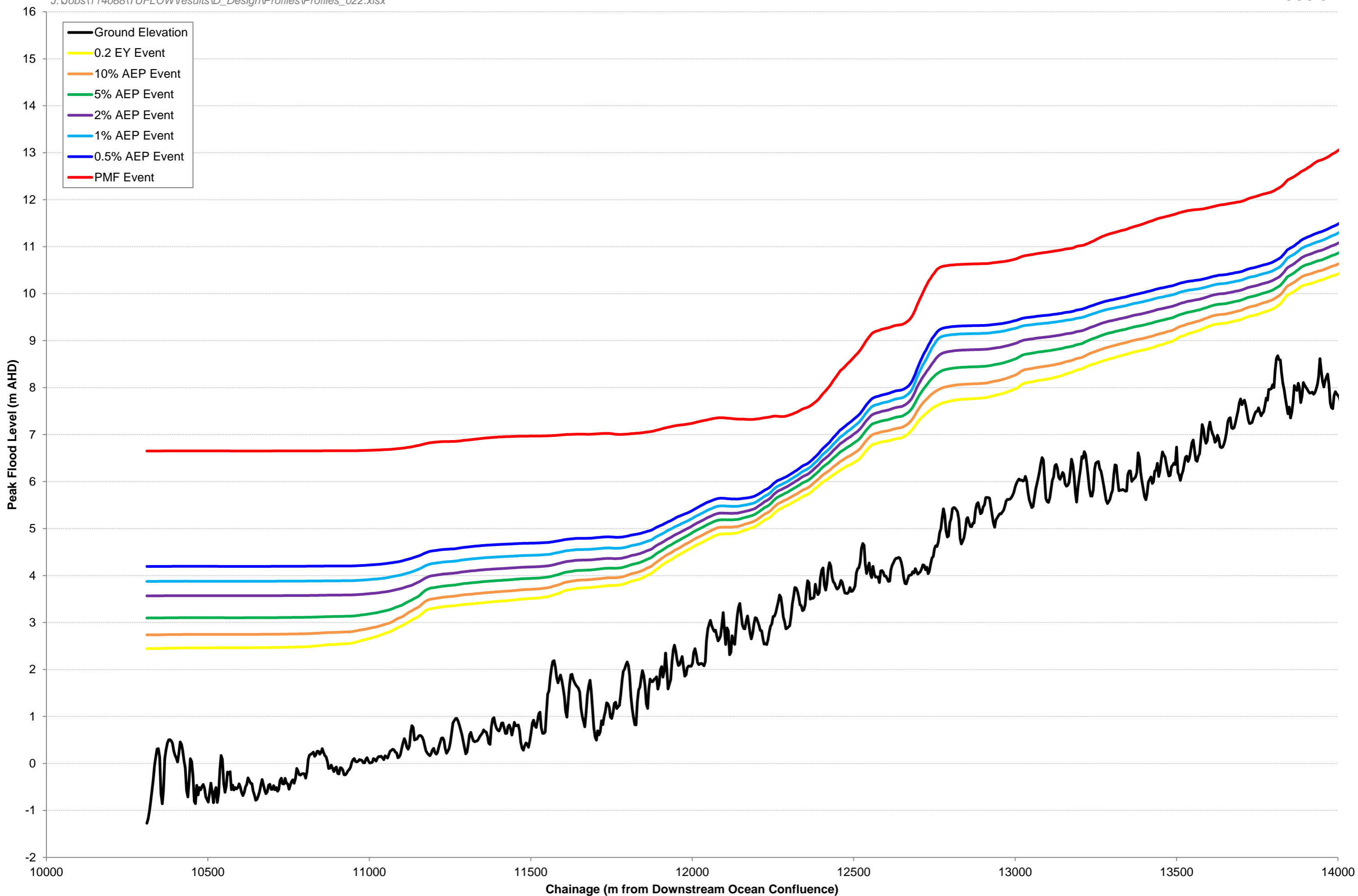


FIGURE 16E
PEAK FLOOD LEVEL PROFILES
DUNNS CREEK

J:\Jobs\114088\TUFLOWresults\ID_Design\Profiles\Profiles_022.xlsx

