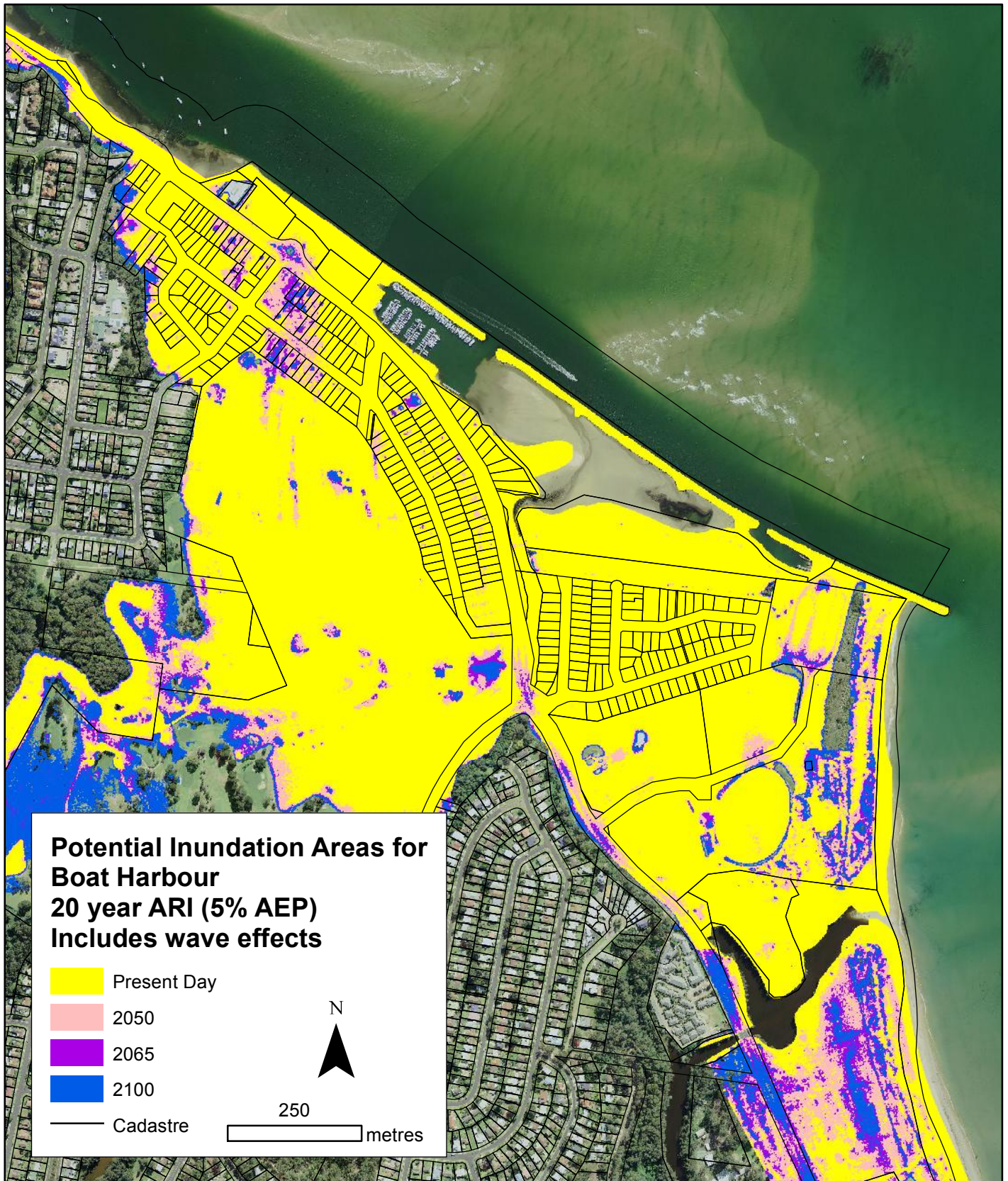


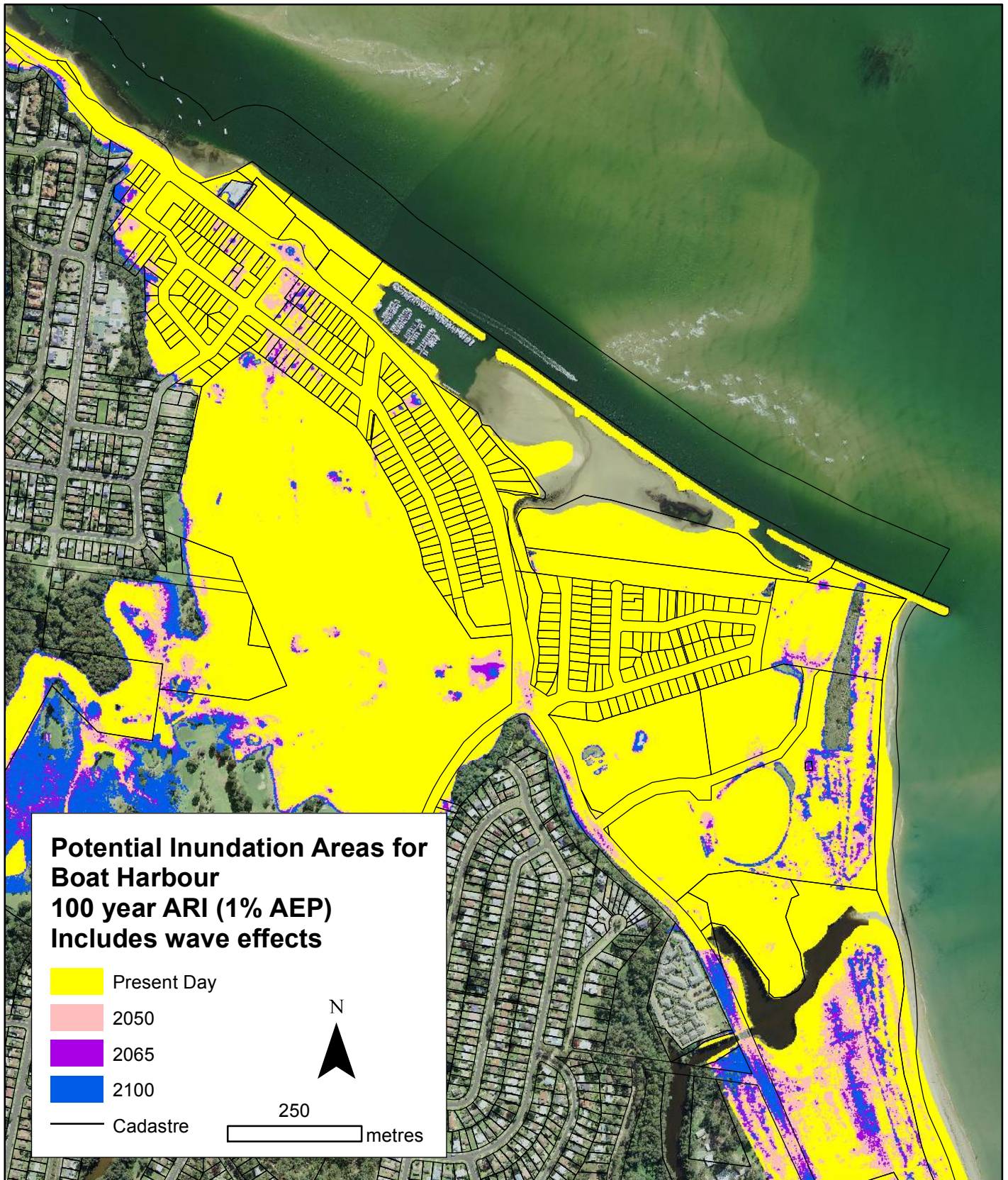
Inundation of the beachface and the area immediately landward of the dune crest is based on the most recent year of LIDAR data available (2005) and is in accordance with ESC's sea level rise policy and planning framework. It does not include allowance for future landward recession of the beach face and assumes that the crest level of the seawall (if present) and the topography remain as they were from the 2005 LIDAR data. By 2050, 2065 or 2100 both of these assumptions may not be valid. Should the seawall/dune be allowed to fail then the landward extent of inundation may increase. Inundation of low lying areas behind the beach is based on the most recent year of LIDAR data available (2005). The low lying inundation areas behind the beach are mapped based on the ground elevation (the "all ground" LIDAR layer) and do not consider flow paths, flow velocities, loss of flow momentum or wave propagation into creek areas. WRL is not responsible for the accuracy of the photogrammetry or LIDAR data. Local surveys by a registered surveyor are recommended to determine local inundation extents.

Figure L.31



Inundation of the beachface and the area immediately landward of the dune crest is based on the most recent year of LIDAR data available (2005) and is in accordance with ESC's sea level rise policy and planning framework. It does not include allowance for future landward recession of the beach face and assumes that the crest level of the seawall (if present) and the topography remain as they were from the 2005 LIDAR data. By 2050, 2065 or 2100 both of these assumptions may not be valid. Should the seawall/dune be allowed to fail then the landward extent of inundation may increase. Inundation of low lying areas behind the beach is based on the most recent year of LIDAR data available (2005). The low lying inundation areas behind the beach are mapped based on the ground elevation (the "all ground" LIDAR layer) and do not consider flow paths, flow velocities, loss of flow momentum or wave propagation into creek areas. WRL is not responsible for the accuracy of the photogrammetry or LIDAR data. Local surveys by a registered surveyor are recommended to determine local inundation extents.

Figure L.32



Inundation of the beachface and the area immediately landward of the dune crest is based on the most recent year of LIDAR data available (2005) and is in accordance with ESC's sea level rise policy and planning framework. It does not include allowance for future landward recession of the beach face and assumes that the crest level of the seawall (if present) and the topography remain as they were from the 2005 LIDAR data. By 2050, 2065 or 2100 both of these assumptions may not be valid. Should the seawall/dune be allowed to fail then the landward extent of inundation may increase. Inundation of low lying areas behind the beach is based on the most recent year of LIDAR data available (2005). The low lying inundation areas behind the beach are mapped based on the ground elevation (the "all ground" LIDAR layer) and do not consider flow paths, flow velocities, loss of flow momentum or wave propagation into creek areas. WRL is not responsible for the accuracy of the photogrammetry or LIDAR data. Local surveys by a registered surveyor are recommended to determine local inundation extents.

Figure L.33